

# Cooperative Approaches to Return Management



## SUDAN RETURNS OPERATIONS

# Operational Context

- Conflict resulted in more than 4 million IDPs and over 500,000 refugees in 7 neighboring countries and beyond
- The Nivesha Peace Process resulted in the signing of the CPA in January 2005
- Within the context of International support to the CPA, repatriation program launched in December 2005



# FRAMEWORK for Inter-agency COOPERATION on Returns

- The Joint Humanitarian Aid Commission and Sudan Relief and Rehabilitation Commission Vision 2008 Policy Framework for the Return of displaced persons in post-conflict Sudan 2004

- UNMIS Mandate – RRR coordination role (Security Council Resolution 1590)

- United Nations Return and Reintegration Policy for Southern Sudan and the Three Areas, October 2006 (*UN Internal document*)

- UNHCR and Agency specific agreements eg: *IOM – UNHCR Annual LOU, UNHCR – WFP Operational Agreements*

*Ground coordination, including with Authorities:*

- Policy Committee on returns

- Steering Committee on returns

- State-level Return Working Groups (regular interaction fora)



# All Returns (IDPs and Refugees)

## 2004 - 2007

Total 3 Protocol / Transition Areas (South Kordofan, Abyei & Blue Nile States)	383,300
Total South Sudan	1,614,700
<b>GRAND TOTAL</b>	<b>1,999,700</b>

## Cumulative **Refugee** return Totals (2005 till date):

Organized and Assisted Self-Repatriation	<b>114,283</b>
Grand Total including Spontaneous Repatriation	<b>280,000</b>

## **Organized Refugee** Yearly returns to South Sudan and Blue Nile State

2006	2007	As of March 2008
<b>20,996</b>	<b>45,795</b>	<b>over 40,000</b> <sup>5</sup>



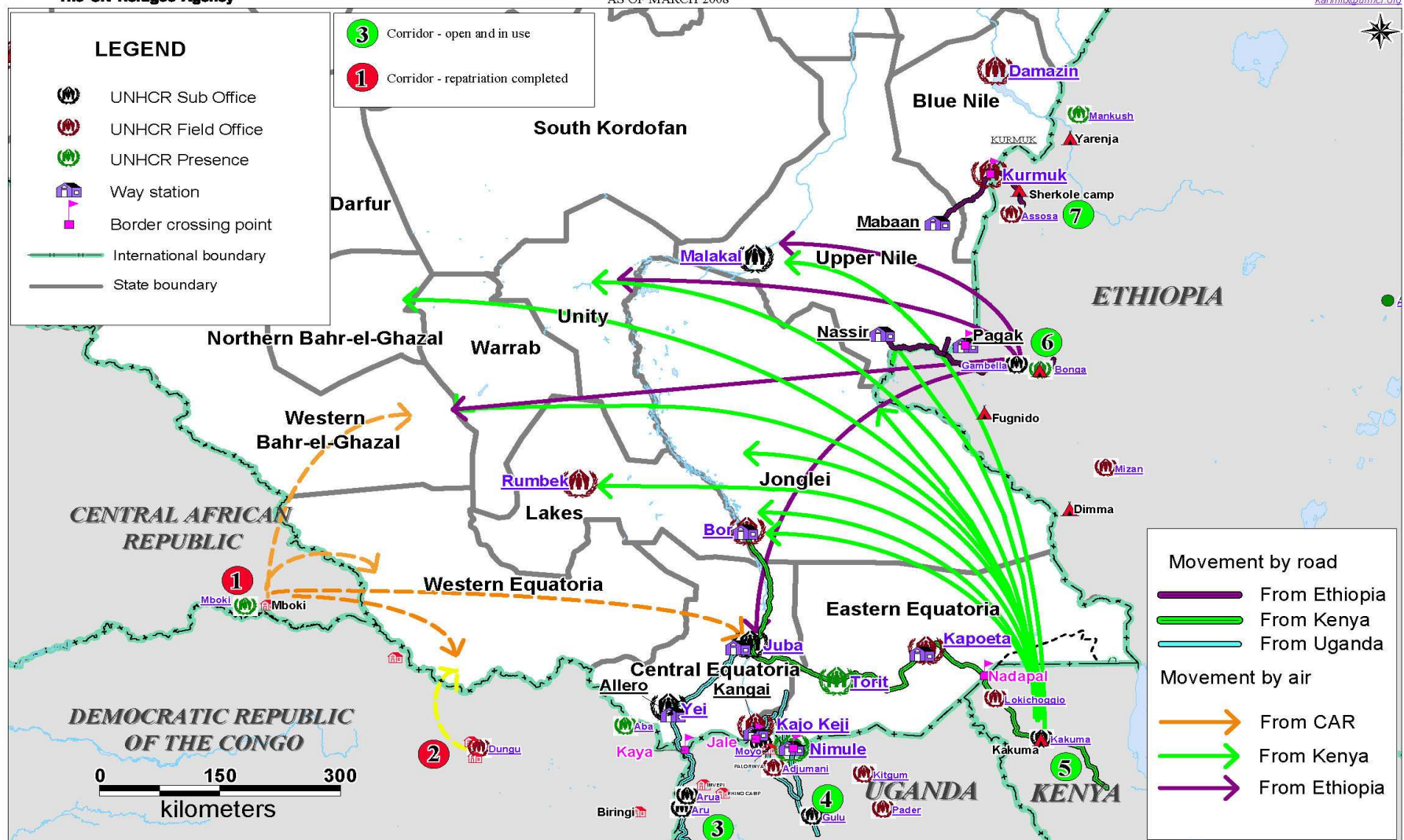
# REPATRIATION CORRIDORS



## SOUTH SUDAN REPATRIATION MAP

UNHCR PRESENCE, BORDER CROSSING POINTS, CORRIDORS AND WAY STATIONS  
AS OF MARCH 2008

Geographic Information Systems  
UNHCR Khartoum, Sudan  
[karimib@unhcr.org](mailto:karimib@unhcr.org)



The boundaries and names shown and the designations used on this map do not imply official endorsement or acceptance by the United Nations.  
Sources: UNHCR, Global Insight digital mapping - © 1998 Europa Technologies Ltd.

Printed 03 March 2008

# IOM - UNHCR Cooperation in **Countries of Asylum:**

- Mobilization of Air and Road Transport Assets
- Organization of cargo & passenger movement
- Pre-departure Medical Screening

# UNHCR & IOM FACILITATING **AIR** RETURNS FROM:

**Ethiopia**  
**1,248 persons**

**Kenya**  
**4,878 persons**

**Democratic Republic of Congo**  
**470 persons**  
*(Returns Completed in  
August 2007)*

**Central African Republic**  
**5,154 persons**  
*(Returns Completed in  
April 2007 )*





# IOM & UNHCR COORDINATING ROAD TRANSPORT



*15,000 refugees returned from Ethiopia to South Sudan and BNS*



*15 Hino Trucks donated by the SSRRC to facilitate repatriation of refugees to South Sudan <sup>9</sup>*

# ONWARD TRANSPORT

*Where UNHCR has no presence, IOM assists  
UNHCR with onward transport to final destinations*



*Refugees dancing on arrival in Yambio, Western Equatoria in 2006*



# Areas for Inter-Agency Collaboration

➤ National policy development and operations planning for return and reintegration of refugees & IDPs	Government (GNU & GoSS), UN and Other Partners.
➤ Transportation (Road and Air)	IOM, BMZ/GTZ, UNHCR
➤ Food and non-food-items	WFP, UNHCR, UNJLC
➤ Livelihood (agricultural – seeds and plants)	FAO
➤ Mine awareness / road clearance	MAG, UNMAO
➤ Basic infrastructure development and Community Based Rehabilitation Projects (CBRPs) – <i>schools, health centers, Teacher's Training Institute, water and sanitation</i>	JICA, UNICEF, BMGF, CIDA, SIDA
➤ Training of police and material support to judiciary	UNDP
➤ Family tracing and reunification	ICRC, UNHCR, UNICEF <sup>11</sup>



# WATER PROJECTS

*Bore-hole constructed through  
Bill & Melinda Gates Foundation*



*Bore-hole in Kuda village, South Sudan*

# Key Achievements

- 280,000 refugees have returned in safety and dignity to date (*organized, assisted self-repatriation and spontaneous returns*)
- Closure of CAR & DRC refugee operations in April and August 2007
- Closure of Yarenja camp in Ethiopia in December 2007
- Continued series of Tripartite Meetings with main asylum countries
- Enhanced involvement of agencies, donors and development actors in reintegration efforts to facilitate community based rehabilitation projects and other sustainable reintegration efforts

## Key Achievements (cont..)

- 51 Health facilities established in areas of return
- 56 Education facilities
- 43 Sanitation facilities
- 254 Water facilities
- Medical supplies delivered to four hospitals, including 5 ambulances
- 3 National NGOs working with UNHCR
- Regular returning monitoring conducted
- Over 600 Village assessment forms entered into database and shared with countries of asylum



## **SUCCESS factors**

- **Good working relationship and close coordination between UNHCR, GoSS, IOM and other interlocutors to repatriate refugees in safety and dignity**
- **Participation of IOM in Tripartite Commission Meetings with countries of asylum and Sudan**
- **Cost-sharing between IOM and UNHCR (50 – 50 basis)**
- **Clear and shared humanitarian vision between agencies**
- **Commitment towards sustainable reintegration**

# CHALLENGES

- Continued limited capacity of GoSS and NGOs
- Funding shortfalls
- Logistical constraints and difficulties to reach remote villages and often impassable areas
- Mines and Security (LRA factor, CPA implementation, localized tensions)
- Absorption capacity in areas of return (land disputes, inadequate basic services)
- Transition from humanitarian assistance to development



***Difficult and impassable road conditions***





*Collapsed bridge hinders repatriation through the Ethiopian corridor (Pagak bridge)*



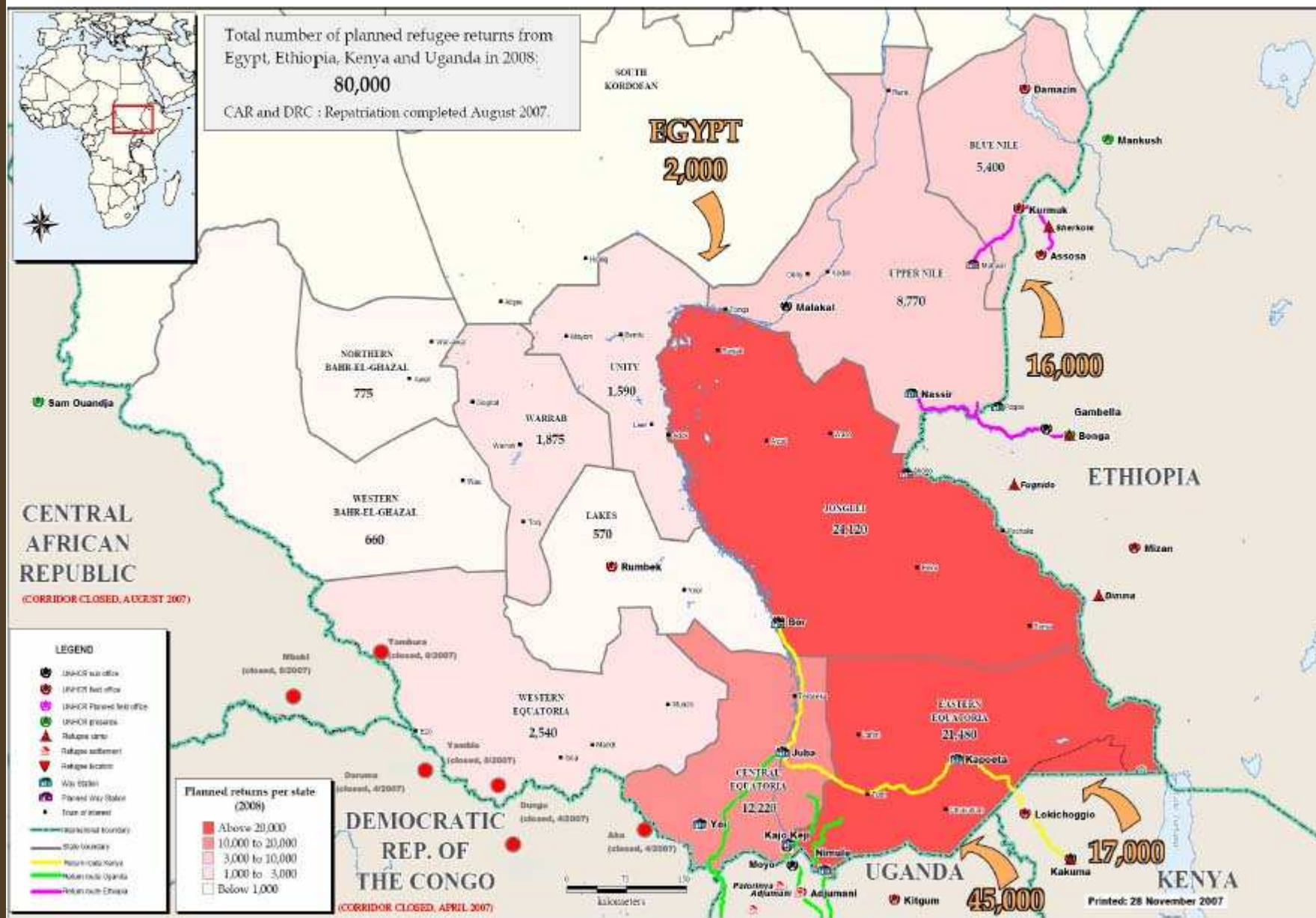


*Demining efforts and Mine Awareness campaigns continue*

# Internally Displaced Persons (IDPs)

- UNHCR is part of the joint efforts of HAC, SSRC, UN and IOM on Framework for voluntary organised IDP returns.
- UNHCR way stations in South Sudan available for IOM organised IDP returnee movements.
- In 2007 joint organised movement of 2,900 IDPs returning within Blue Nile State.
- Early reintegration support has a community approach in which refugees, IDPs and communities are benefiting together.
- Participation and dialogue in inter-agency coordination fora (Protection and Return Working Groups)





# WAY FORWARD

- Continue to strengthen and advocate for multilevel cooperation and coordination between UN agencies, NGOs, Government, Donors, Private Sector and Local Organizations
- Advocate for aligned, reliable and secure donor funding
- Implementation of Protection and other support programs to create conditions that support and augment sustainable returns
- Enhanced capacity building with:
  - National and State authorities in Sudan
  - Civil society, returnees and communities



Sustainable Reintegration: The Shared Vision<sub>23</sub>



**THANK YOU**

Inter-Agency Collaboration and Coordination