



IOM HAITI EARTHQUAKE Displacement Tracking Matrix



Overview

The Displacement Tracking Matrix – DTM – is a multi-sector **tracking system** for rapid and regular assessments of disasters and their impact on victims, particularly in IDP sites, which provides the international community with a **snapshot** of the overall impact and the progress or otherwise of aid efforts. Its a comprehensive, multi-sectoral tracking system which makes it possible to make rapid and regular assessments of the disaster and its impact on victims. The system is being used to **track IDP locations as well as to monitor the humanitarian assistance activities**, and constantly receives information and mapping requests from partners such as MINUSTAH, OCHA, WHO, UNICEF, among others.

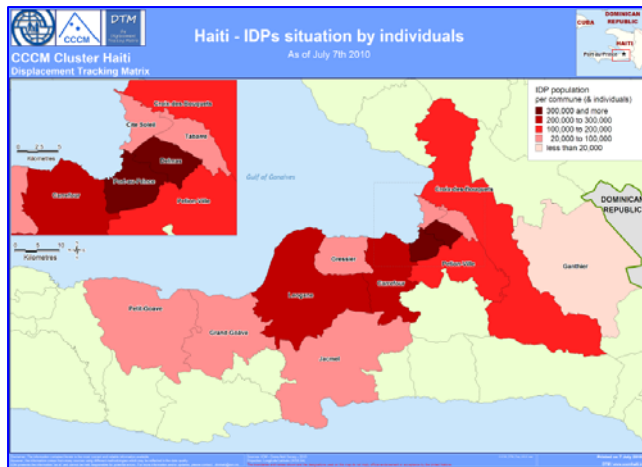
Some of the analysis provided by the DTM:

- Comprehensive geo-referenced list of sites.
- Demographic information and displaced population movement analysis.
- Services provision quality and coverage.
- Presence of aid agencies providing services or as Camp Management Agencies.
- Prevalence of different sorts of phenomena affecting the population at the IDP sites.
- Hazards assessments.
- Gaps analysis.

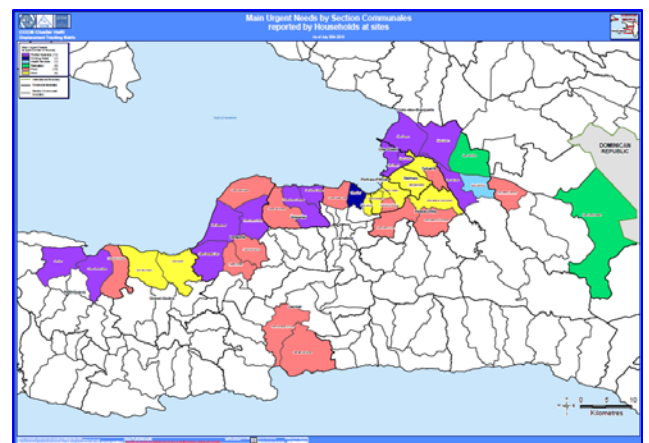
Methodology and sources of information

The DTM data is collected by mobile assessment teams in IDP sites (+/- above 20 families), by applying a survey on either Camp Management Agencies (CMA) present at the sites or the Camp Resident Committees (CRC). The data is collected at a site level, and it usually based on information provided by interviewees. All the DTM data is geo-referenced. A unique SSID number is assigned to each assessed IDP site, and GPS coordinates are recorded to provide accurate identification and location.

DTM Analysis



The DTM provides comprehensive information and analysis on the internally displaced persons (IDP) sites at aggregated, commune, communal section, and IDP site levels.



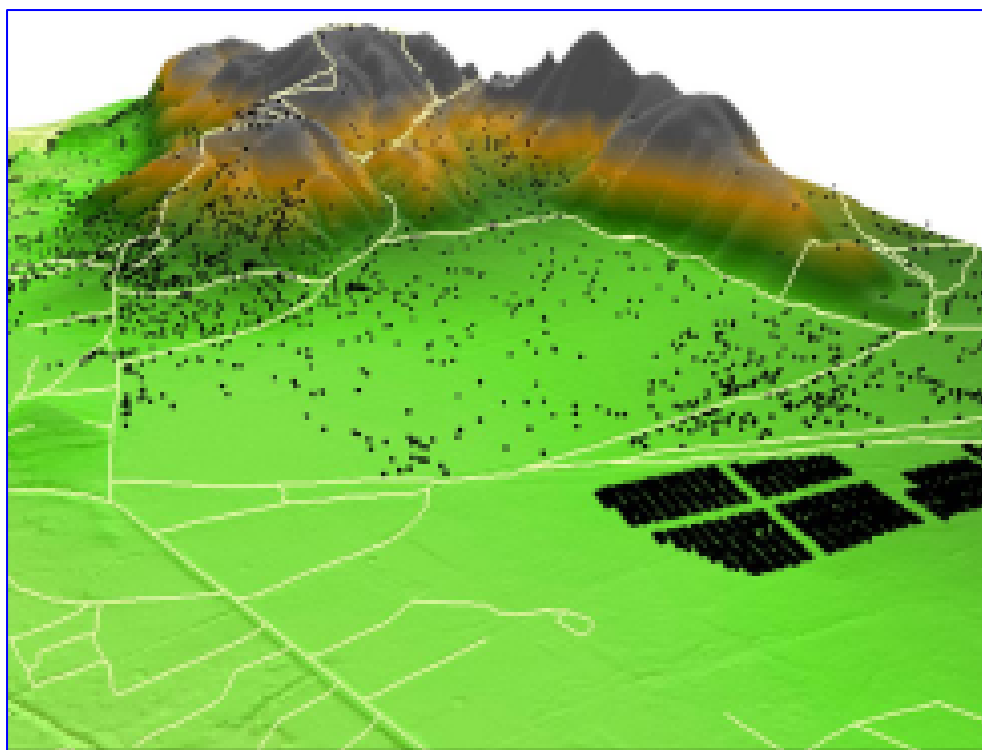
DTM (DISPLACEMENT TRACKING MATRIX)



IOM • OIM

IOM HAITI

Displacement Tracking Matrix



Geographic Information System (GIS) Unit

The GIS Unit provides geo-referenced information, maps and 3D render plots to the CCCM Cluster management, IOM units and the international community in support of their post-earthquake assistance efforts to the Haitian population. The relief community has intensively used these documents for purposes such as donor reporting, hazard assessments (flooding, landslides, etc.), DTM reports, logistics planning and general demographics analysis, among many others.

For more information, please contact:

Mr. Gabriel Mathieu
IOM Haiti
United Nations Logistics Base
Route de l'Aéroport
Port-au-Prince
HAITI
gmathieu@iom.int
+(509) 3701.6196

DTM (DISPLACEMENT TRACKING MATRIX)