



International Migration and Development Initiative (IMDI)

Labour Mobility for Development



Why IMDI?



- Important year for migration
 - High Level Dialogue on International Migration and Development (HLD)
 - Global Migration Group (GMG)
 - Business Advisory Board (BAB)



IMDI Goals



- ✓ Facilitate the matching of labour demand and supply
- ✓ Enhance the positive impact of migration on development
- ✓ Ensure safer, more humane and orderly labour movements

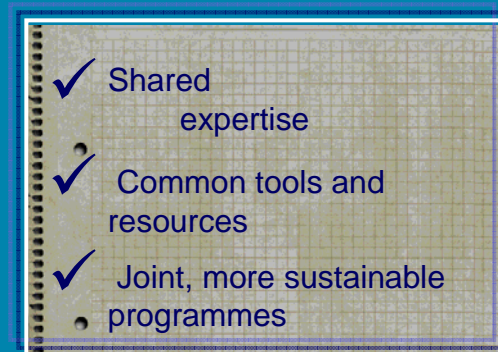
1. Facilitate the matching of labour demand and supply

2. Enhance the positive impact of migration on development

3. Ensure safer, more humane and orderly labour movements



IMDI in brief



- Shared expertise
- Common tools and resources
- Joint, more sustainable programmes



IMDI in brief



- ✓ Voluntary, open alliance of migration & development stakeholders and actors
- ✓ Practical framework for working together on labour migration & development

- Voluntary, open alliance of migration & development stakeholders and actors
- Practical framework for working together on labour migration & development

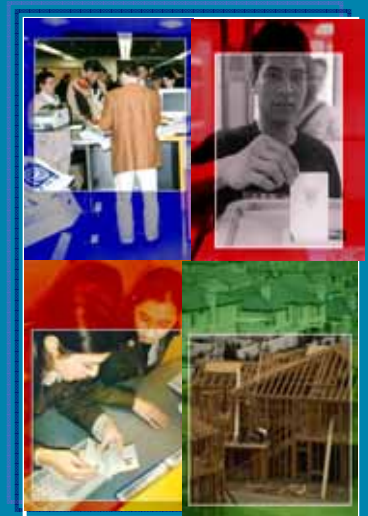




Genesis of IMDI: two sources

1. IOM's own operational experience

- New type of project needed
 - More strategic
 - More sustainable
 - More cross-cutting: demographics, development, trade, human rights
- One-angle approach: considerable limitations





Genesis of IMDI: two sources

2. Initiative of the International Community

- 2003: GCIM to establish framework for coherent, comprehensive and global response to international migration issues
- October 2005 Final Report – Work on means to improve inter-agency cooperation - GMG
- Request from GCIM Commissioners to IOM & WB
 - Work on means to improve inter-agency cooperation
 - Address growing gap between labour supply and demand & human resource development issues from a global perspective
 - IOM initiated consultations with World Bank in early 2006
 - Expanded to include all GMG agencies by mid-2006



The Migration Issue: A Fragmented View



Each entity addressing solely its own field of expertise/mandate

IMDI

Migration

Development

Human
Rights

Demographics

Labour
Migration

Social
Integration

Trade





The Migration Issue: A Fragmented View

IMDI main contributions:



Strengthen link between labour migration
and development

Bring in the private sector



IMDI: a process



- IMDI: broad-scope project
 - Broad alliance of resources & capacities
 - Reflects the complexities of migration
- IMDI work in progress
 - Clear objectives and desired outcomes
 - Inclusive process needs to identify operational modalities



IMDI: immediate & strategic needs



Core objectives & activities

- International Scope
- Jointly defined by IMDI members

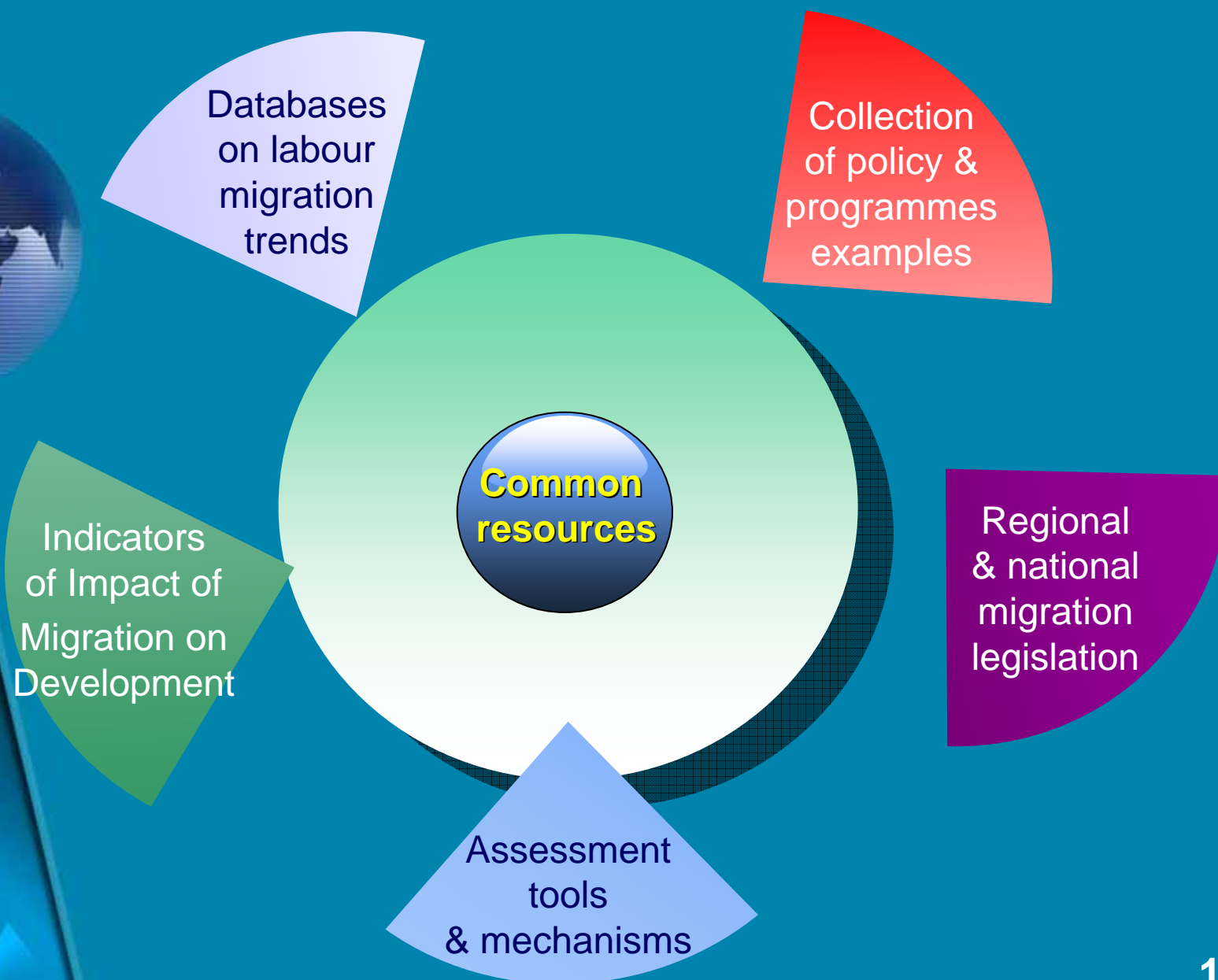
Ad-hoc projects

- Country Specific
- Submitted by Gov. IOs, NGOs or other parties

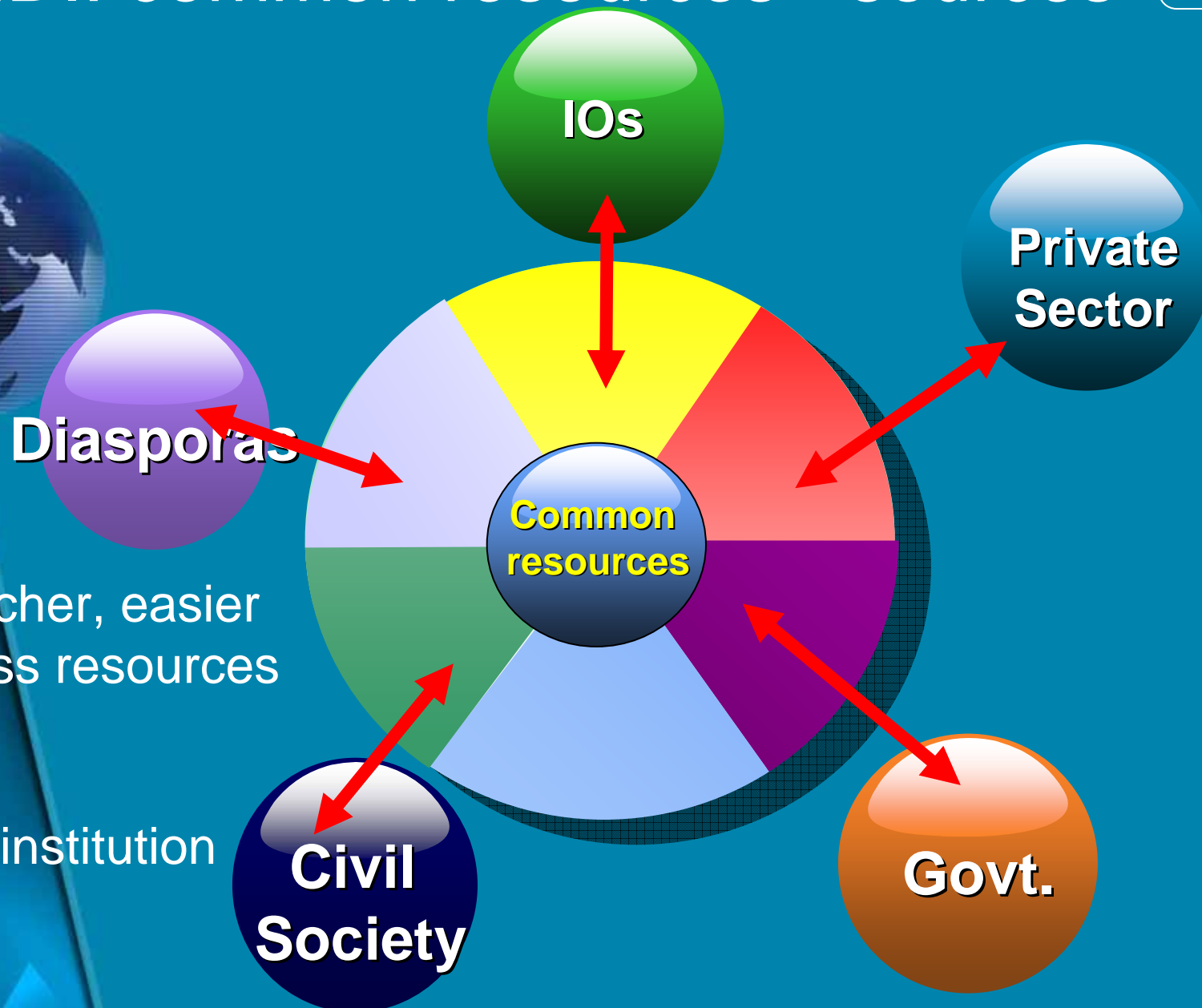
Voluntary contributions by
Governments and private sector



IMDI: common resources - types



IMDI: common resources - sources



Much richer, easier
to access resources
& tools

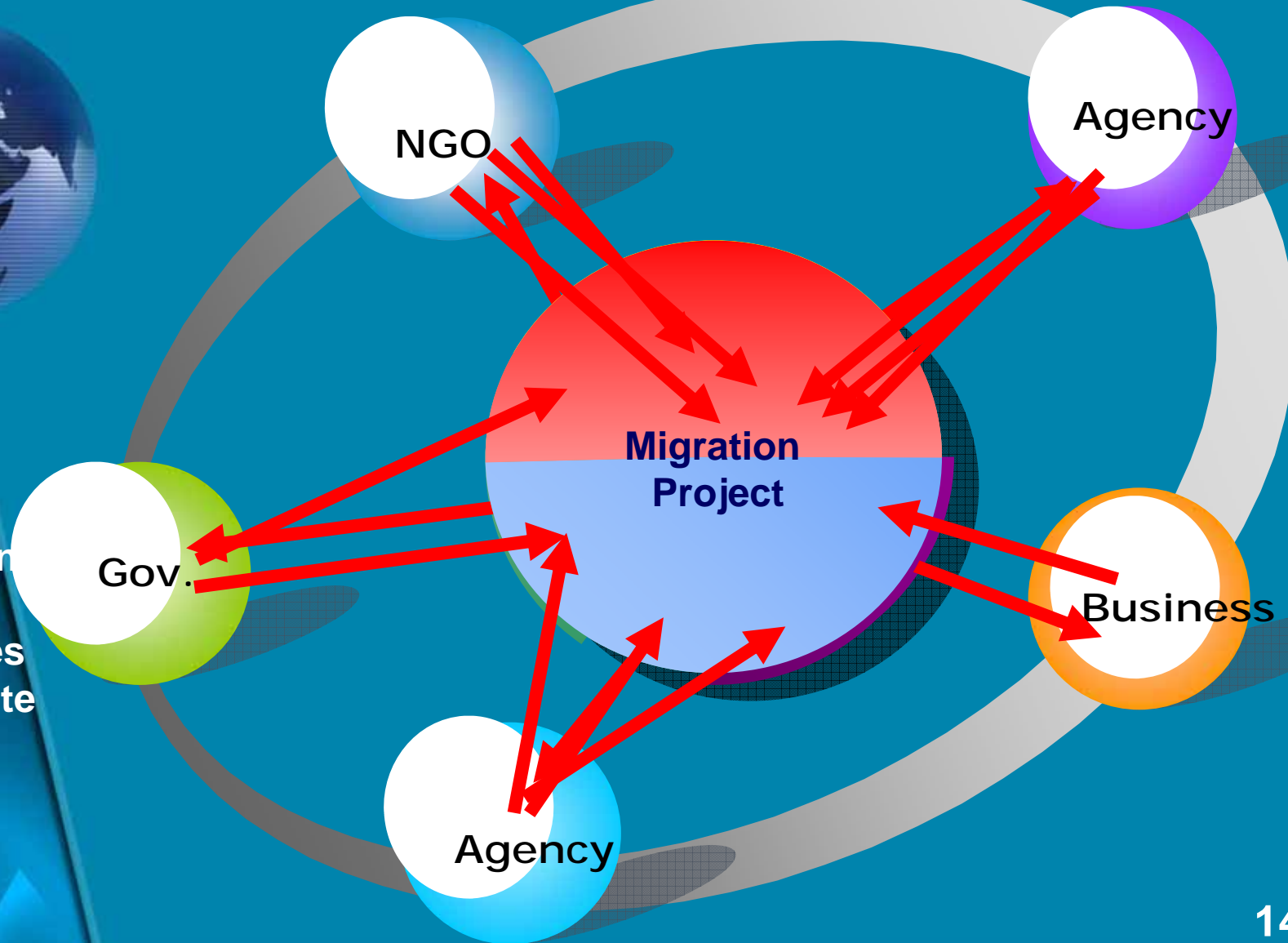
No new institution



IMDI: flexible cooperation structure



Actors coming together in variable geometries to complete a specific task



IMDI in practice: a few examples



1

Immigration legislation & procedures

- Provide information on legislation & procedures applying to labour mobility
 - National, bilateral, regional
- Strengthen the capacity of governments to streamline their legislation & procedures



IMDI in practice: a few examples



2

Capacity building for human resource development & foreign employment

Harness positive & counter negative effects of migration

- Gather information on foreign labour markets of interest to their nationals
- Promote their labour force abroad
- Collect statistics on nationals working abroad: by skills, gender, status in the home country, and occupation in the receiving country
- Support networking between public/private employment & recruitment agencies
- Facilitate mutual recognition of qualifications agreements
- Identify measures for the protection of the rights of migrants



IMDI in practice: a few examples



3 Diaspora Mobilization



- Skills mapping of populations abroad
- Identify key development needs/projects/areas in home countries
- Incentives for encouraging diasporas' contributions
- Government tools to work with diasporas: consular services, communication tools
- Partnerships between home and host countries
- Research on the potential contributions of diasporas to development and poverty reduction



IMDI in practice: a few examples



4

Direct services to governments for the preparation of workers for employment abroad

- Document preparation
- Security checks
- Skills/qualification checks: diploma, language & professional abilities
- Language training
- Cultural orientation: familiarizing with work, educational & social environment
- Medical examinations
- Travel loans



IMDI benefits



- Better-defined, common objectives
- Quicker, wider consultation and sharing of information amongst a broader, more representative circle of stakeholders and actors
- More efficient, needs- and capacity-based co-operation
- One-stop shop for labour migration & development expertise, capacity building & operational resources
- Broader funding base



IMDI benefits



Better documented, more
responsive labour migration &
development policy

More efficient, sustainable
response mechanisms & programmes



IMDI: a momentous tool



- Well grounded in IOM Constitution and expertise
- Reflects broader and more diverse needs and priorities of IOM's growing and more universal membership
- Addresses priority issues of the international community in the migration area



IMDI place in current institutional architecture



- IMDI: first technical assistance and capacity building activity taken up collectively by several GMG members
- Brings in non-governmental stakeholders such as the private sector
- IMDI will be an action-oriented tool that could be used by the Global Forum
 - Not a substitute or competitor to the Forum
- IMDI a means by which the international community can make concrete progress on labour migration and development



IMDI: next steps



- Inter-agency work moving forward constructively
- Further engage private sector
 - BAB has provided its encouragement and support
- Government active engagement needed





International Migration and Development Initiative (IMDI)

Labour Mobility for Development

