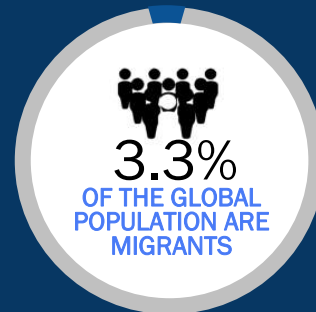
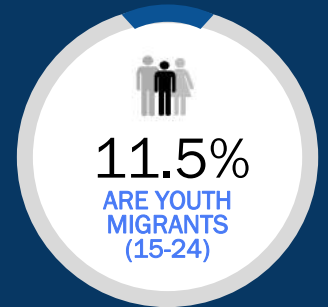
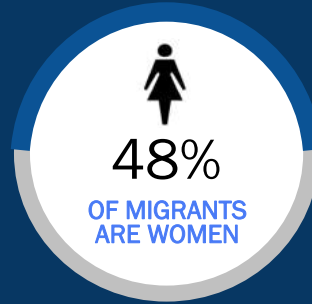
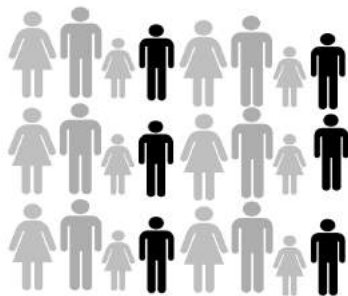


MIGRANTS IN THE WORLD



IMMIGRANTS IN THE SEECA REGION



29.8 MILLION

IMMIGRANTS IN THE REGION



12%
OF WORLD
MIGRANTS



9.8%
ARE YOUTH
IMMIGRANTS

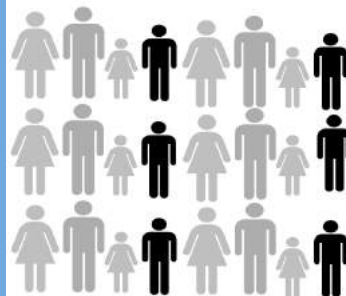


53%
OF IMMIGRANTS
ARE WOMEN



7.6%
OF TOTAL
POPULATION
ARE IMMIGRANTS

EMIGRANTS FROM THE SEECA REGION

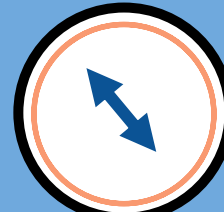


37.2 MILLION

EMIGRANTS FROM THE REGION



15%
OF WORLD
MIGRANTS



63%
MOVE
WITHIN THE
REGION

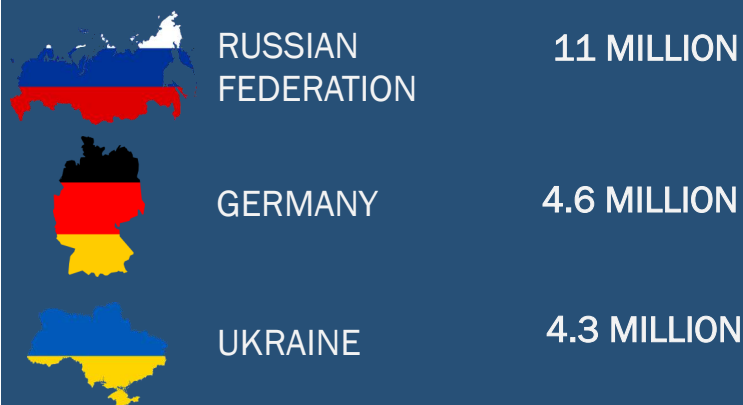


54%
OF EMIGRANTS
ARE WOMEN



9.5%
OF TOTAL
POPULATION
ARE EMIGRANTS

TOP DESTINATION COUNTRIES



TOP COUNTRIES OF ORIGIN



FORCED MIGRATION

REFUGEES IN THE REGION

2.9 MILLION

BY DEC 2015

INTERNALLY DISPLACED BY CONFLICT AND VIOLENCE

3.6 MILLION

BY DEC 2015

REFUGEES FROM THE REGION

562,300

BY DEC 2015



INTERNALLY DISPLACED BY NATURAL DISASTERS (2008-2015)

687,000

REMITTANCES

In April 2016
HIGHEST PRICE REMITTANCE CORRIDOR:
 Switzerland to Serbia (15.2 %)

LOWEST PRICE REMITTANCE CORRIDOR:
 Russia to Armenia, Azerbaijan, and Georgia
 (1.2–1.4 %)

In 2015,
 Remittances accounted for 10% of regional GDP

TOP RECIPIENTS
 Tajikistan, 28.8% of GDP
 Kyrgyzstan, 25.7% of GDP

Notes on data sources:

International migrant stock data sourced from UN DESA (2015), remittances data from World Bank, (July 2016), refugee data from UNHCR Global Trends (June 2016), internal displacement data from IDMC Global Internal Displacement Database (July 2016).

INTERNATIONAL ORGANIZATION FOR MIGRATION (IOM) Regional Office in Vienna

Countries included in SEECA region: Albania, Armenia, Azerbaijan, Belarus, Bosnia and Herzegovina, Georgia, Israel, Kazakhstan, Kosovo*, Kyrgyzstan, FYR Macedonia, Republic of Moldova, Montenegro, Russian Federation, Serbia, Tajikistan, Turkey, Turkmenistan, Ukraine, Uzbekistan.

Contact us: rovienna@iom.int