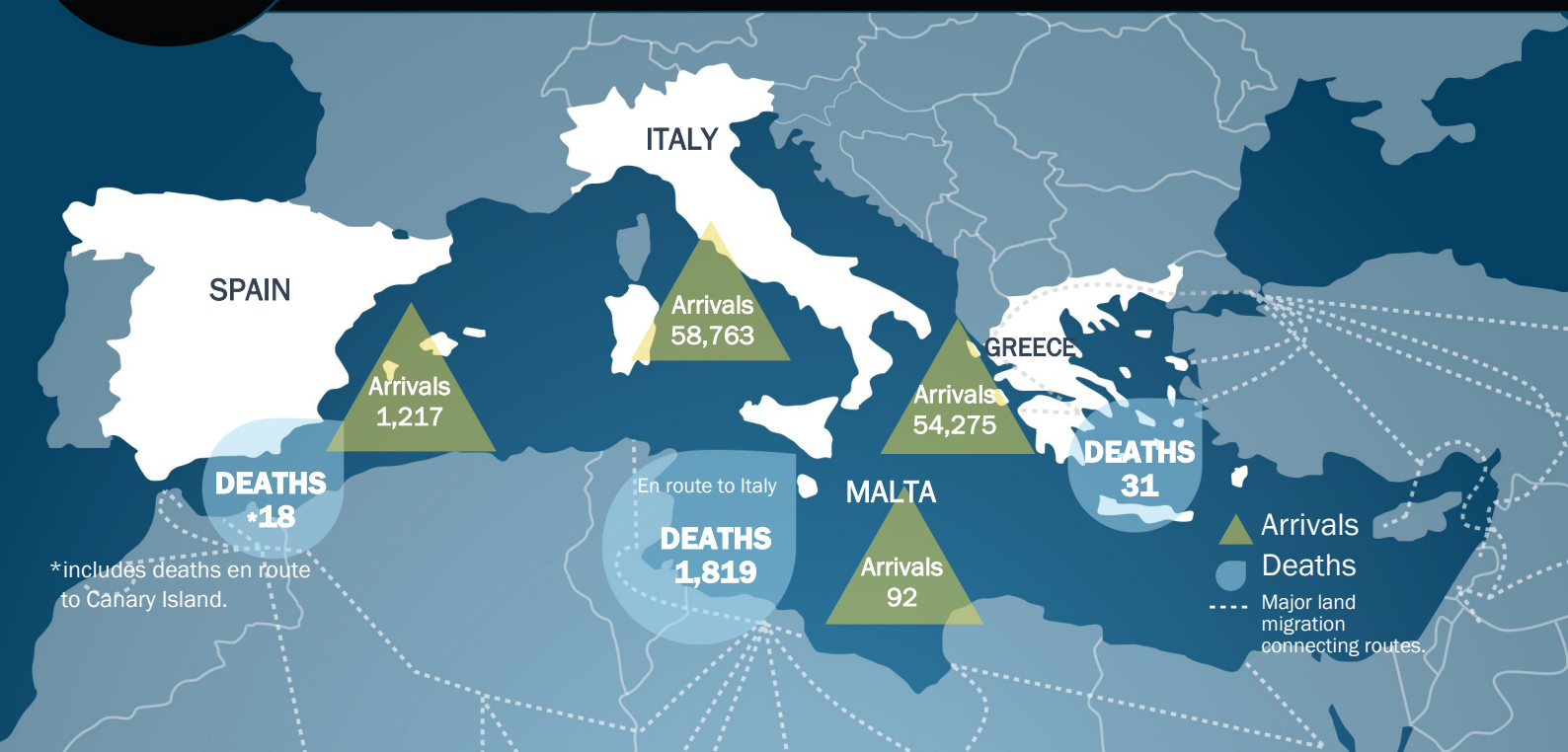


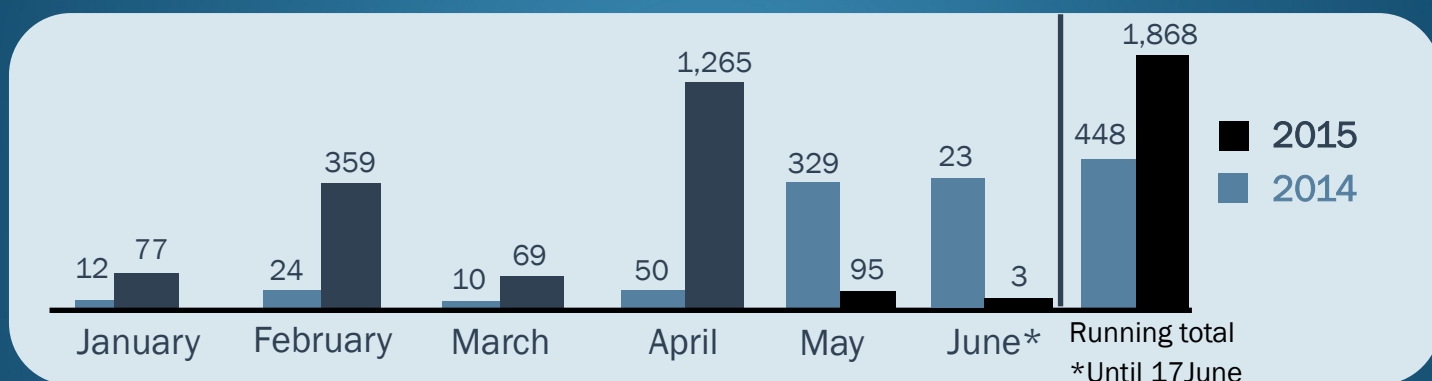


# Mediterranean Update

Missing Migrants Project 17th June 2015



## MIGRANT FATALITIES IN THE MEDITERRANEAN



## MIGRANT ARRIVALS 2015

Total Arrivals: (to date) 106,705

Italy	58,763
Greece	54,275
Malta	92
Spain	1,217
<b>Total</b>	<b>114,347</b>

Estimates based on data from respective governments and IOM field offices as of 17/6/2015. Data for Greece until 16 June.

## TOP FIVE COUNTRIES OF ORIGIN

1 January–31 May 2015

Destination

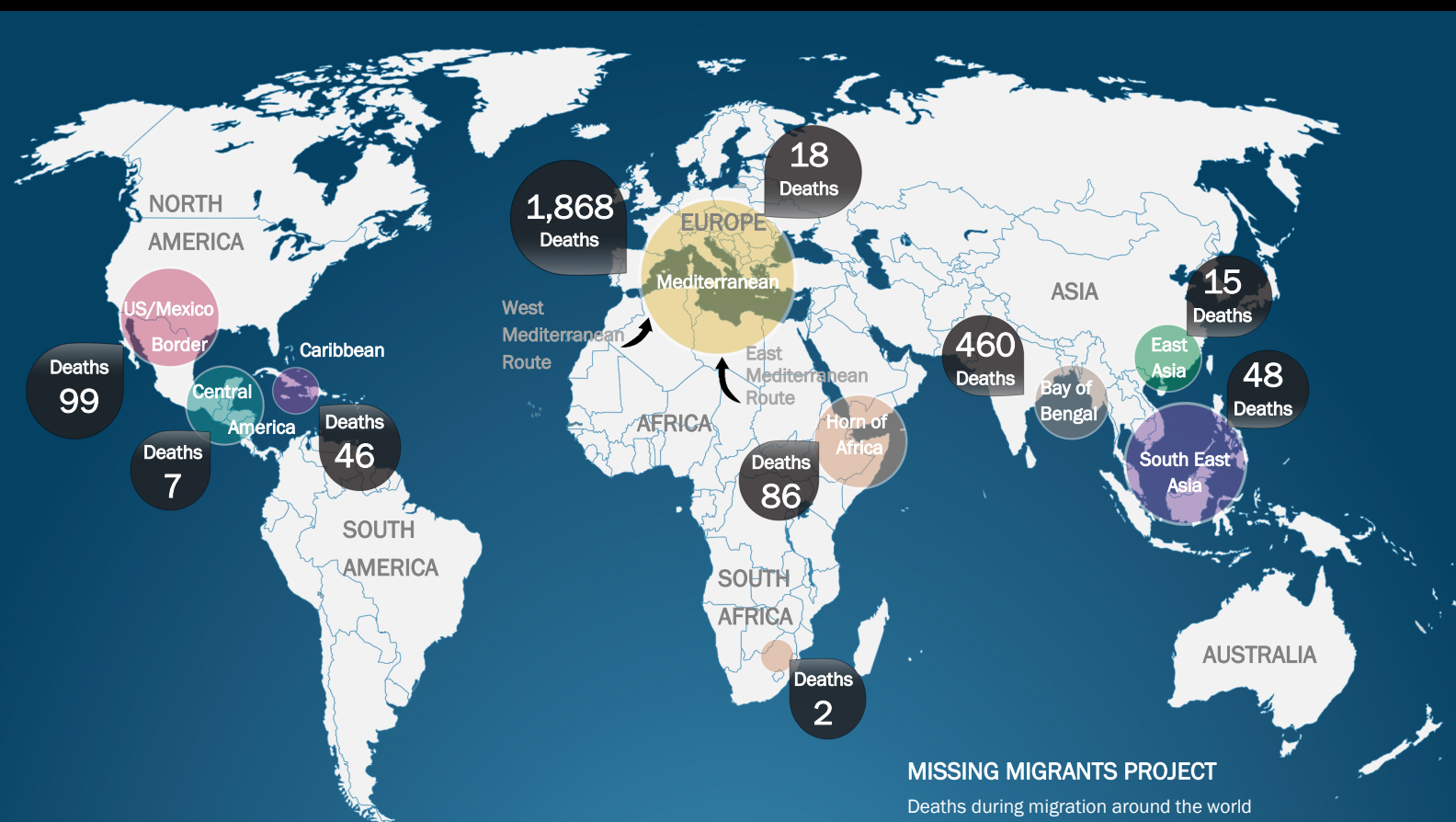
Origin Country	Greece	Italy	Malta	Spain	Total
Syria	22,582	3,185	0	NA..	25,767
Eritrea	219	10,985	0	NA..	11,204
Afghanistan	10,053	62	0	NA..	10,115
Somalia	971	4,958	3	NA..	5,932
Nigeria	269	4,630	0	NA..	4,899

The Missing Migrants Project is a joint initiative of IOM's Migration Research Division (MRD) and Media and Communications Division (MCD).

#MissingMigrants

MissingMigrants.iom.int

# GLOBAL OVERVIEW: OVER 2,600 MIGRANT DEATHS TO DATE IN 2015



## KEY DATA ON MIGRANT FATALITIES

The Missing Migrants Project is the only global database sharing key data on deceased and missing migrants around the world. The aim is to strengthen advocacy and support a more informed policy response.

## SUPPORTING FAMILIES OF MISSING MIGRANTS

The project empowers families of the missing by providing information and guidance, including on identification of the missing and dead, with the aim of affirming the rights and dignity of migrants and their families.

## GLOBAL INFORMATION HUB ON MIGRATION

The project underlines the global scale of the crisis by sharing key information on migrants dying along migratory routes around the world. The platform also enables feedback from migrants and families of the missing.

### Deaths between 1 Jan 2015 – 17 June 2015

Regions	Deaths <sup>a</sup>
Mediterranean	1,868
Bay of Bengal	460
US Mexico Border <sup>b</sup>	99
Horn of Africa	86
Sahara	48
Southeast Asia	48
Caribbean	46
Europe <sup>c</sup>	18
East Asia	15
Central America	7
Southern Africa	2
<b>TOTAL</b>	<b>2,697</b>

#### Legend:

(a) These figures refer only to deaths that have been reported; unknown numbers are not recorded. This map represents only a base minimum.

(b) Data for Tucson Sector and Rio Grande Valley Sector.

(c) Includes deaths in Northern Europe, Southeastern Europe, and Western Europe.

\* Data compiled by IOM's Migration Research Divisions (MRD). All numbers are minimum estimates based on data from respective governments and IOM field offices as of 17/6/2015.

The Missing Migrants Project is a joint initiative of IOM's Migration Research Division (MRD) and Media and Communications Division (MCD).

**#MissingMigrants**

**MissingMigrants.iom.int**