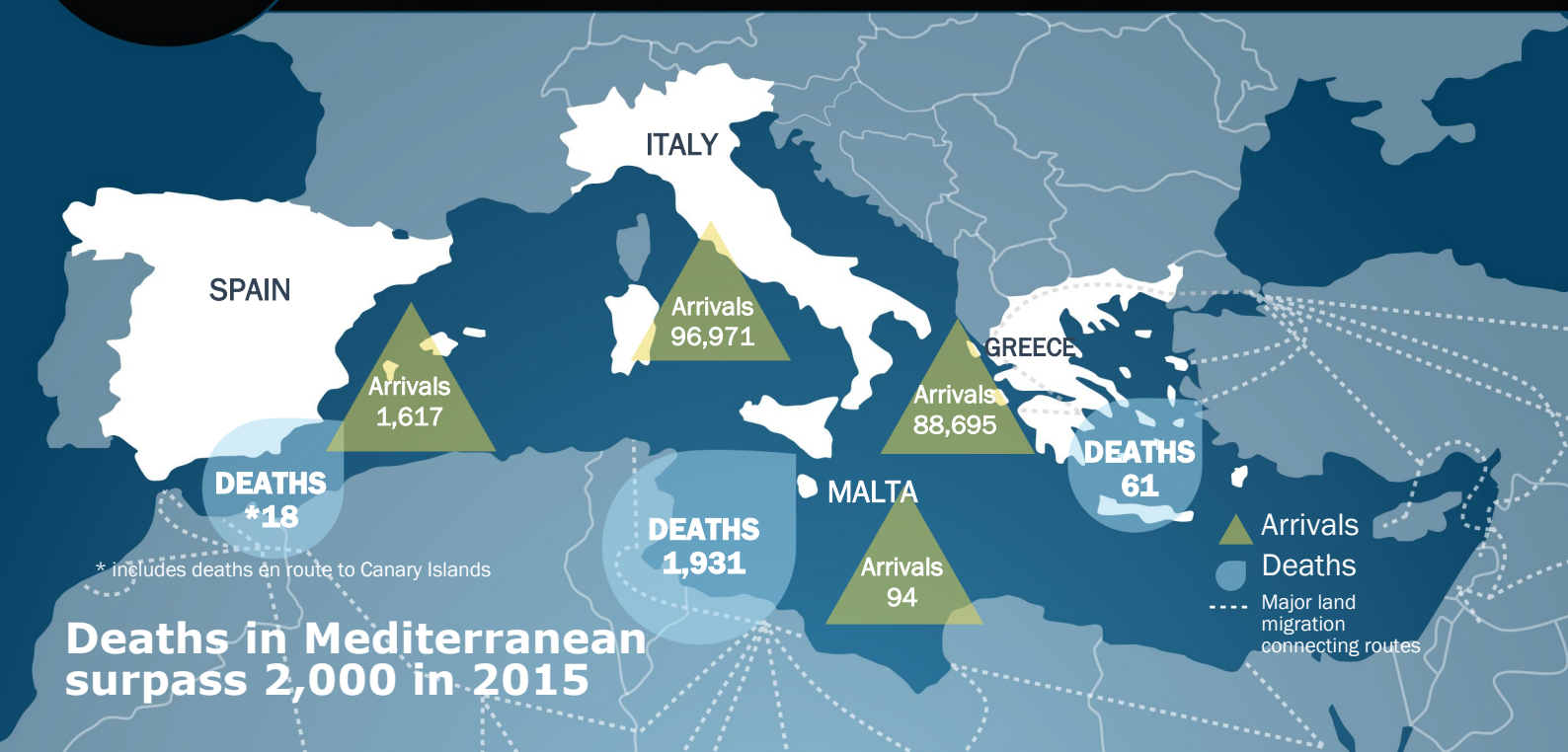




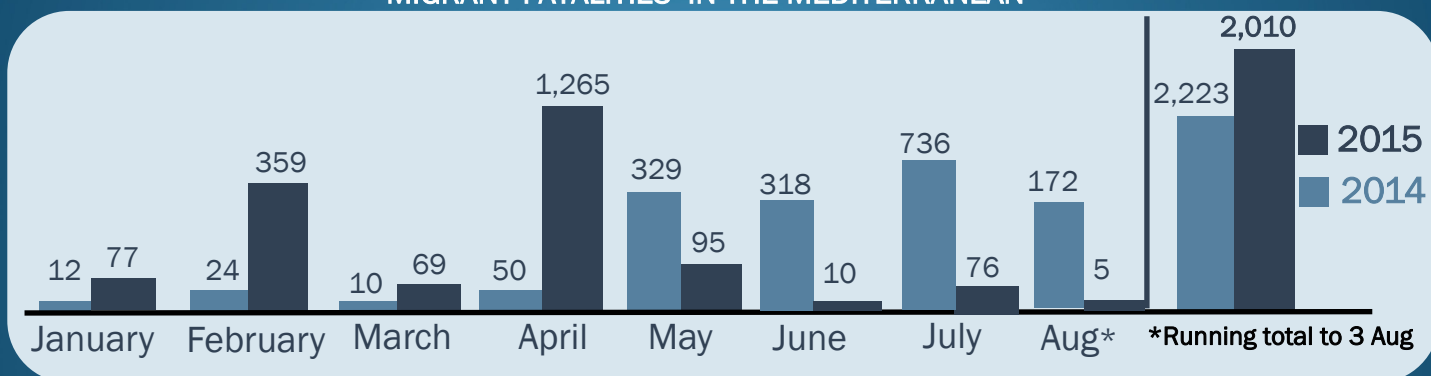
Mediterranean Update

Missing Migrants Project 3 August 2015



*Arrivals figures refer to irregular maritime arrivals only

MIGRANT FATALITIES IN THE MEDITERRANEAN



MIGRANT MARITIME ARRIVALS 2015

Total Arrivals: (to date) 187,377

Italy	96,971
Greece	88,695
Spain	1,617
Malta	94
Total	187,377

Estimates based on data from respective governments and IOM field offices as of 3/8/2015. Data for Greece until 28 July.

TOP FIVE COUNTRIES OF ORIGIN

1 January–30 June 2015

Destination

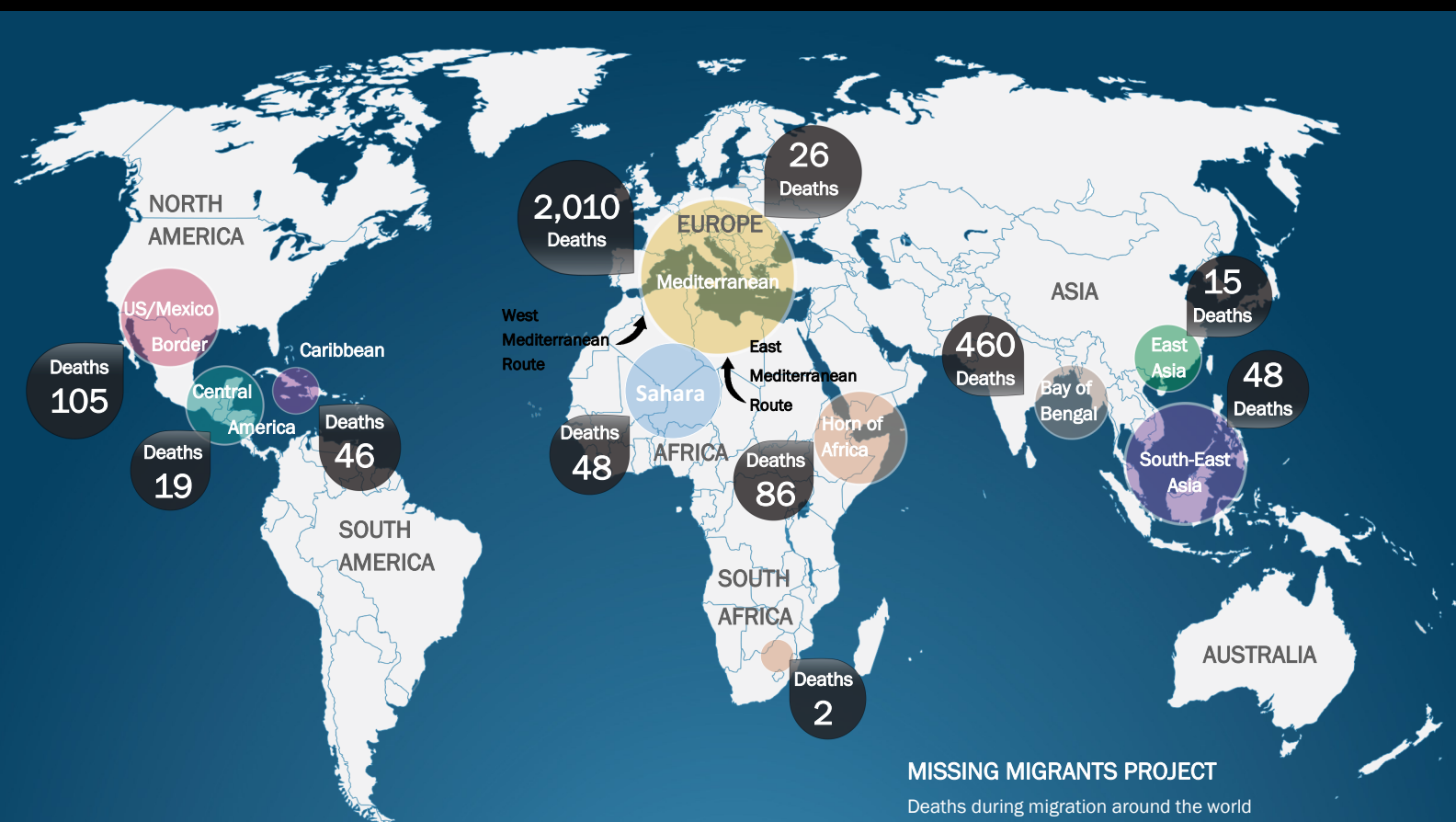
Origin Country	Greece	Italy	Malta	Spain	Total
Syria	40,420	4,271	0	n.a.	44,691
Eritrea	282	18,676	0	n.a.	18,958
Afghanistan	18,342	0	0	n.a.	18,342
Nigeria	341	7,897	3	n.a.	8,238
Somalia	1254	6,344	0	0	7,601

The Missing Migrants Project is a joint initiative of IOM's Migration Research Division (MRD) and Media and Communications Division (MCD).

#MissingMigrants

MissingMigrants.iom.int

GLOBAL OVERVIEW: 2,865 MIGRANT DEATHS TO DATE IN 2015



KEY DATA ON MIGRANT FATALITIES

The Missing Migrants Project is the only global database sharing key data on deceased and missing migrants around the world. The aim is to strengthen advocacy and support a more informed policy response.

SUPPORTING FAMILIES OF MISSING MIGRANTS

The project empowers families of the missing by providing information and guidance, including on identification of the missing and dead, with the aim of affirming the rights and dignity of migrants and their families.

GLOBAL INFORMATION HUB ON MIGRATION

The project underlines the global scale of the crisis by sharing key information on migrants dying along migratory routes around the world. The platform also enables feedback from migrants and families of the missing.

Deaths between 1 Jan 2015 – 3 Aug 2015

Regions	Deaths ^a
Mediterranean	2,010
Bay of Bengal	460
US/Mexico Border	105
Horn of Africa	86
Sahara	48
South-East Asia	48
Caribbean	46
Europe ^b	26
East Asia	15
Central America	19
Southern Africa	2
TOTAL	2,865

Legend:

(a) Figures refer to deaths that have been reported; unknown numbers are not recorded. This map represents only a base minimum.

(b) Includes deaths in Northern Europe, Southeastern Europe, and Western Europe.

* Data compiled by IOM's Migration Research Division (MRD). All numbers are minimum estimates based on data from respective governments and IOM field offices as of 3/8/2015.

The Missing Migrants Project is a joint initiative of IOM's Migration Research Division (MRD) and Media and Communications Division (MCD).

#MissingMigrants

MissingMigrants.iom.int