



IOM Migration Crisis Operational Framework

Part I: Different Crises, Different Patterns of Mobility

Louis Hoffmann



**CSO Consultations
Geneva, 25 October 2012**

Libya

before the crisis

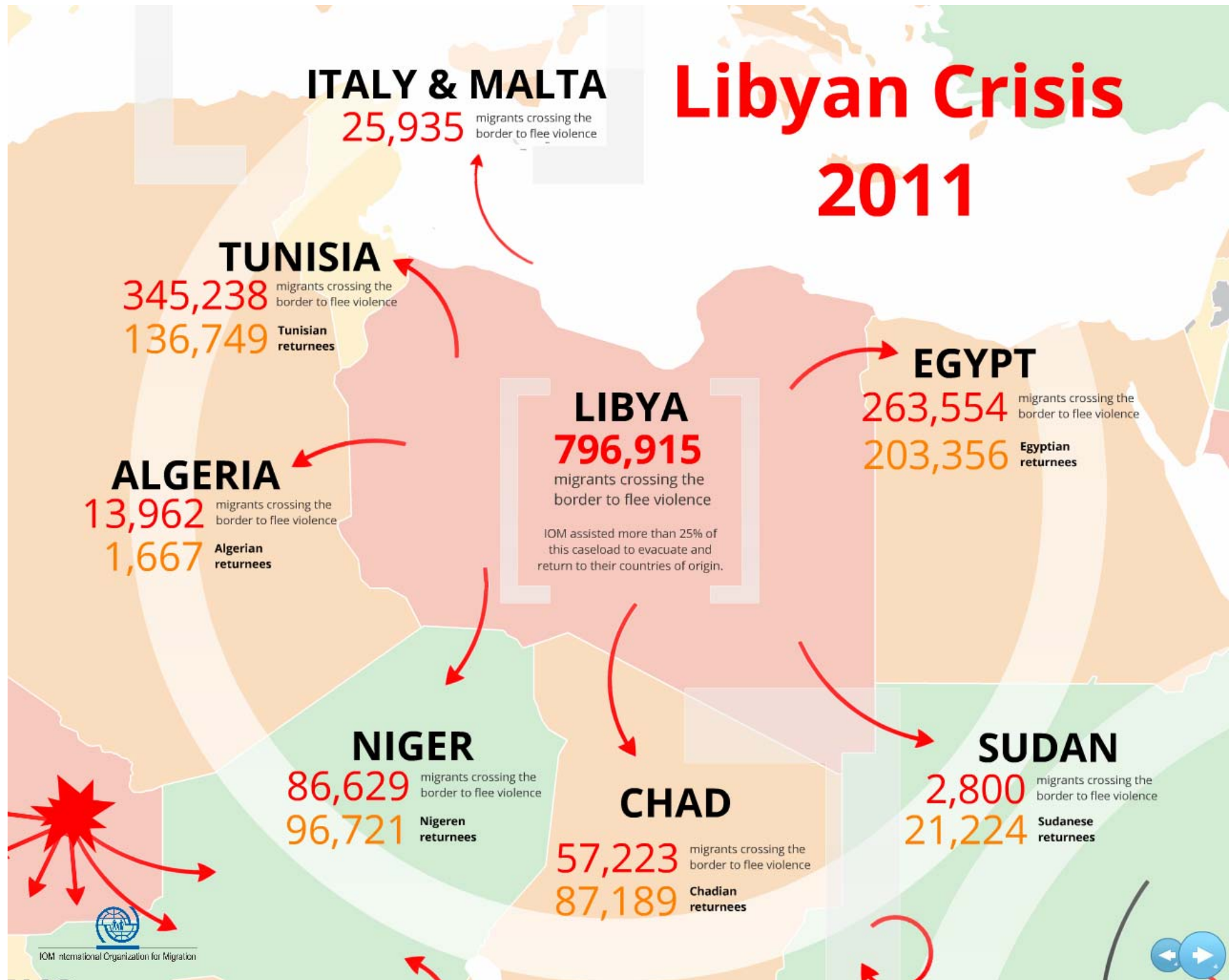
economy heavily dependent on migrant workers

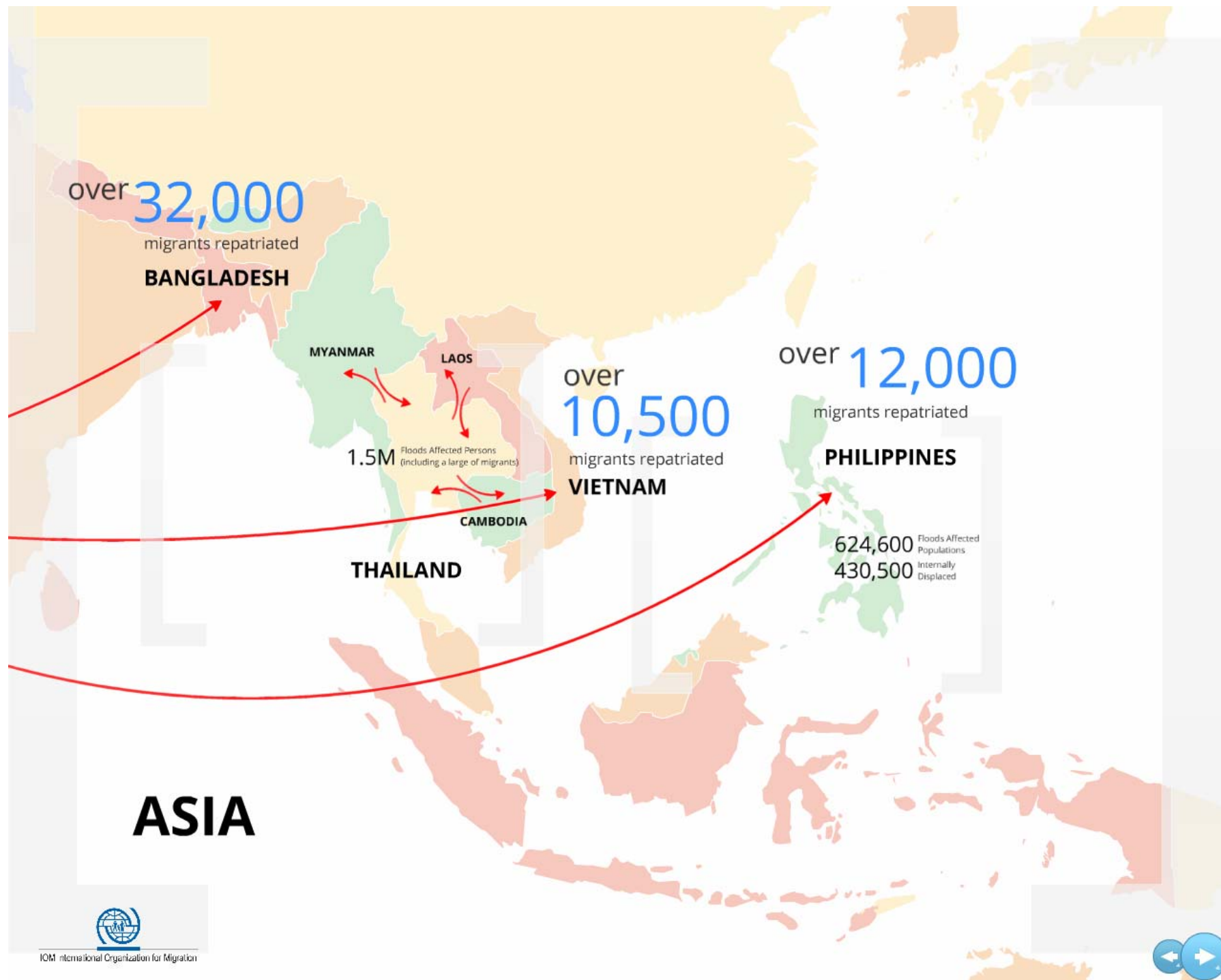
1.8 million migrant workers residing in
Libya at the time of the crisis

Migrants totaled about 10% of Libya's total
population

was viewed as a transit country for irregular
migration to Europe

Libyan Crisis 2011







*Cross-border arrivals by boat to Italy and Malta
represented*

**3.9% of persons
fleeing Libya**

ITALY & MALTA

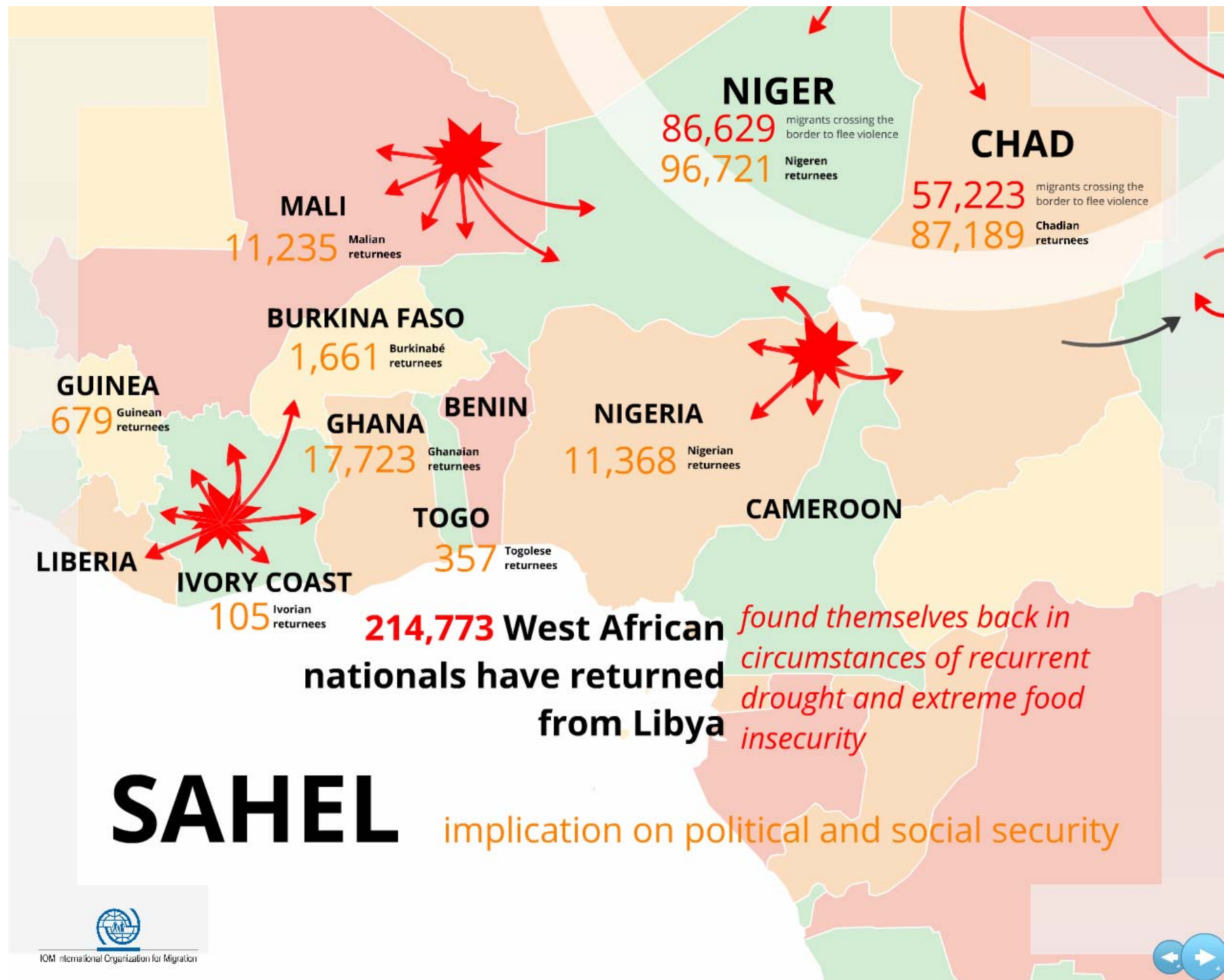
25,935 migrants crossing the
border to flee violence

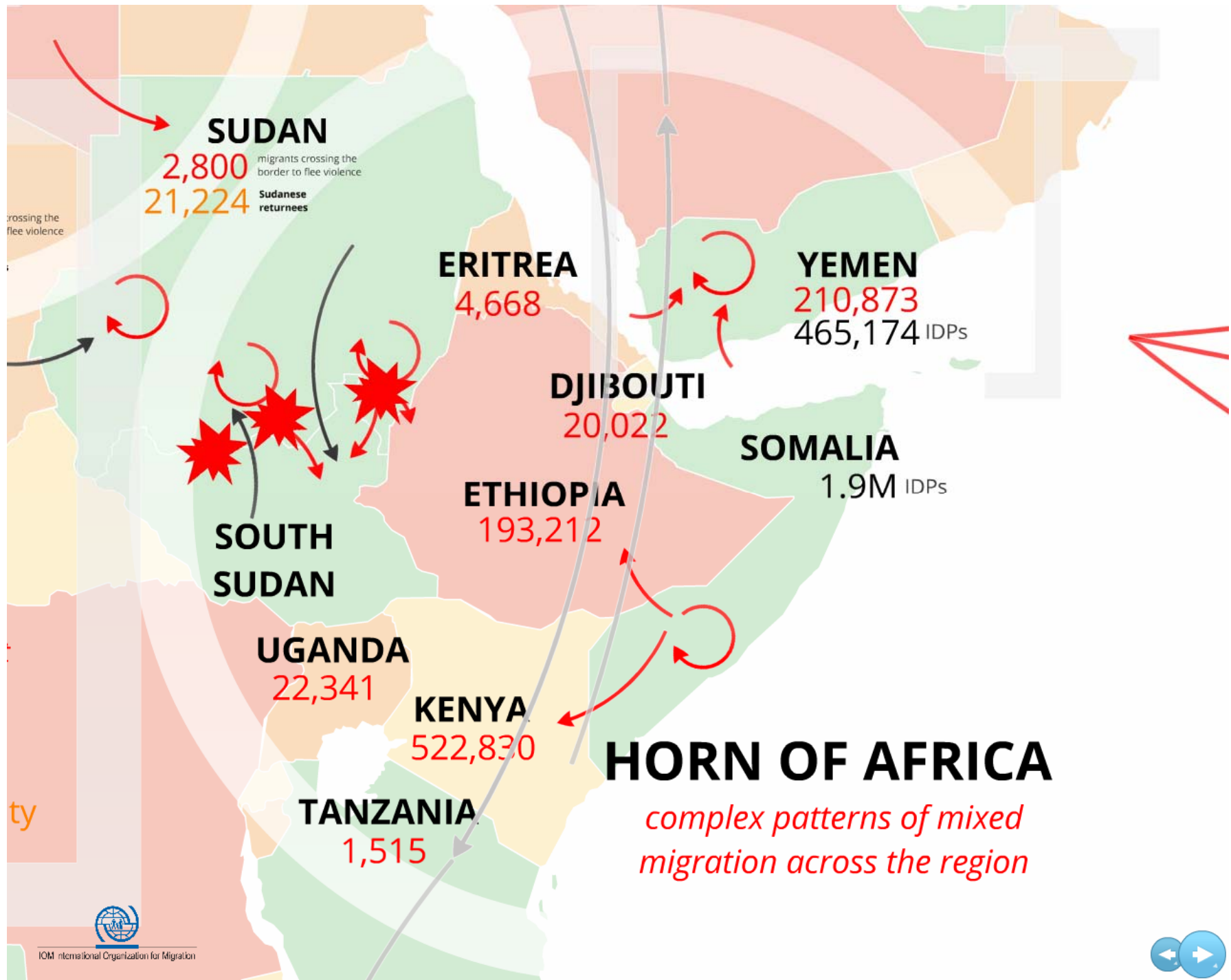
L

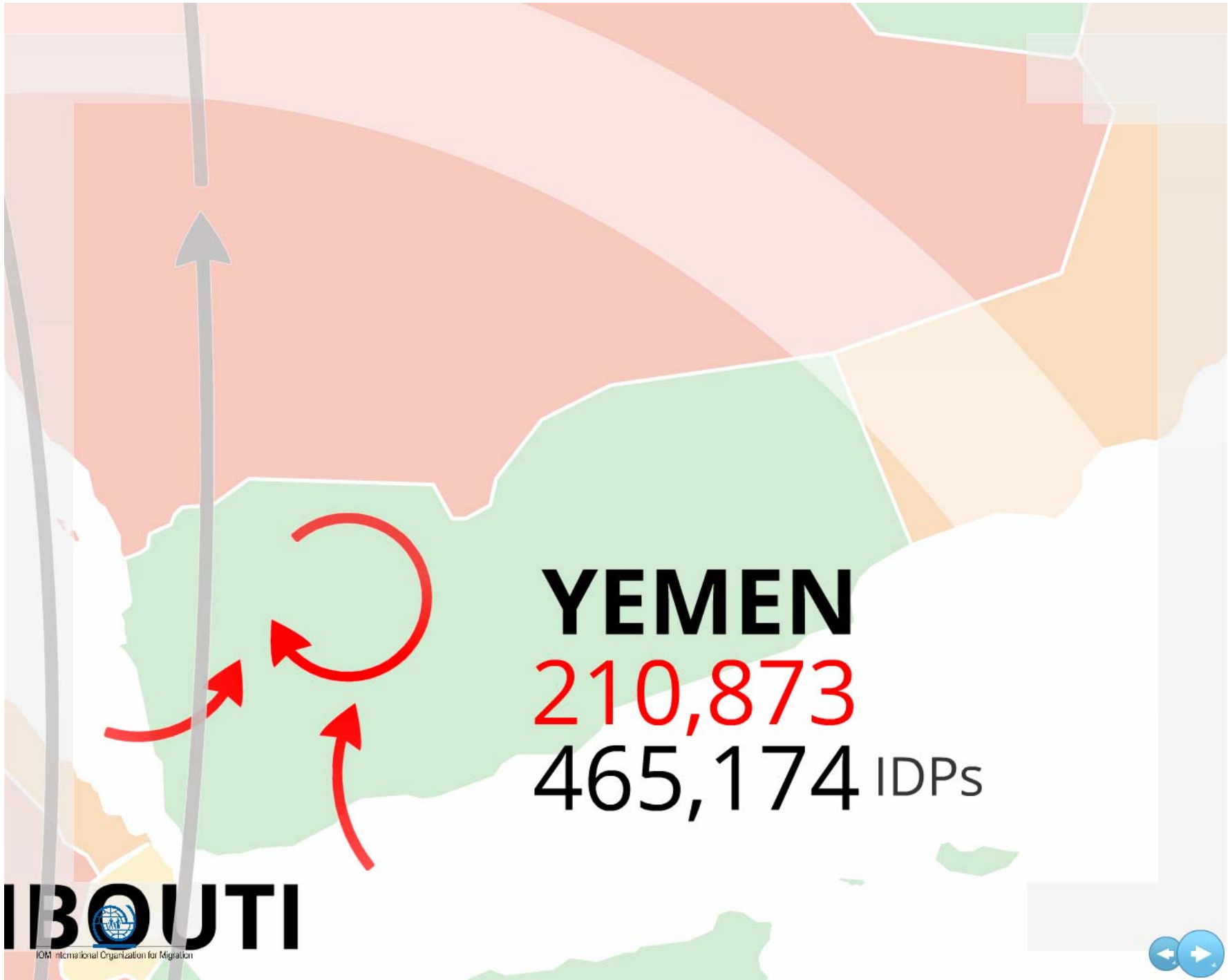


IOM International Organization for Migration









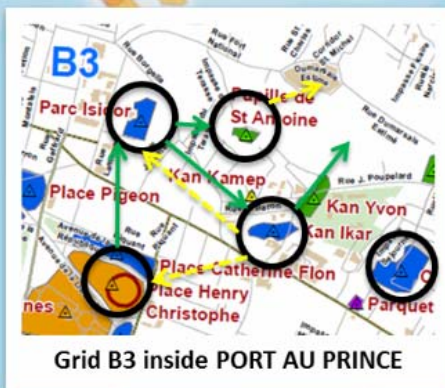
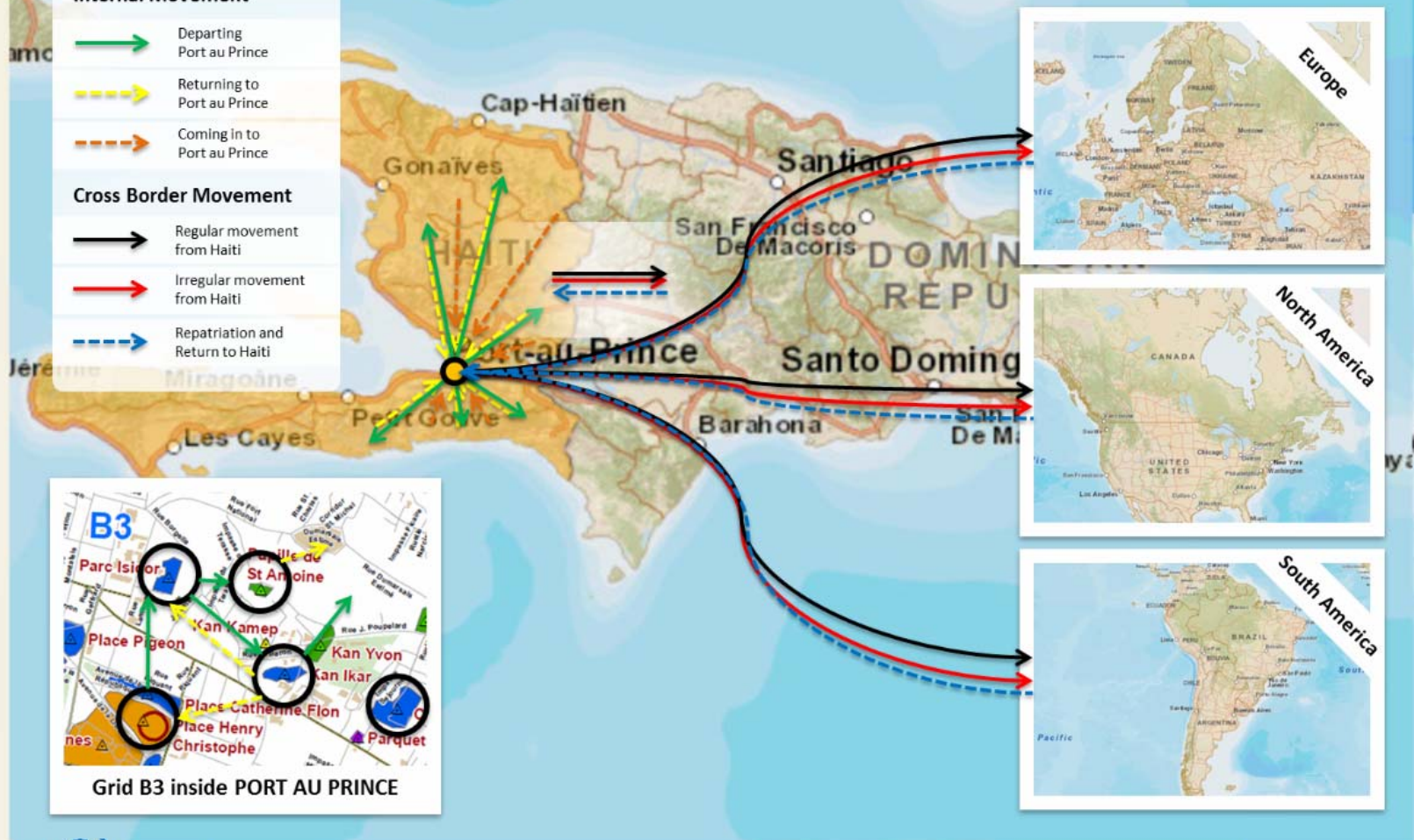
Haiti

Internal Movement

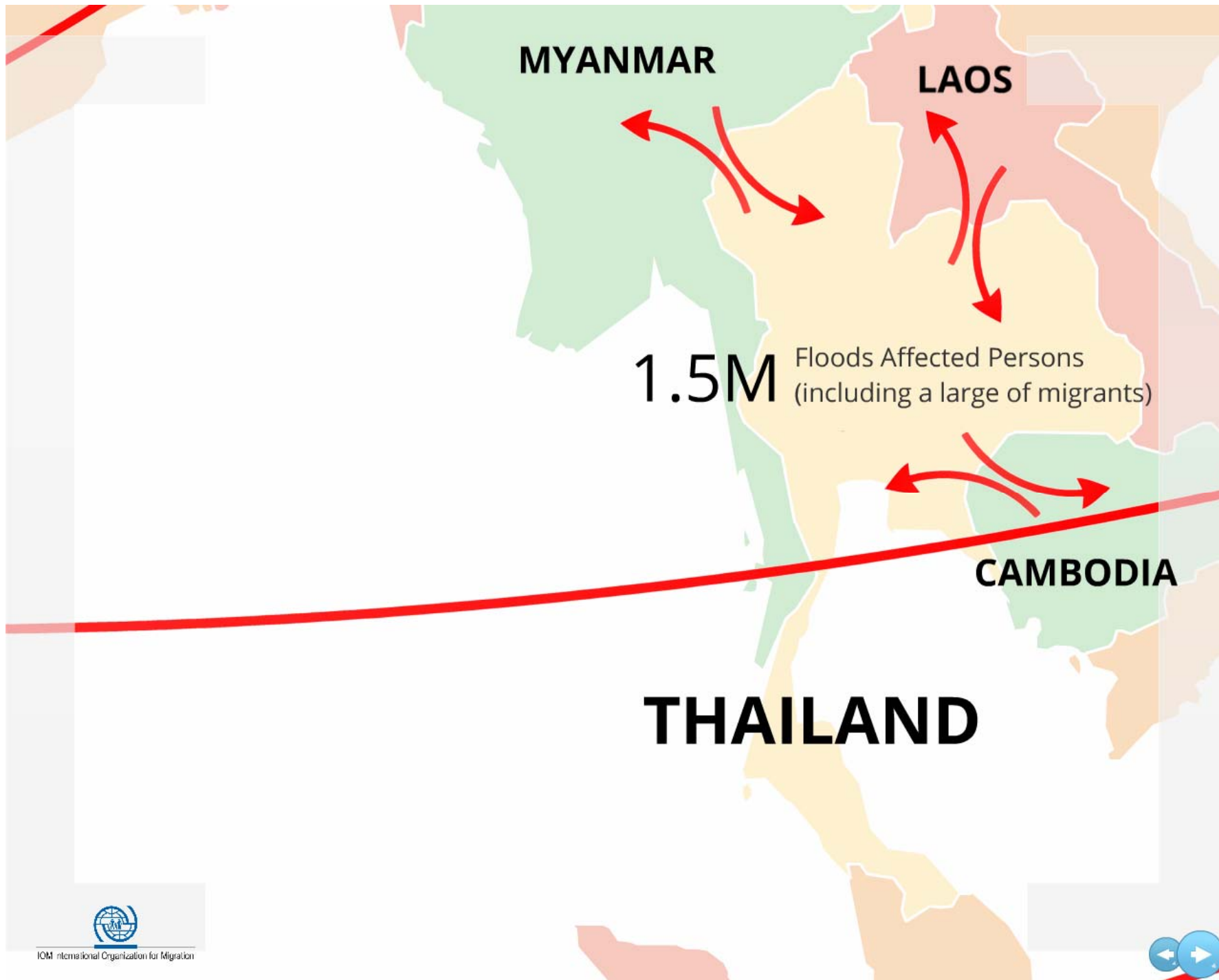
-  Departing Port au Prince
-  Returning to Port au Prince
-  Coming in to Port au Prince

Cross Border Movement

-  Regular movement from Haiti
-  Irregular movement from Haiti
-  Repatriation and Return to Haiti







500

s repatriated

AM

migrants repatriated

PHILIPPINES

624,600 Floods Affected Populations

430,500 Internally Displaced



IOM International Organization for Migration





Thank you

Assisting a World on the Move for 60 Years



Migration for the Benefit of All