

775000

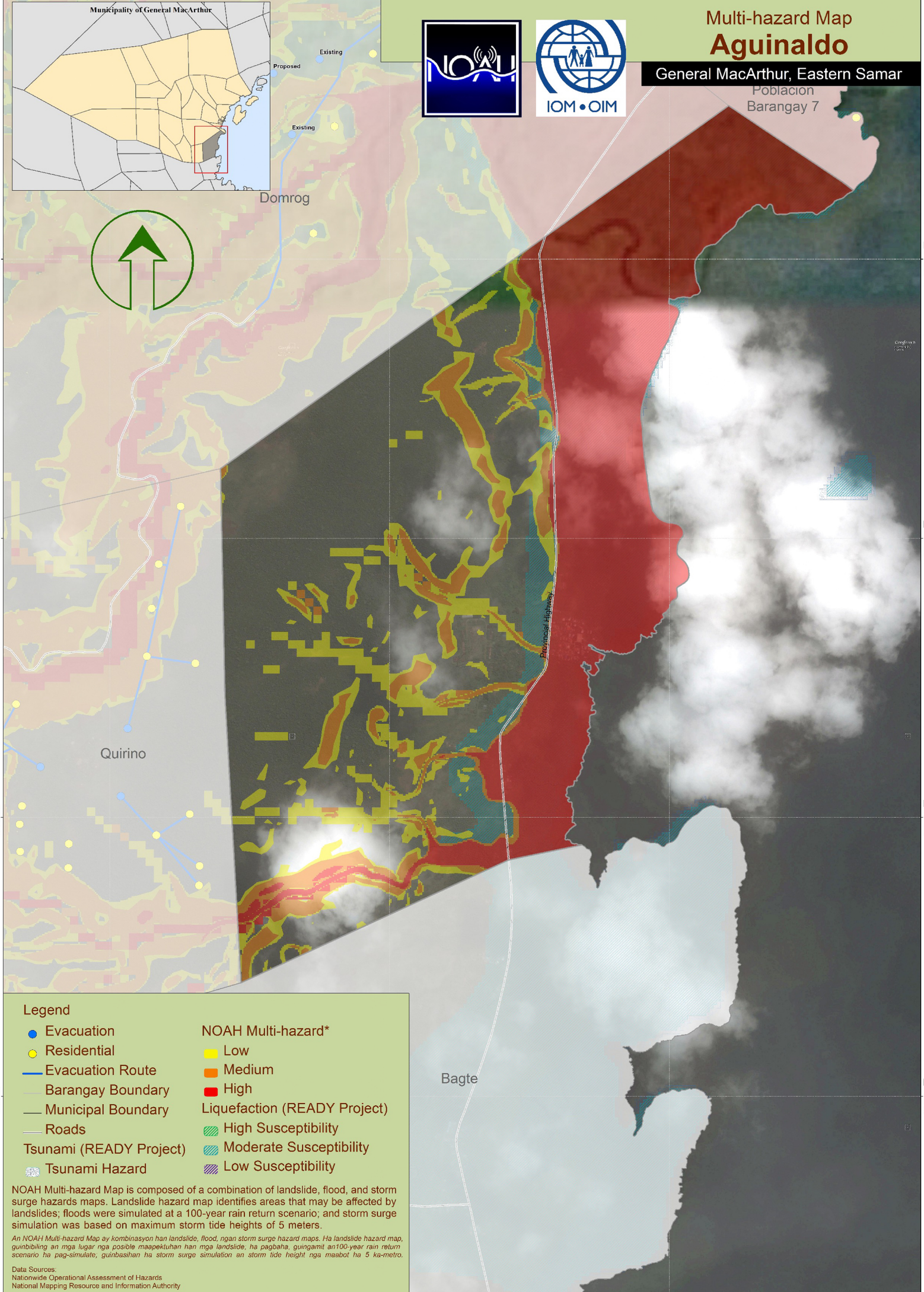
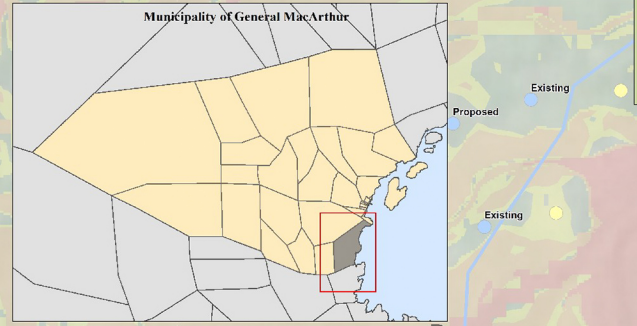
776000

777000

Municipality of General MacArthur

Multi-hazard Map Aguinaldo

General MacArthur, Eastern Samar
Poblacion
Barangay 7



Legend

- Evacuation
- Residential
- Evacuation Route
- Barangay Boundary
- Municipal Boundary
- Roads
- Tsunami (READY Project)
- Tsunami Hazard

NOAH Multi-hazard*

- Low
- Medium
- High

Liquefaction (READY Project)

- High Susceptibility
- Moderate Susceptibility
- Low Susceptibility

NOAH Multi-hazard Map is composed of a combination of landslide, flood, and storm surge hazards maps. Landslide hazard map identifies areas that may be affected by landslides; floods were simulated at a 100-year rain return scenario; and storm surge simulation was based on maximum storm tide heights of 5 meters.

An NOAH Multi-hazard Map ay kombinasyon han landslide, flood, ngan storm surge hazard maps. Ha landslide hazard map, quinbibling an mga lugar nga posible maapektohan han mga landslide, ha pagbaha, gungamit an 100-year rain return scenario ha pag-simulate, quinbasihan ha storm surge simulation an storm tide height nga maabot ha 5 ka-metro.

Data Sources:
 Nationwide Operational Assessment of Hazards
 National Mapping Resource and Information Authority

775000

776000

777000

1243000
1242000
1241000
1240000

1243000
1242000
1241000
1240000