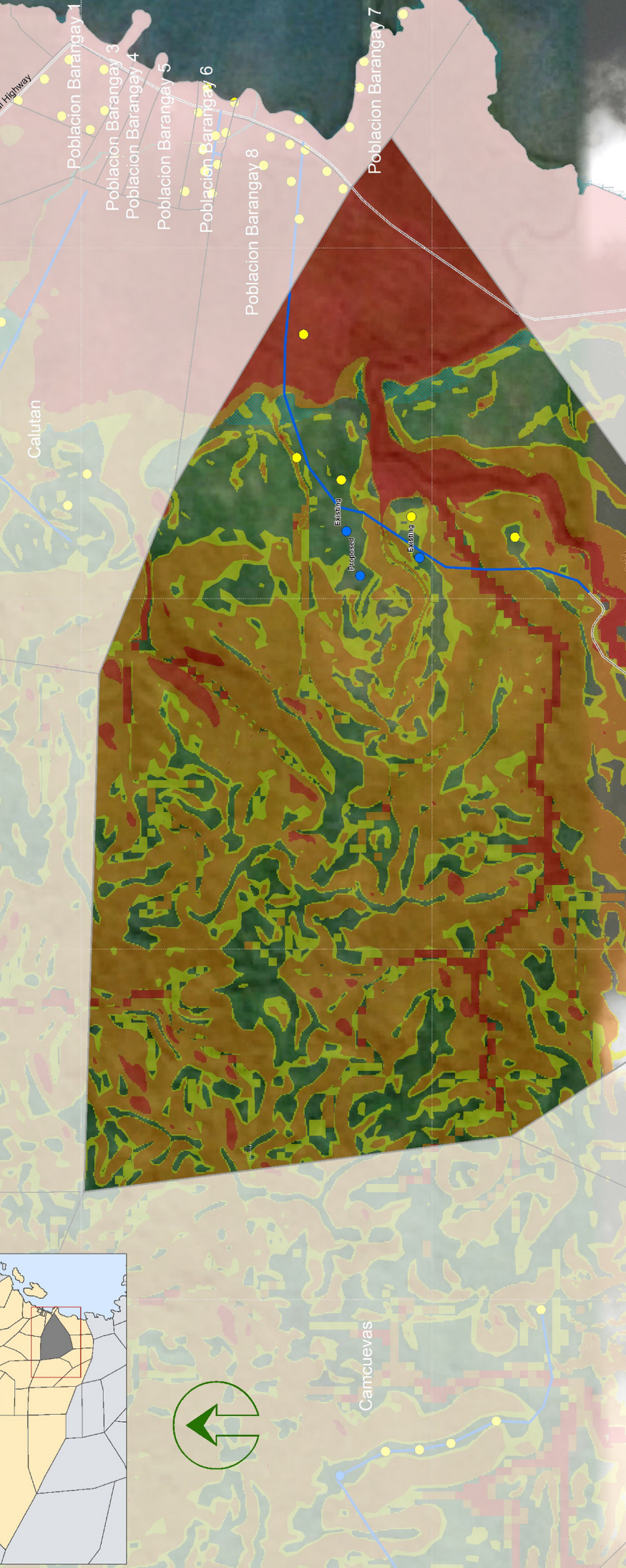


Multi-hazard Map Domrog

General MacArthur, Eastern Samar



- ### Legend
- Evacuation Center
 - Residential
 - Evacuation Route
 - Barangay Boundary
 - Municipal Boundary
 - Roads
 - Tsunami (READY Project)
 - Tsunami Hazard
- NOAH Multi-hazard***
 - Low
 - Medium
 - High
 - Liquefaction (READY Project)**
 - High Susceptibility
 - Moderate Susceptibility
 - Low Susceptibility

NOAH Multi-hazard Map is composed of a combination of landslide, flood, and storm surge hazards maps. Landslide hazard map identifies areas that may be affected by landslides; floods were simulated at a 100-year rain return scenario; and storm surge simulation was based on maximum storm tide heights of 5 meters.

An NOAH Multi-hazard Map ay kombinasyon han landslide, flood, ngan storm surge hazard maps. Ha landslide hazard map, gunbbing an mga lugar nga possible maapektuhan han mga landslide, ha pagbaha, gungamt an 100-year rain return scenario ha pag-simulate; gunbbasihan ha storm surge simulation an storm tide height nga msaobot ha 5 ka-metro.

Data Sources:
 Nationwide Operational Assessment of Hazards
 National Mapping Resource and Information Authority

