

Multi-hazard Map Laurel

General MacArthur, Eastern Samar

1254000

1254000

1252000

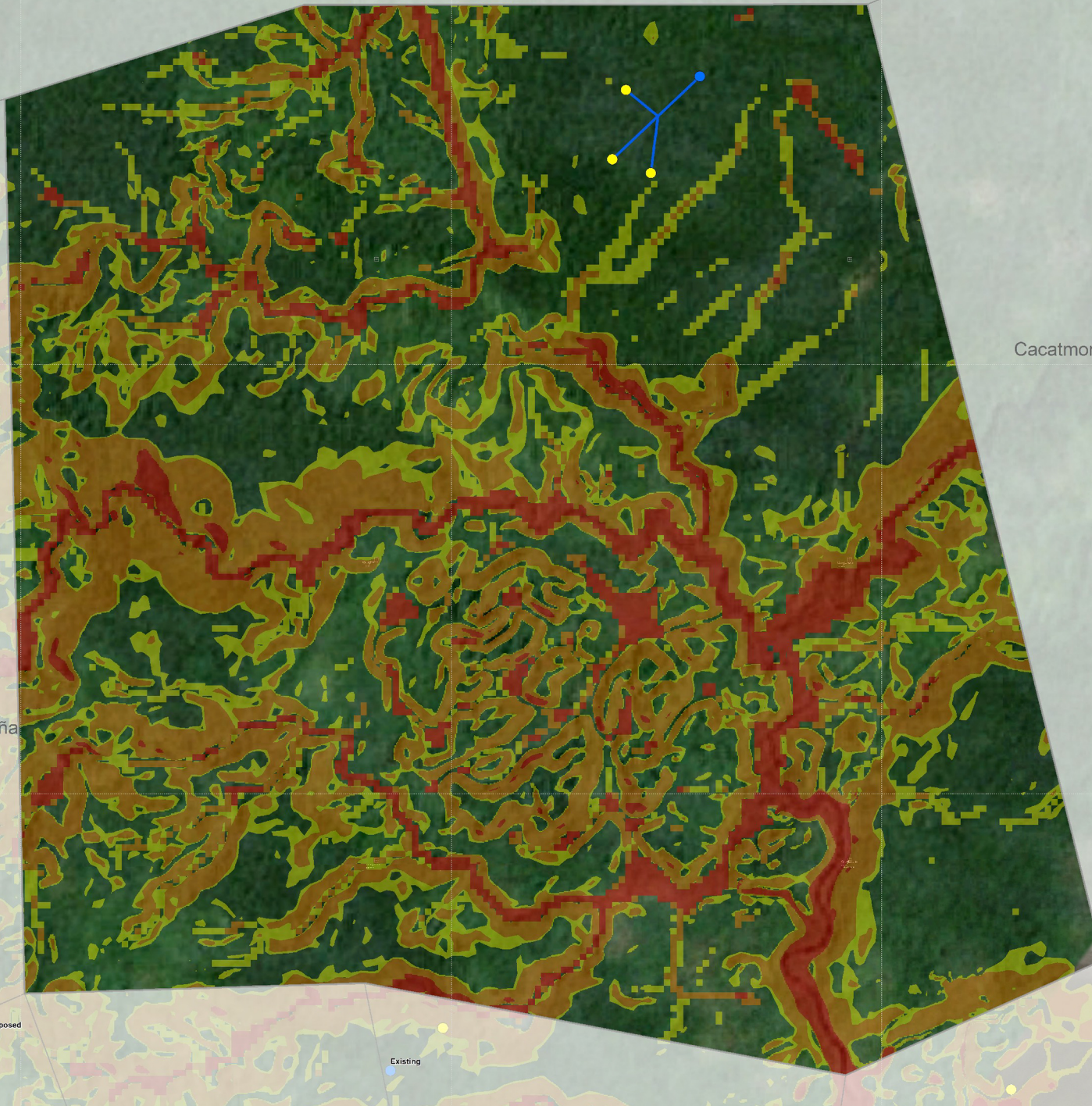
1252000

1250000

1250000

1248000

1248000



Cacatmonan

Osmeña

San Miguel

proposed

Existing

Provincial Highway

Binalay

Legend

- Evacuation Center
 - Residential
 - Evacuation Route
 - Barangay Boundary
 - Municipal Boundary
 - Roads
 - Tsunami (READY Project)
 - Tsunami Hazard
-
- NOAH Multi-hazard***
 - Low
 - Medium
 - High
-
- Liquefaction (READY Project)**
 - High Susceptibility
 - Moderate Susceptibility
 - Low Susceptibility

NOAH Multi-hazard Map is composed of a combination of landslide, flood, and storm surge hazards maps. Landslide hazard map identifies areas that may be affected by landslides; floods were simulated at a 100-year rain return scenario; and storm surge simulation was based on maximum storm tide heights of 5 meters.

An NOAH Multi-hazard Map ay kombinasyon han landslide, flood, ngan storm surge hazard maps. Ha landslide hazard map, quinbibling an mga lugar nga posible maapekluhan han mga landslide, ha pagbaha, gungamit an 100-year rain return scenario ha pag-simulate; gumbasihan ha storm surge simulation an storm tide height nga maabot ha 5 ka-metro.

Data Sources:
 Nationwide Operational Assessment of Hazards
 National Mapping Resource and Information Authority

