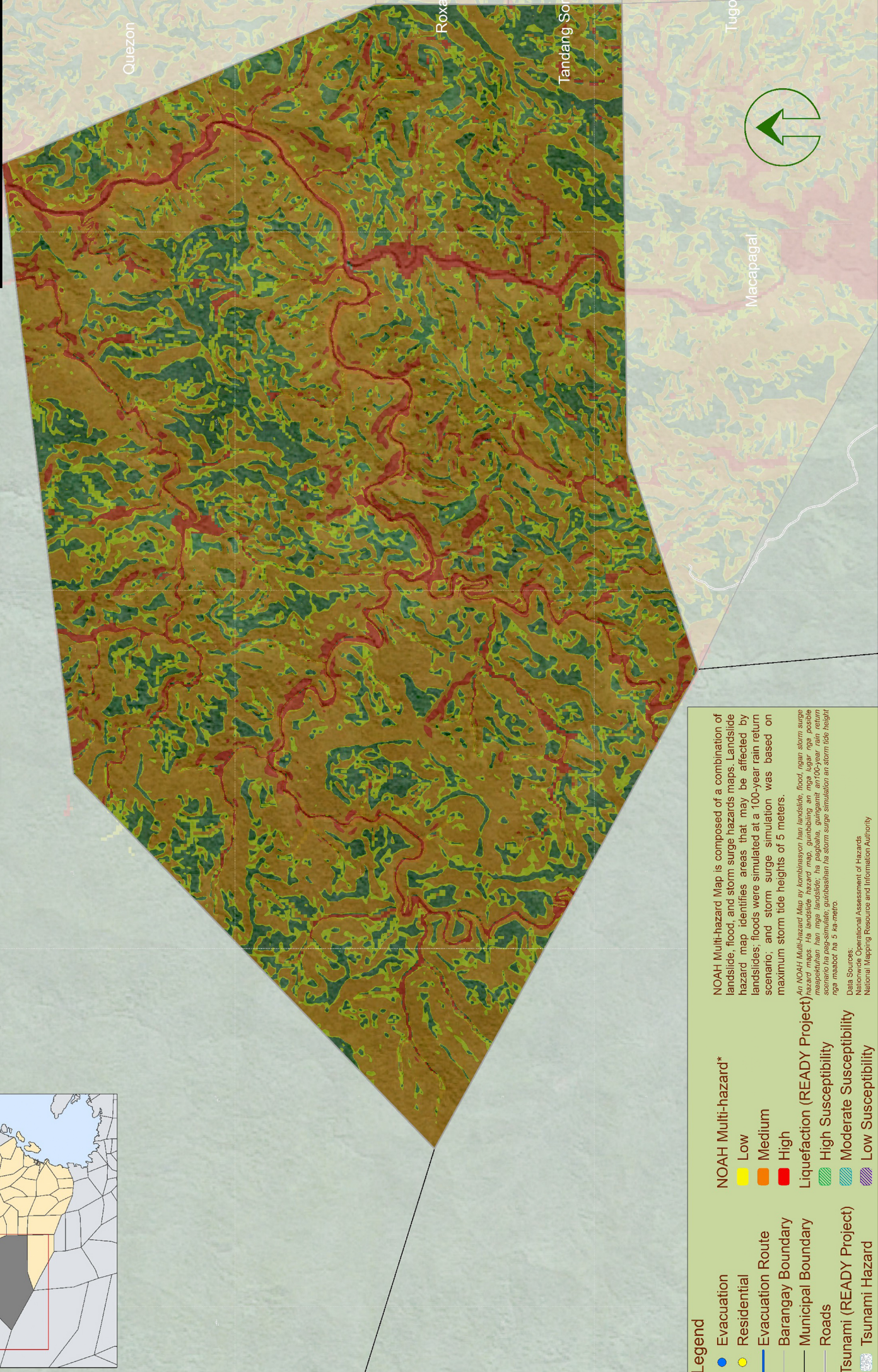
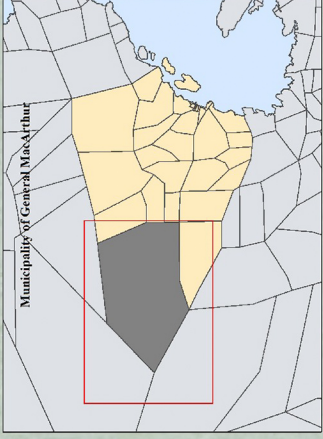


Multi-hazard Map Magsaysay

General MacArthur, Eastern Samar



Legend

- Evacuation
- Residential
- Evacuation Route
- Barangay Boundary
- Municipal Boundary
- Roads
- Tsunami (READY Project)
- Tsunami Hazard

NOAH Multi-hazard*

- Low
- Medium
- High

Liquefaction (READY Project)

- High Susceptibility
- Moderate Susceptibility
- Low Susceptibility

NOAH Multi-hazard Map is composed of a combination of landslide, flood, and storm surge hazards maps. Landslide hazard map identifies areas that may be affected by landslides; floods were simulated at a 100-year rain return scenario; and storm surge simulation was based on maximum storm tide heights of 5 meters.

An NOAH Multi-hazard Map ay kombinasyon ng landslide, flood, ugan storm surge hazard maps. Ha landslide hazard map, gumibing an mga lugar na posible magaputlan han mga landslide; ha pagbaha, gumagamit an 100-year rain return scenario ha pag-simulate; gumibashan ha storm surge simulation an storm tide height nga maabot ha 5 ka metro.

Data Sources:
National Operational Assessment of Hazards
National Mapping, Resource and Information Authority

7595000 763000 766500 1246000 1249500