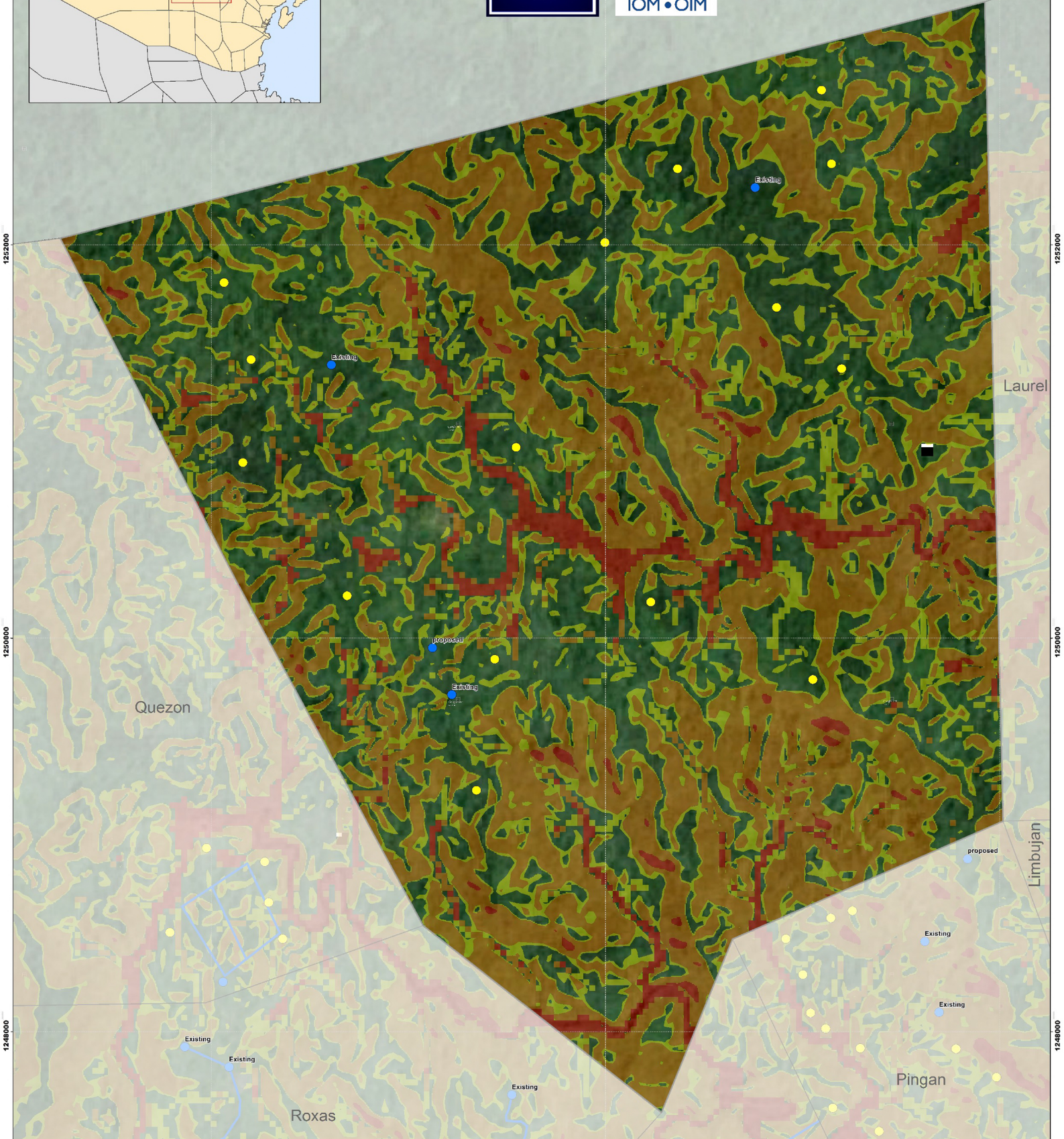


Multi-hazard Map Osmeña

General MacArthur, Eastern Samar



- Legend**
- Evacuation
 - Residential
 - Evacuation Route
 - Barangay Boundary
 - Municipal Boundary
 - Roads
 - Tsunami (READY Project)
 - Tsunami Hazard

- NOAH Multi-hazard***
- Low
 - Medium
 - High
- Liquefaction (READY Project)**
- High Susceptibility
 - Moderate Susceptibility
 - Low Susceptibility

NOAH Multi-hazard Map is composed of a combination of landslide, flood, and storm surge hazards maps. Landslide hazard map identifies areas that may be affected by landslides; floods were simulated at a 100-year rain return scenario; and storm surge simulation was based on maximum storm tide heights of 5 meters.

In NOAH Multi-hazard Map ay kombinasyon han landslide, flood, ngan storm surge hazard maps. Ha landslide hazard map, quimbibilin an mga lugar nga posible mapapoktulan han mga landslide; ha pagtaha, quingamit an 100-year rain return scenario ha pag-simulate; quimbashan ha storm surge simulation an storm tide height nga maabot ha 5 ka-metro.

Data Sources:
 Nationwide Operational Assessment of Hazards
 National Mapping Resource and Information Authority

