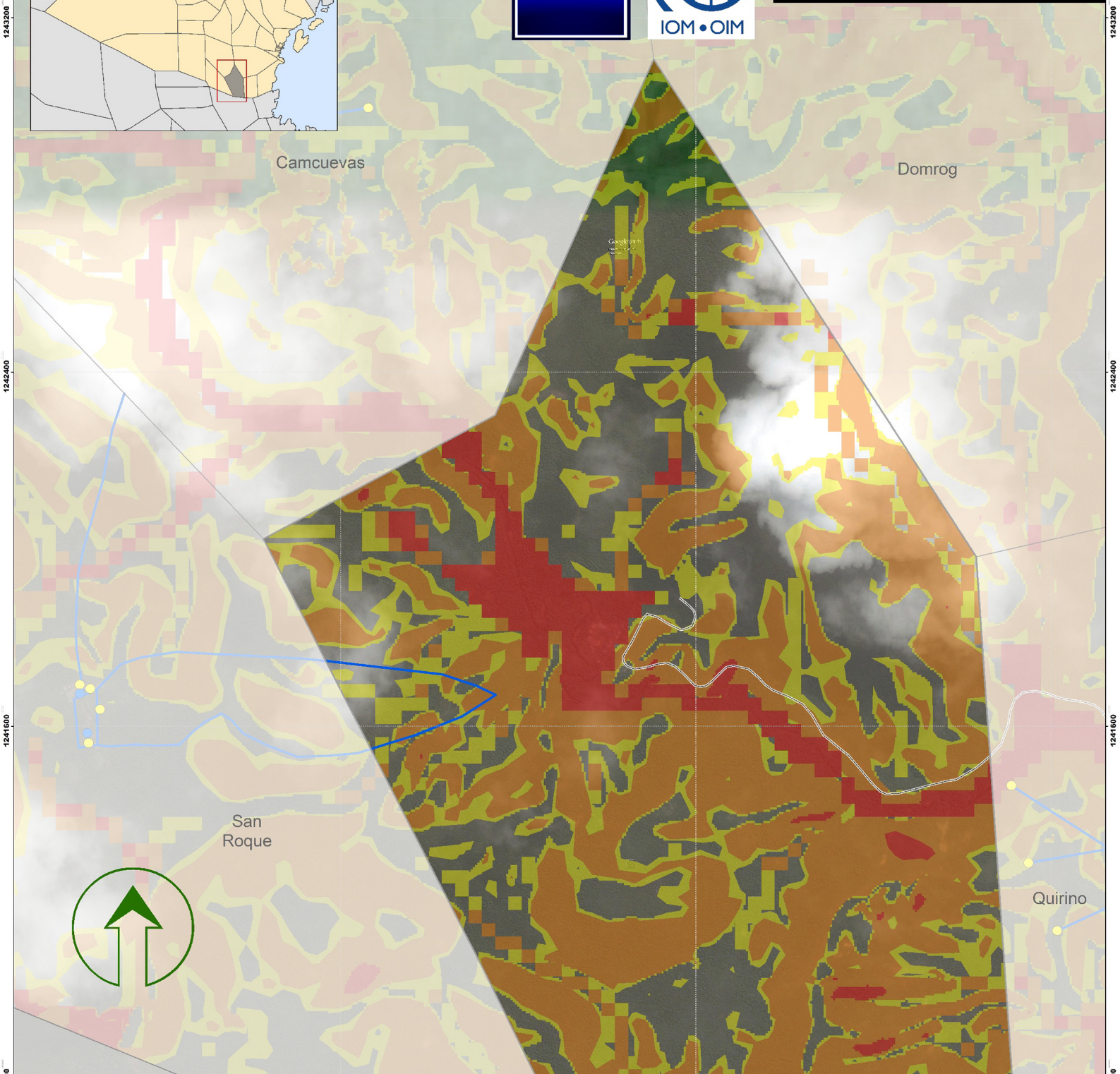


# Multi-hazard Map Santa Fe

General MacArthur, Eastern Samar



- Legend**
- Evacuation
  - Residential
  - Evacuation Route
  - Barangay Boundary
  - Municipal Boundary
  - Roads
  - Tsunami (READY Project)
  - Tsunami Hazard
- NOAH Multi-hazard\***
- Low
  - Medium
  - High
- Liquefaction (READY Project)**
- High Susceptibility
  - Moderate Susceptibility
  - Low Susceptibility

NOAH Multi-hazard Map is composed of a combination of landslide, flood, and storm surge hazards maps. Landslide hazard map identifies areas that may be affected by landslides; floods were simulated at a 100-year rain return scenario; and storm surge simulation was based on maximum storm tide heights of 5 meters.

An NOAH Multi-hazard Map ay kombinasyon han landslide, flood, ngan storm surge hazard maps. Ha landslide hazard map, gunbibiling an mga lugar nga posible maapektuhan han mga landslide; ha pagbaha, guingamit an 100-year rain return scenario ha pag-simulate, guinbasihan ha storm surge simulation an storm tide height nga maabot ha 5 ka-metro.

Data Sources:  
 Nationwide Operational Assessment of Hazards  
 National Mapping Resource and Information Authority