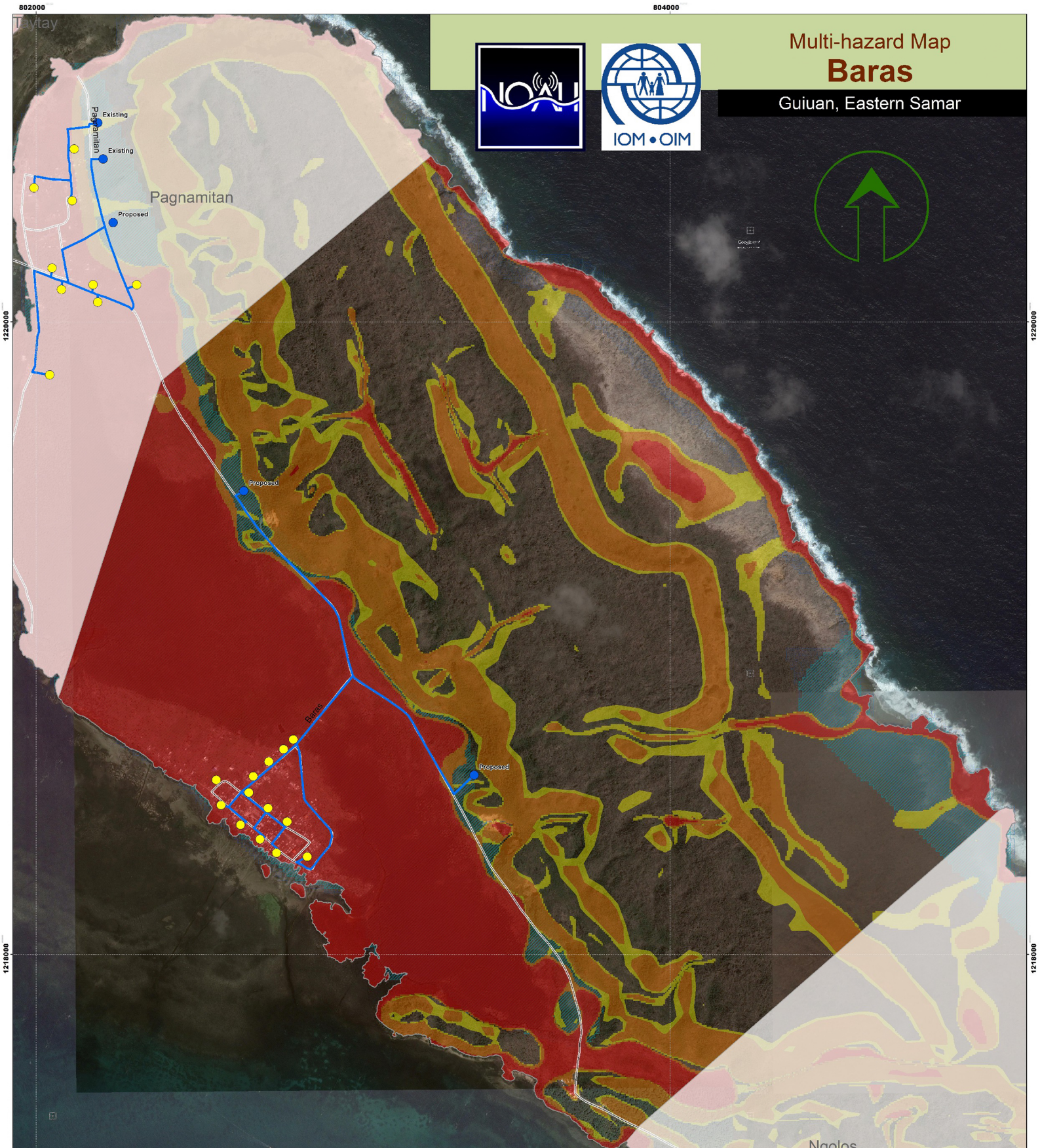


# Multi-hazard Map Baras

Guiuan, Eastern Samar



### Legend

- Evacuation
- Residential
- Evacuation Route
- Barangay Boundary
- Municipal Boundary
- Roads
- Tsunami (READY Project)
- Tsunami Hazard
- NOAH Multi-hazard\***
- Low
- Medium
- High
- Liquefaction (READY Project)**
- High Susceptibility
- Moderate Susceptibility
- Low Susceptibility

NOAH Multi-hazard Map is composed of a combination of landslide, flood, and storm surge hazards maps. Landslide hazard map identifies areas that may be affected by landslides; floods were simulated at a 100-year rain return scenario; and storm surge simulation was based on maximum storm tide heights of 5 meters.

An NOAH Multi-hazard Map ay kombinasyon han landslide, flood, ngan storm surge hazard maps. Ha landslide hazard map, gumbibiling an mga lugar nga posible maapektuhan han mga landslide; ha pagbaha, gungamt an 100-year rain return scenario ha pag-simulate; guinbasihan ha storm surge simulation an storm tide height nga maabot ha 5 ka-metro.

Data Sources:  
 Nationwide Operational Assessment of Hazards  
 National Mapping Resource and Information Authority



Municipality of Guiuan