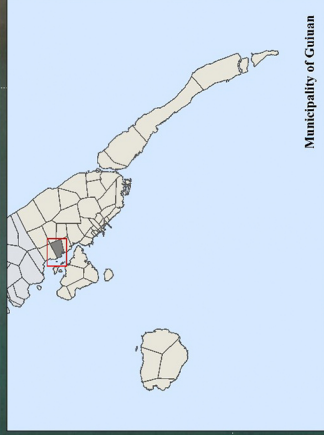
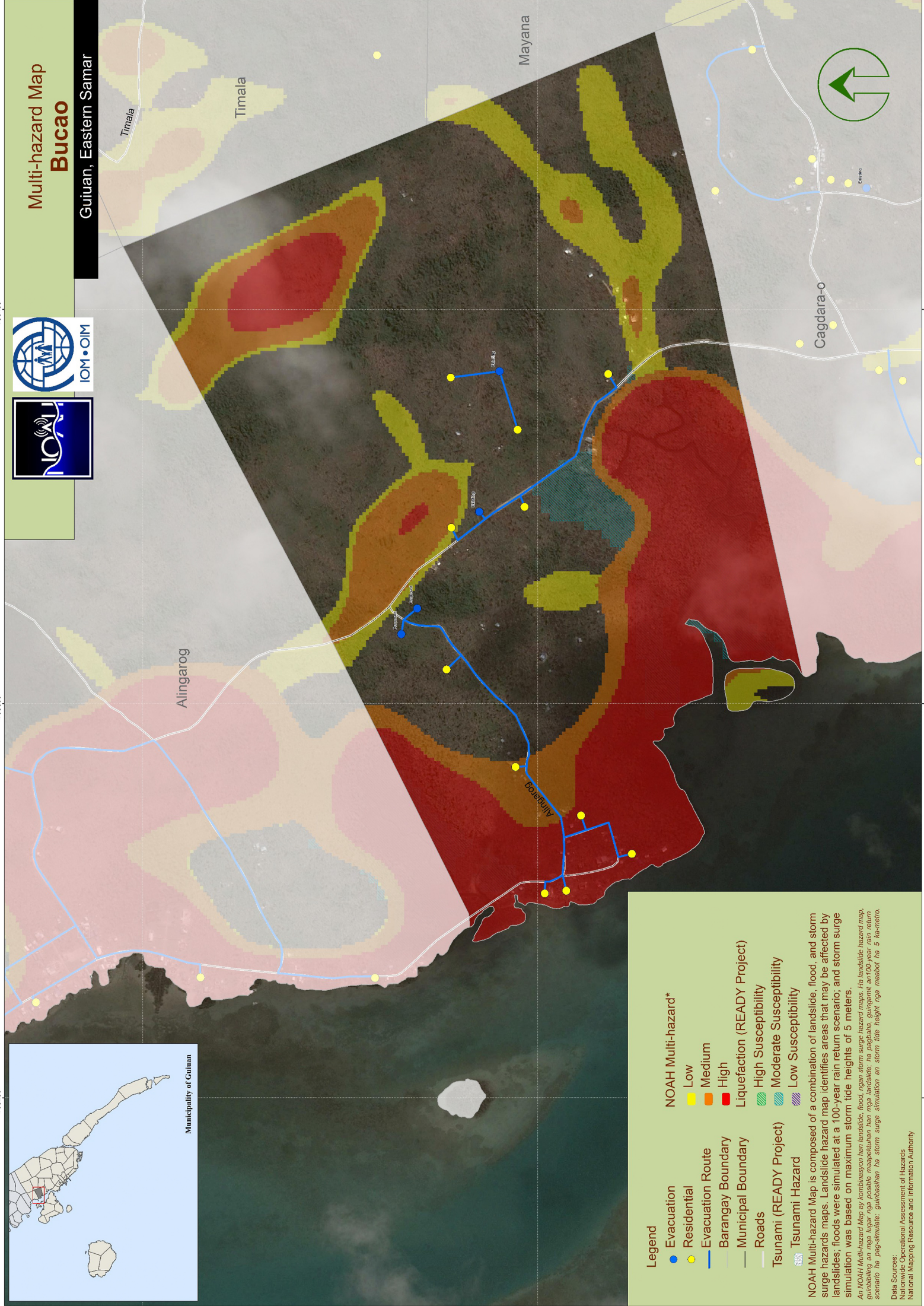


Multi-hazard Map Bucao

Guiuan, Eastern Samar



Municipality of Guiuan



- Legend**
- Evacuation
 - Residential
 - Evacuation Route
 - Barangay Boundary
 - Municipal Boundary
 - Roads
 - Tsunami (READY Project)
 - Tsunami Hazard
- NOAH Multi-hazard***
- Low
 - Medium
 - High
- Liquefaction (READY Project)**
- High Susceptibility
 - Moderate Susceptibility
 - Low Susceptibility

NOAH Multi-hazard Map is composed of a combination of landslide, flood, and storm surge hazards maps. Landslide hazard map identifies areas that may be affected by landslides; floods were simulated at a 100-year rain return scenario; and storm surge simulation was based on maximum storm tide heights of 5 meters.

An NOAH Multi-Hazard Map ay kombinasyon ng landslide, flood, ngan storm surge hazard maps. Ha landslide hazard map, gumagamit ng mga lugar niga possible maapektuhan han mga landslide; ha pagbabaha, gumagamit an 100-year rain return scenario ha pag-simulate; galing-simula ha storm surge simulation an storm tide height nagaabot ha 5 ka-metro.

Data Sources:
 Nationwide Operational Assessment of Hazards
 National Mapping Resource and Information Authority



795800

795800

795200

1224400

1223900

796400

796400

795800

1224400