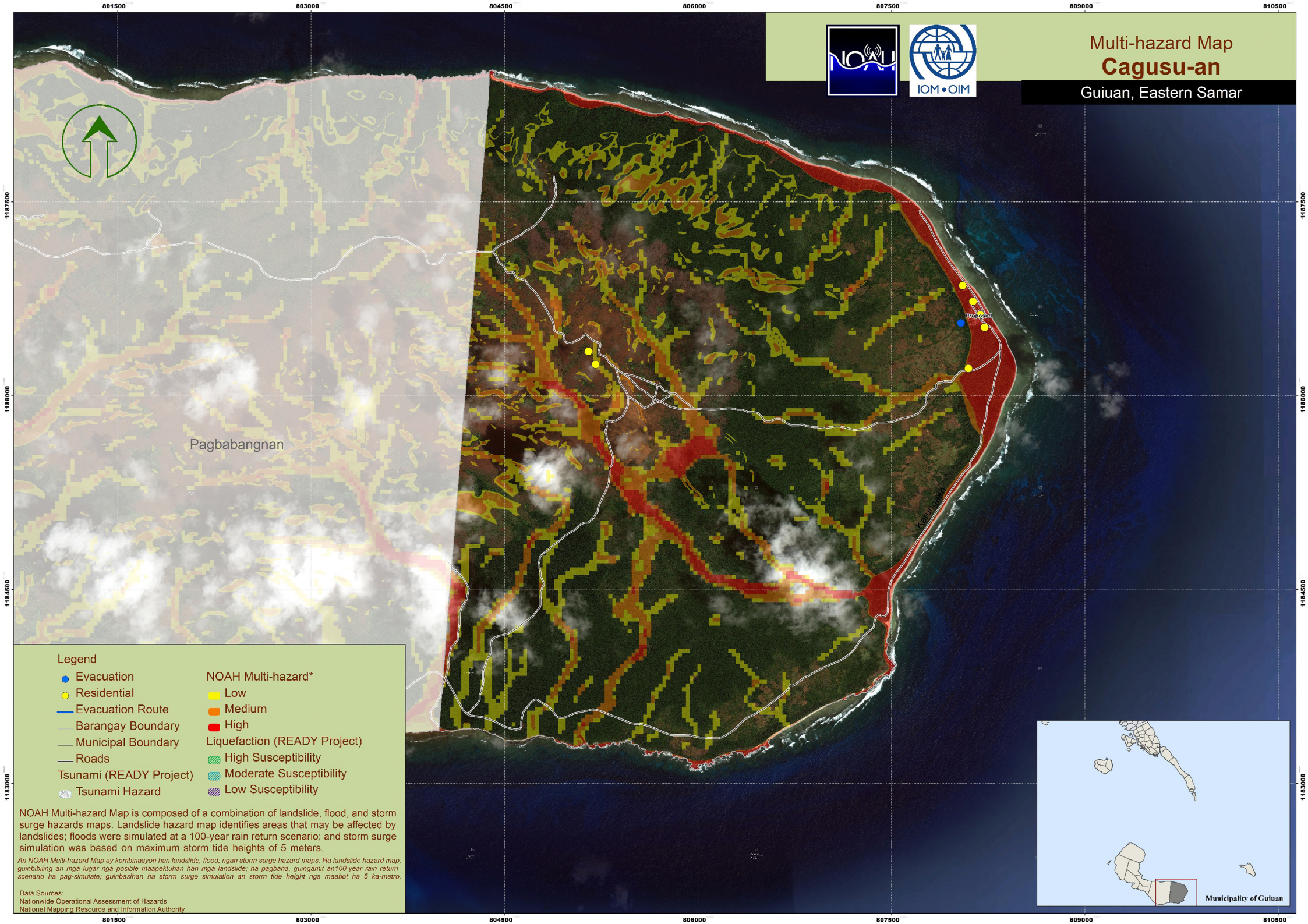


Multi-hazard Map Cagusu-an Guiuan, Eastern Samar



Legend

- Evacuation
- Residential
- Evacuation Route
- Barangay Boundary
- Municipal Boundary
- Roads
- Tsunami (READY Project)
- Tsunami Hazard

NOAH Multi-hazard*

- Low
- Medium
- High

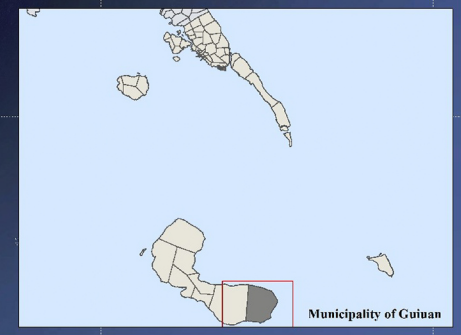
Liquefaction (READY Project)

- High Susceptibility
- Moderate Susceptibility
- Low Susceptibility

NOAH Multi-hazard Map is composed of a combination of landslide, flood, and storm surge hazards maps. Landslide hazard map identifies areas that may be affected by landslides; floods were simulated at a 100-year rain return scenario; and storm surge simulation was based on maximum storm tide heights of 5 meters.

An NOAH Multi-hazard Map ay kombinasyon han landslide, flood, nigan storm surge hazard maps. Ha landslide hazard map, guimbiling an mga lugar nga posible mapapektuhan han mga landslide, ha pagbaha, guingamit an 100-year rain return scenario ha pag-simulate; guimbashan ha storm surge simulation an storm tide height nga maabot ha 5 ka-metro.

Data Sources:
 Nationwide Operational Assessment of Hazards
 National Mapping Resource and Information Authority



801500 803000 804500 806000 807500 809000 810500

1187500 1186000 1184500 1183000