

Multi-hazard Map Camparang

Guiuan, Eastern Samar



San Antonio

San Pedro

Esakbung

Esakbung

Esakbung

Esakbung

Esakbung

Esakbung

Esakbung

Esakbung

Esakbung

Esakbung

Esakbung

Esakbung

Esakbung

Esakbung

Esakbung

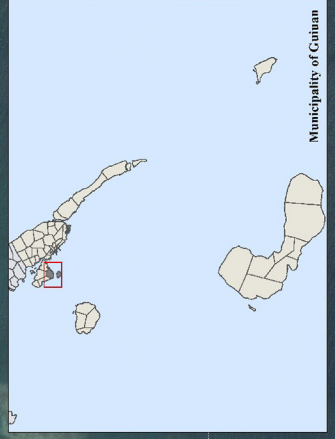
Esakbung

Esakbung

Esakbung

Esakbung

Esakbung



Municipality of Guiuan

Legend

- Evacuation
- Residential
- Evacuation Route
- Barangay Boundary
- Municipal Boundary
- Roads
- Tsunami (READY Project)
- Tsunami Hazard

NOAH Multi-hazard*

- Low
- Medium
- High

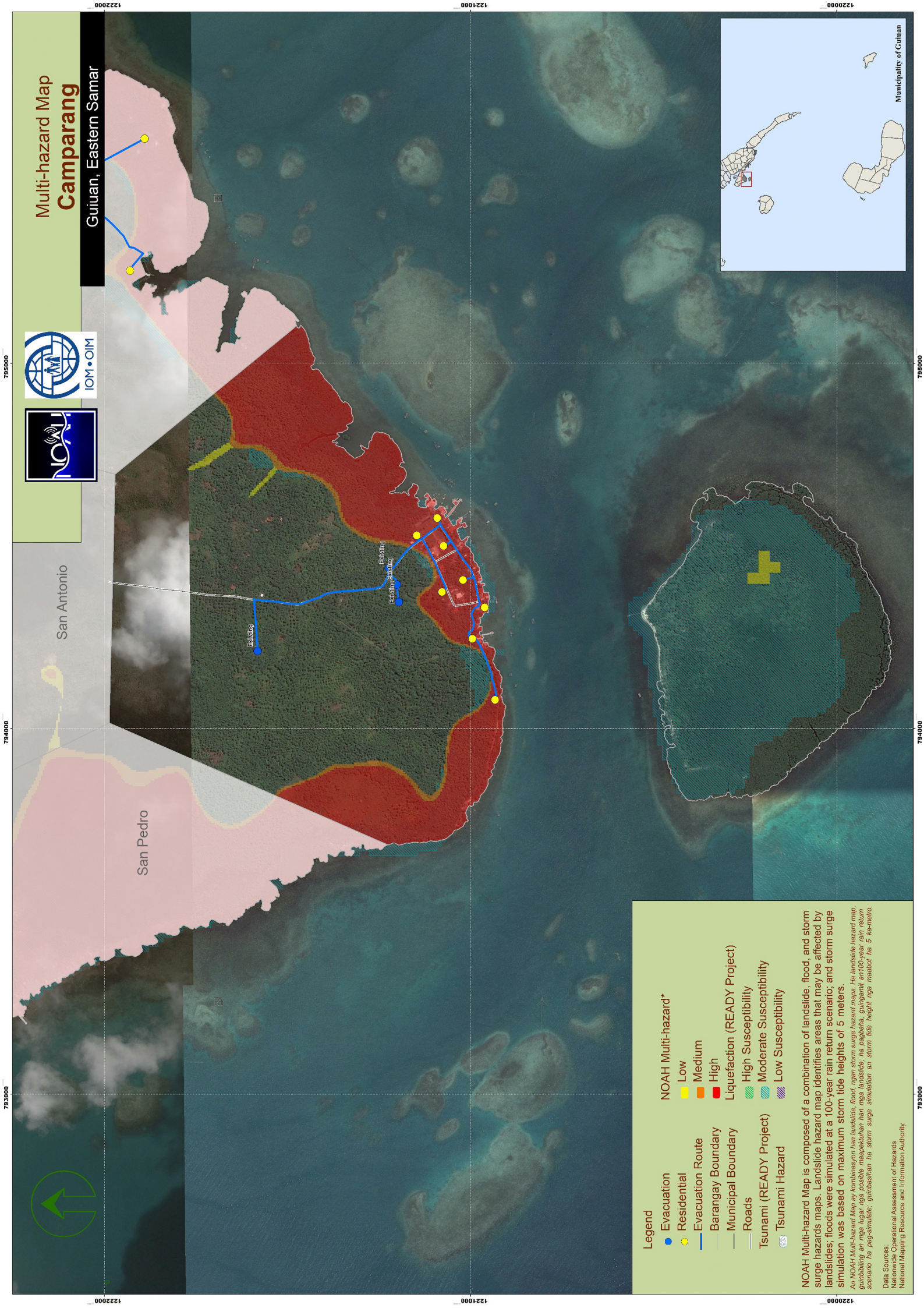
Liquefaction (READY Project)

- High Susceptibility
- Moderate Susceptibility
- Low Susceptibility

NOAH Multi-hazard Map is composed of a combination of landslide, flood, and storm surge hazards maps. Landslide hazard map identifies areas that may be affected by landslides; floods were simulated at a 100-year rain return scenario; and storm surge simulation was based on maximum storm tide heights of 5 meters.

An NOAH Multi-hazard Map ay kombinasyon hin landslide, flood, ngan storm surge hazard maps. Hin landslide hazard map, gumibbing hin mga lugar nga posible maapekahan hin mga landslide, hin pagbababa, gungamt hin 100-year rain return scenario hin pag-simulate, gumibbing hin storm surge simulation hin storm tide height nga treabot hin 5 metro.

Data Sources:
 National Operational Assessment of Hazards
 National Mapping Resource and Information Authority



753000 754000 755000 756000 757000 758000 759000 760000 761000 762000 763000 764000 765000 766000 767000 768000 769000 770000 771000 772000 773000 774000 775000 776000 777000 778000 779000 780000 781000 782000 783000 784000 785000 786000 787000 788000 789000 790000 791000 792000 793000 794000 795000 796000 797000 798000 799000 800000