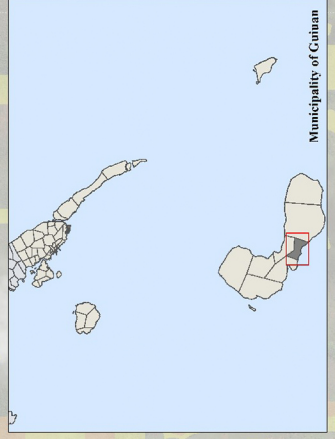
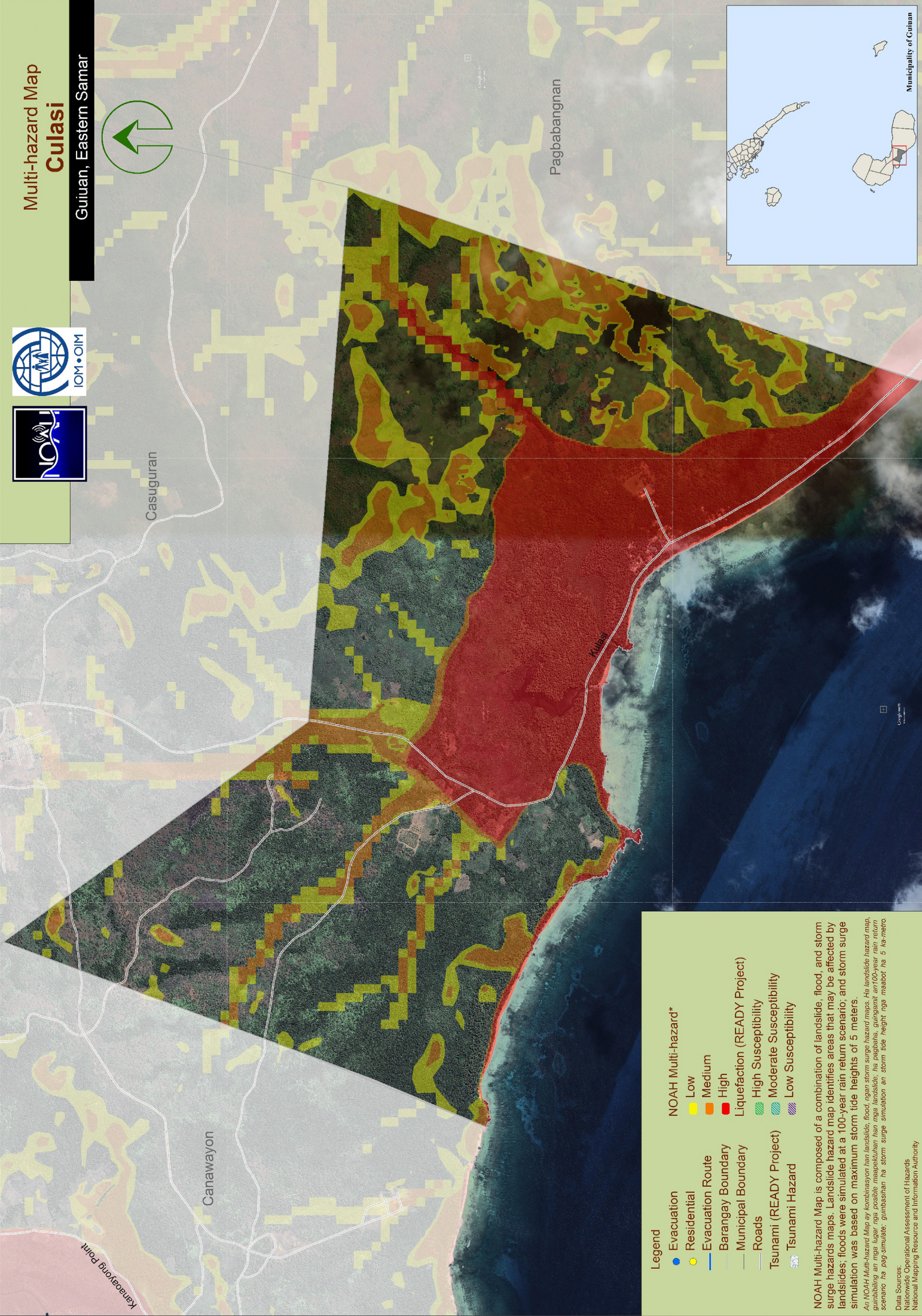


Multi-hazard Map Culasi

Guiuan, Eastern Samar



- Legend**
- Evacuation
 - Residential
 - Evacuation Route
 - Barangay Boundary
 - Municipal Boundary
 - Roads
 - Tsunami (READY Project)
 - Tsunami Hazard
- NOAH Multi-hazard***
- Low
 - Medium
 - High
- Liquefaction (READY Project)**
- High Susceptibility
 - Moderate Susceptibility
 - Low Susceptibility

NOAH Multi-hazard Map is composed of a combination of landslide, flood, and storm surge hazards maps. Landslide hazard map identifies areas that may be affected by landslides; floods were simulated at a 100-year rain return scenario, and storm surge simulation was based on maximum storm tide heights of 5 meters.

An NOAH Multi-hazard Map ay kombinasyon han landslide, flood, ogan storm surge hazard maps. Ha landslide hazard map, gumbablan an mga lugar nga posible mapapekutan han nga landslide; ha pagbabala, gumbablan an 100-year rain return scenario ha pag-simulate; gumbablan ha storm surge simulation an storm tide height nga maabot ha 5 ka metro.

Data Sources:
 Operational Assessment of Hazards
 National Mapping Resources and Information Authority

797000 798000 799000 800000

1187500 1188000 1188500 1189000