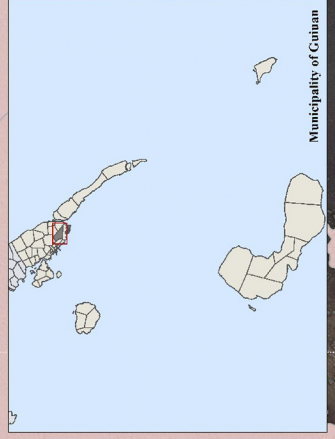
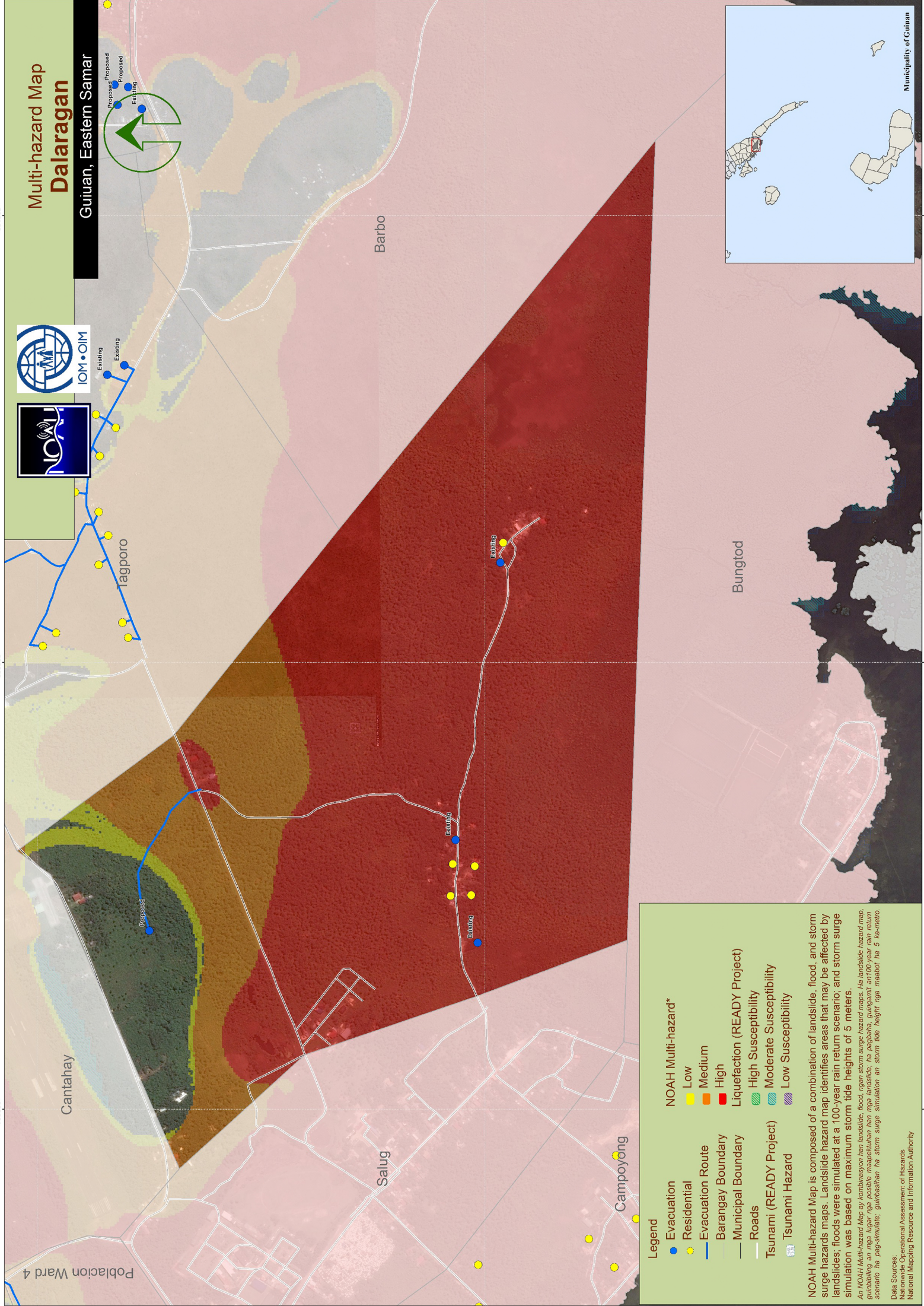
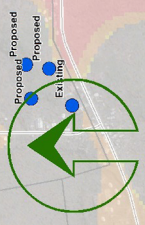


# Multi-hazard Map Dalaragan

Guiuan, Eastern Samar



**Legend**

- Evacuation
- Residential
- Evacuation Route
- Barangay Boundary
- Municipal Boundary
- Roads
- Tsunami (READY Project)
- Tsunami Hazard

**NOAH Multi-hazard\***

- Low
- Medium
- High

**Liquefaction (READY Project)**

- High Susceptibility
- Moderate Susceptibility
- Low Susceptibility

**NOAH Multi-hazard Map** is composed of a combination of landslide, flood, and storm surge hazards maps. Landslide hazard map identifies areas that may be affected by landslides; floods were simulated at a 100-year rain return scenario; and storm surge simulation was based on maximum storm tide heights of 5 meters.

*An NOAH Multi-Hazard Map ay kombinasyon ng landslide, flood, ngan storm surge hazard maps. Ito landslide hazard map, gumabing an mga lugar nga posible magapetukanhan han mga landslide; ha pagbaha, guingamit an 100-year rain return scenario ha pag-simulate; gumabinghan ha storm surge simulation an storm tide height nga inabot ha 5 kumetro.*

**Data Sources:**  
 Nationwide Operational Assessment of Hazards  
 National Mapping Resource and Information Authority

1221000 861000 1220000 861000 795000 861000 1221000 861000 1220000 861000 795000 861000