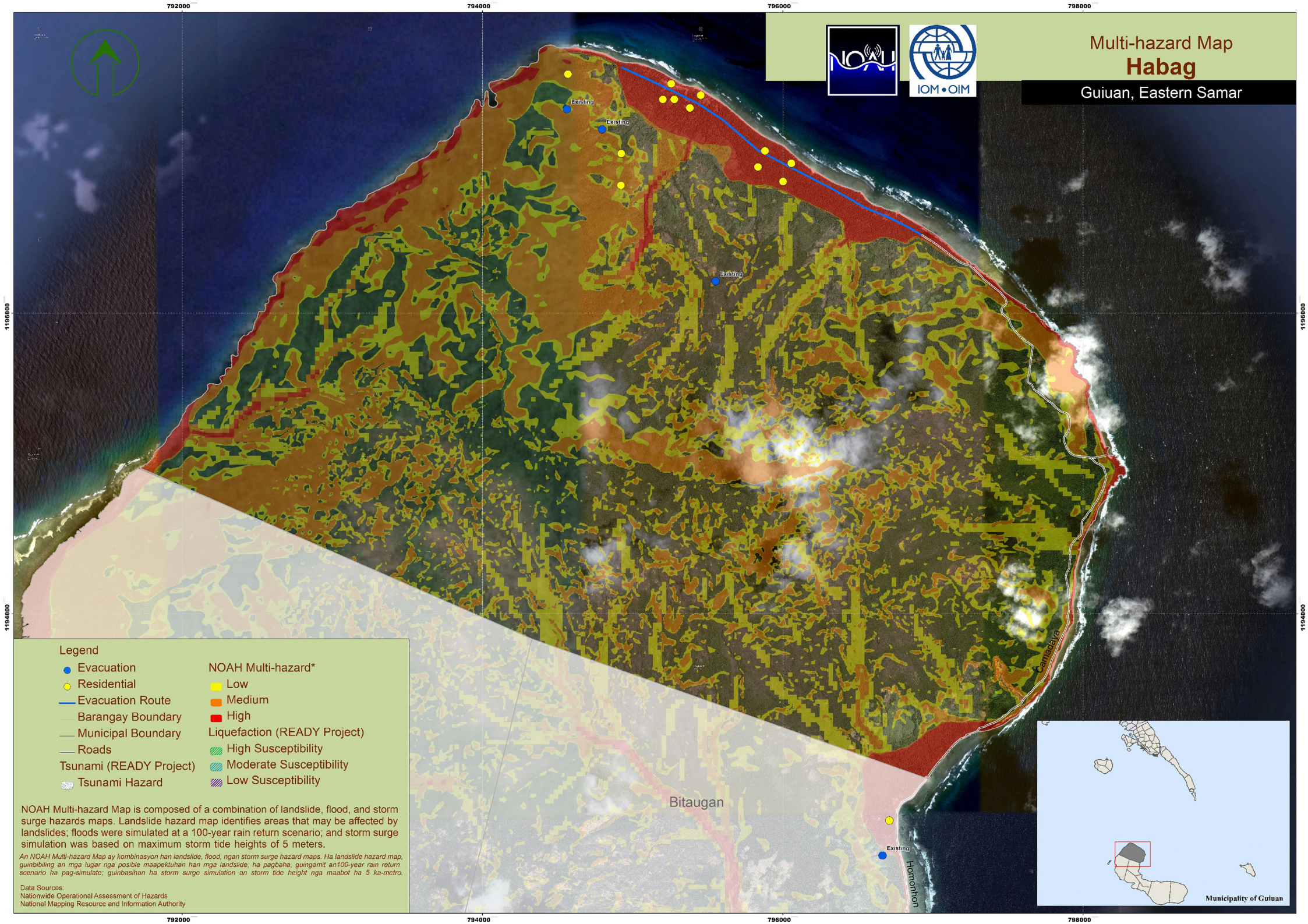




Multi-hazard Map
Habag
 Guiuan, Eastern Samar



Legend

- | | |
|-------------------------|--|
| Evacuation | NOAH Multi-hazard* Low |
| Residential | Medium |
| Evacuation Route | High |
| Barangay Boundary | Liquefaction (READY Project) High Susceptibility |
| Municipal Boundary | Moderate Susceptibility |
| Roads | Low Susceptibility |
| Tsunami (READY Project) | |
| Tsunami Hazard | |

NOAH Multi-hazard Map is composed of a combination of landslide, flood, and storm surge hazards maps. Landslide hazard map identifies areas that may be affected by landslides; floods were simulated at a 100-year rain return scenario, and storm surge simulation was based on maximum storm tide heights of 5 meters.

An NOAH Multi-hazard Map ay kombinasyon han landslide, flood, ngan storm surge hazard maps. Ha landslide hazard map, gumbibiling an mga lugar nga posible maspektuhan han mga landslide, ha pagbaha, gungamit an 100-year rain return scenario ha pag-simulate; guinbasihan ha storm surge simulation an storm tide height nga maabot ha 5 ka-metro.

Data Sources:
 Nationwide Operational Assessment of Hazards
 National Mapping Resource and Information Authority

