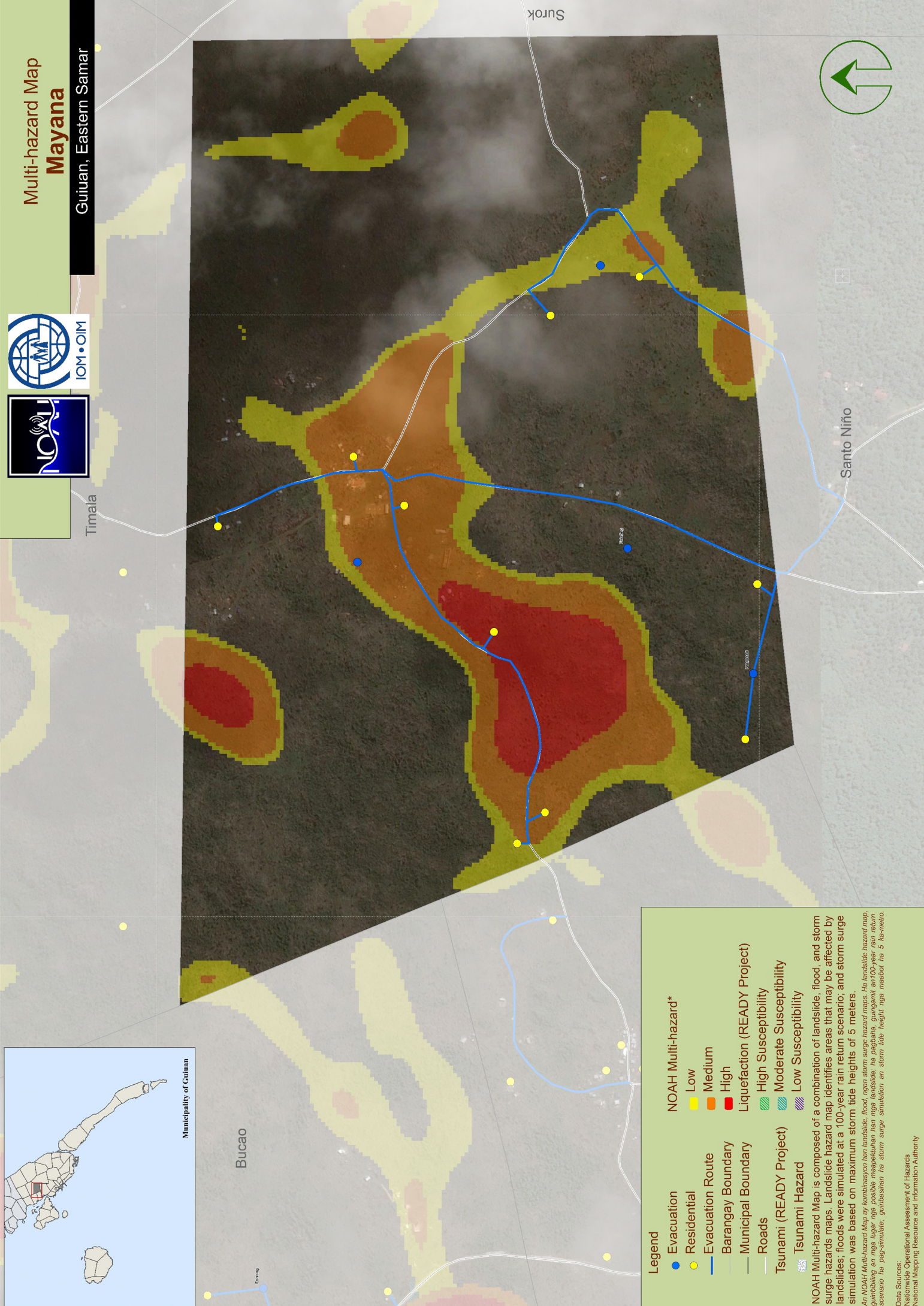
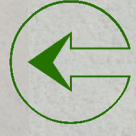


Multi-hazard Map Mayana

Guiuan, Eastern Samar



Legend

- Evacuation (Blue line)
- Residential (Yellow dots)
- Evacuation Route (Blue line)
- Barangay Boundary (Grey dashed line)
- Municipal Boundary (Black solid line)
- Roads (Grey solid line)
- Tsunami (READY Project) (Blue wavy line)
- Tsunami Hazard (Blue wavy line)

NOAH Multi-hazard*

- Low (Yellow)
- Medium (Orange)
- High (Red)

Liquefaction (READY Project)

- High Susceptibility (Green wavy line)
- Moderate Susceptibility (Blue wavy line)
- Low Susceptibility (Purple wavy line)

NOAH Multi-hazard Map is composed of a combination of landslide, flood, and storm surge hazards maps. Landslide hazard map identifies areas that may be affected by landslides; floods were simulated at a 100-year rain return scenario; and storm surge simulation was based on maximum storm tide heights of 5 meters.

An NOAH Multi-Hazard Map ay kombinasyon ng landslide, flood, ngan storm surge hazard maps. Ha landslide hazard map, gumabbing an mga lugar nga posible mapagpakuran han mga landslide; ha pagbabaha, guringamit an 100-year rain return scenario ha pag-simulate; ginhahainhan ha storm surge simulation an storm tide height nga maabot ha 5 ka metro.

Data Sources:
 Nationwide Operational Assessment of Hazards
 National Mapping Resource and Information Authority

Timala

797600

1234000

Bucaco

796800

1234000

1234000

796800

Suruk

Santo Niño

797600

1234000