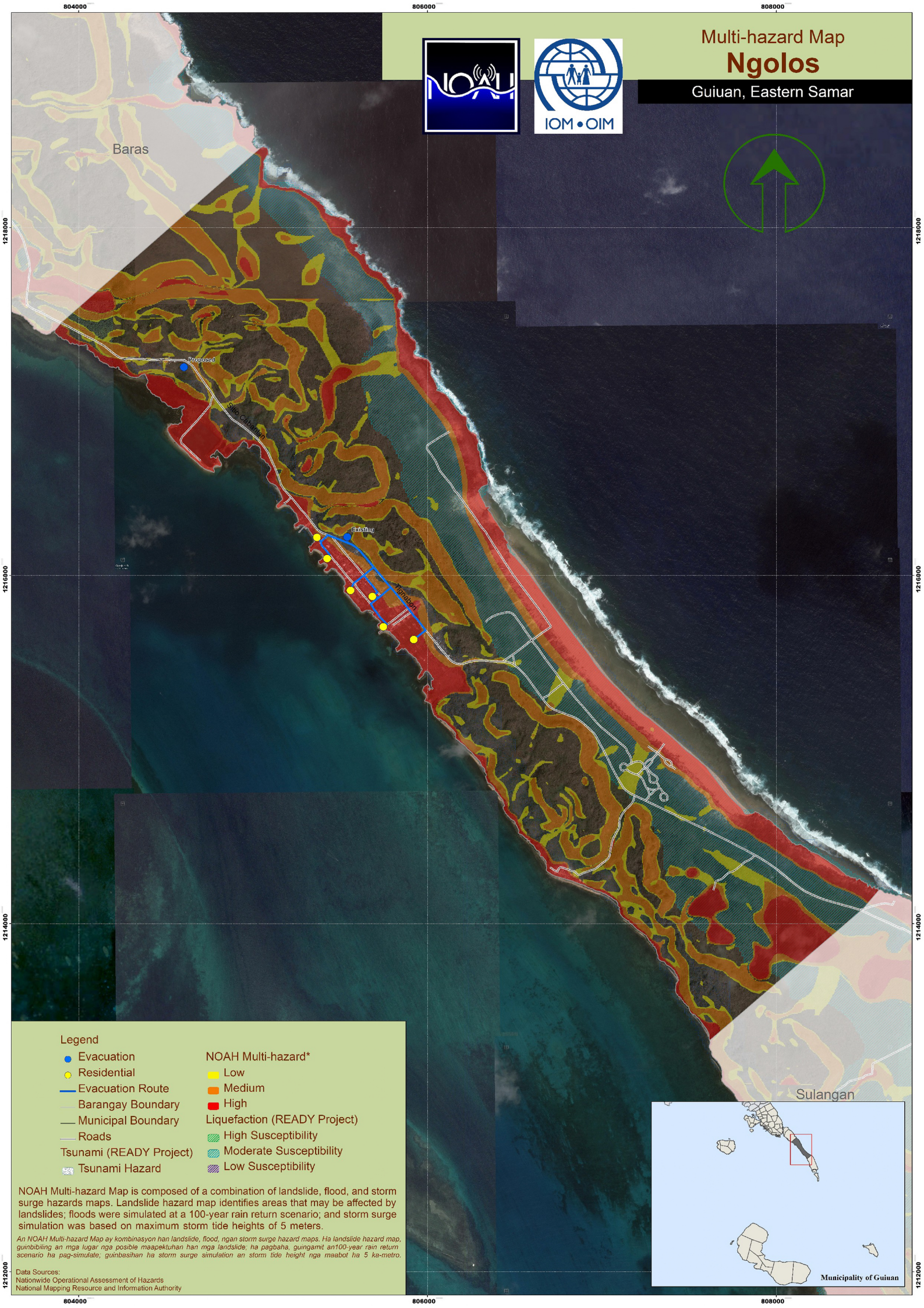


# Multi-hazard Map Ngoelos

Guiuan, Eastern Samar



### Legend

- |                           |                                |
|---------------------------|--------------------------------|
| ● Evacuation              | NOAH Multi-hazard*             |
| ● Residential             | ■ Low                          |
| — Evacuation Route        | ■ Medium                       |
| — Barangay Boundary       | ■ High                         |
| — Municipal Boundary      | ■ Liquefaction (READY Project) |
| — Roads                   | ■ High Susceptibility          |
| — Tsunami (READY Project) | ■ Moderate Susceptibility      |
| ■ Tsunami Hazard          | ■ Low Susceptibility           |

NOAH Multi-hazard Map is composed of a combination of landslide, flood, and storm surge hazards maps. Landslide hazard map identifies areas that may be affected by landslides; floods were simulated at a 100-year rain return scenario; and storm surge simulation was based on maximum storm tide heights of 5 meters.

An NOAH Multi-hazard Map ay kombinasyon han landslide, flood, ngan storm surge hazard maps. Ha landslide hazard map, gumbibiling an mga lugar nga posible maapektuhan han mga landslide; ha pagbaha, gungamt an 100-year rain return scenario ha pag-simulate; guinbashing ha storm surge simulation an storm tide height nga maabot ha 5 ka-metro.

Data Sources:  
 Nationwide Operational Assessment of Hazards  
 National Mapping Resource and Information Authority

Sulangan



Municipality of Guiuan