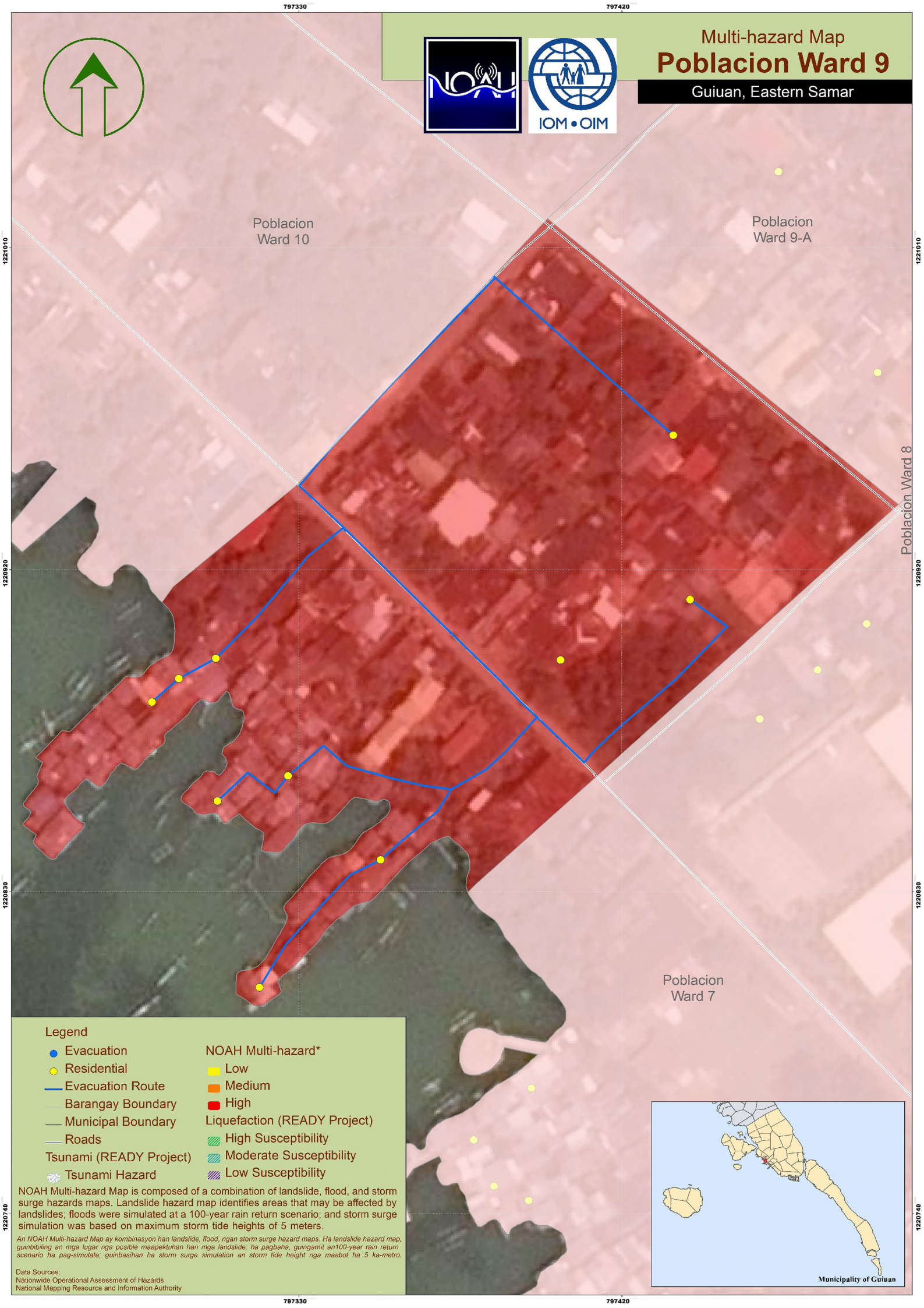




# Multi-hazard Map Poblacion Ward 9

Guiuan, Eastern Samar



Poblacion Ward 10

Poblacion Ward 9-A

Poblacion Ward 8

Poblacion Ward 7

### Legend

- Evacuation
- Residential
- Evacuation Route
- Barangay Boundary
- Municipal Boundary
- Roads
- Tsunami (READY Project)
- Tsunami Hazard
- NOAH Multi-hazard\* Low
- NOAH Multi-hazard\* Medium
- NOAH Multi-hazard\* High
- Liquefaction (READY Project) High Susceptibility
- Liquefaction (READY Project) Moderate Susceptibility
- Liquefaction (READY Project) Low Susceptibility

NOAH Multi-hazard Map is composed of a combination of landslide, flood, and storm surge hazards maps. Landslide hazard map identifies areas that may be affected by landslides; floods were simulated at a 100-year rain return scenario; and storm surge simulation was based on maximum storm tide heights of 5 meters.

An NOAH Multi-hazard Map ay kombinasyon han landslide, flood, ngan storm surge hazard maps. Ha landslide hazard map, gumbibiling an mga lugar nga posible maapektuhan han mga landslide; ha pagbaha, gusingamit an 100-year rain return scenario ha pag-simulate; guinbasihan ha storm surge simulation an storm tide height nga maabot ha 5 ka-metro.

Data Sources:  
 Nationwide Operational Assessment of Hazards  
 National Mapping Resource and Information Authority



Municipality of Guiuan