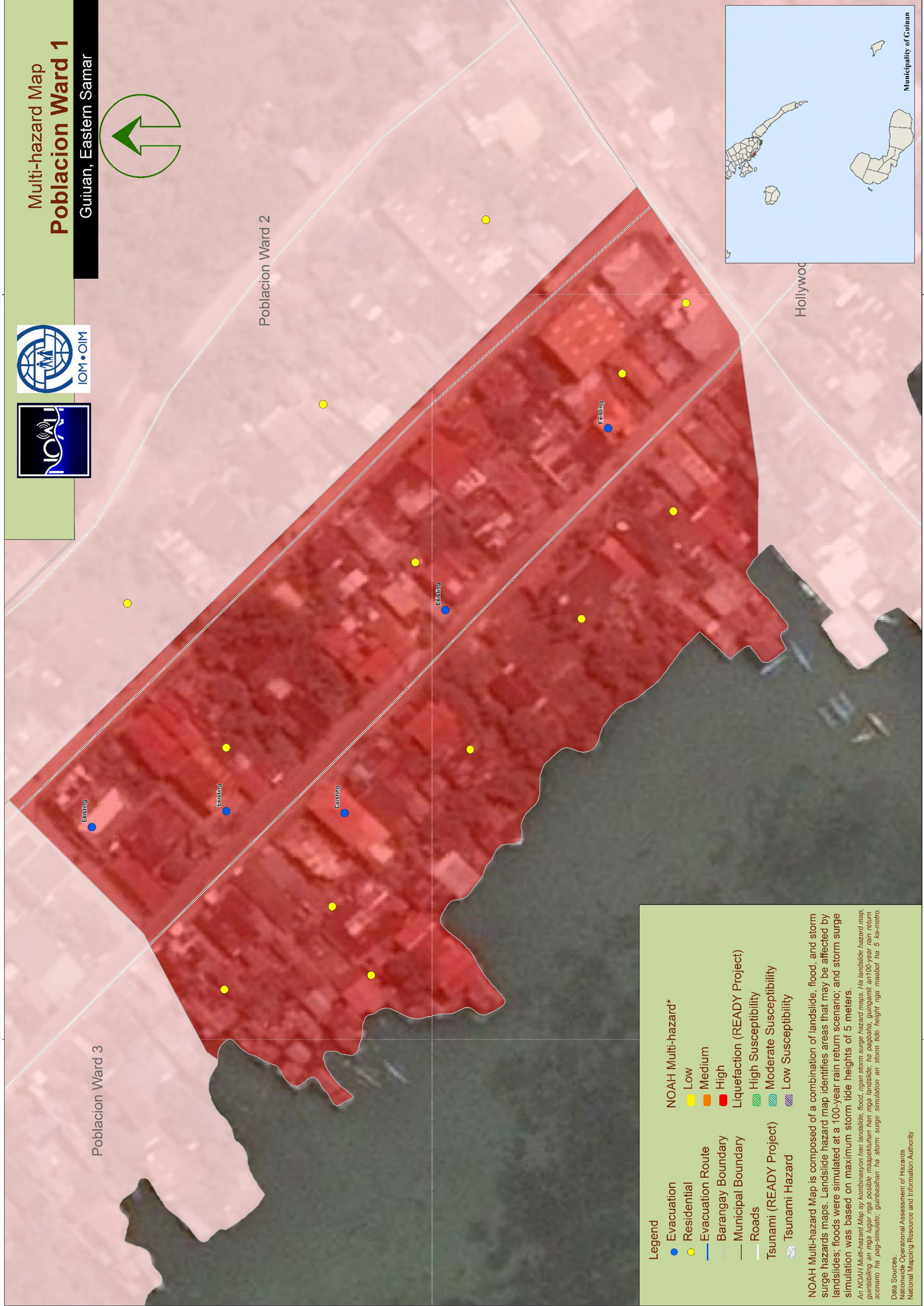
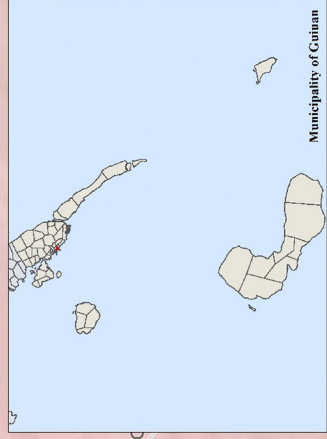
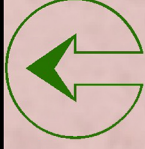


# Multi-hazard Map Poblacion Ward 1

Guiuan, Eastern Samar



**Legend**

- Evacuation (Blue dot)
- Residential (Yellow dot)
- Evacuation Route (Blue line)
- Barangay Boundary (Red line)
- Municipal Boundary (Black line)
- Roads (Grey line)
- Tsunami (READY Project) (Blue wavy line)
- Tsunami Hazard (Blue wavy line)
- NOAH Multi-hazard\*
  - Low (Yellow)
  - Medium (Orange)
  - High (Red)
- Liquefaction (READY Project)
  - High Susceptibility (Green wavy line)
  - Moderate Susceptibility (Blue wavy line)
  - Low Susceptibility (Purple wavy line)

NOAH Multi-hazard Map is composed of a combination of landslide, flood, and storm surge hazards maps. Landslide hazard map identifies areas that may be affected by landslides; floods were simulated at a 100-year rain return scenario; and storm surge simulation was based on maximum storm tide heights of 5 meters.

*An NOAH Multi-Hazard Map ay kombinasyon ng landslide, flood, ngan storm surge hazard maps. Ito landslide hazard map, gumabbing an mga lugar nga posible magapektahan han mga landslide; ha pagbaha, guingamit an 100-year rain return scenario ha pag-simulate, gumabbing ha storm surge simulation an storm tide height inabot ha 5 Asentiro.*

Data Sources:  
 National Operational Assessment of Hazards  
 National Mapping Resource and Information Authority

798000

797800

798000

797800

1220400

1220400