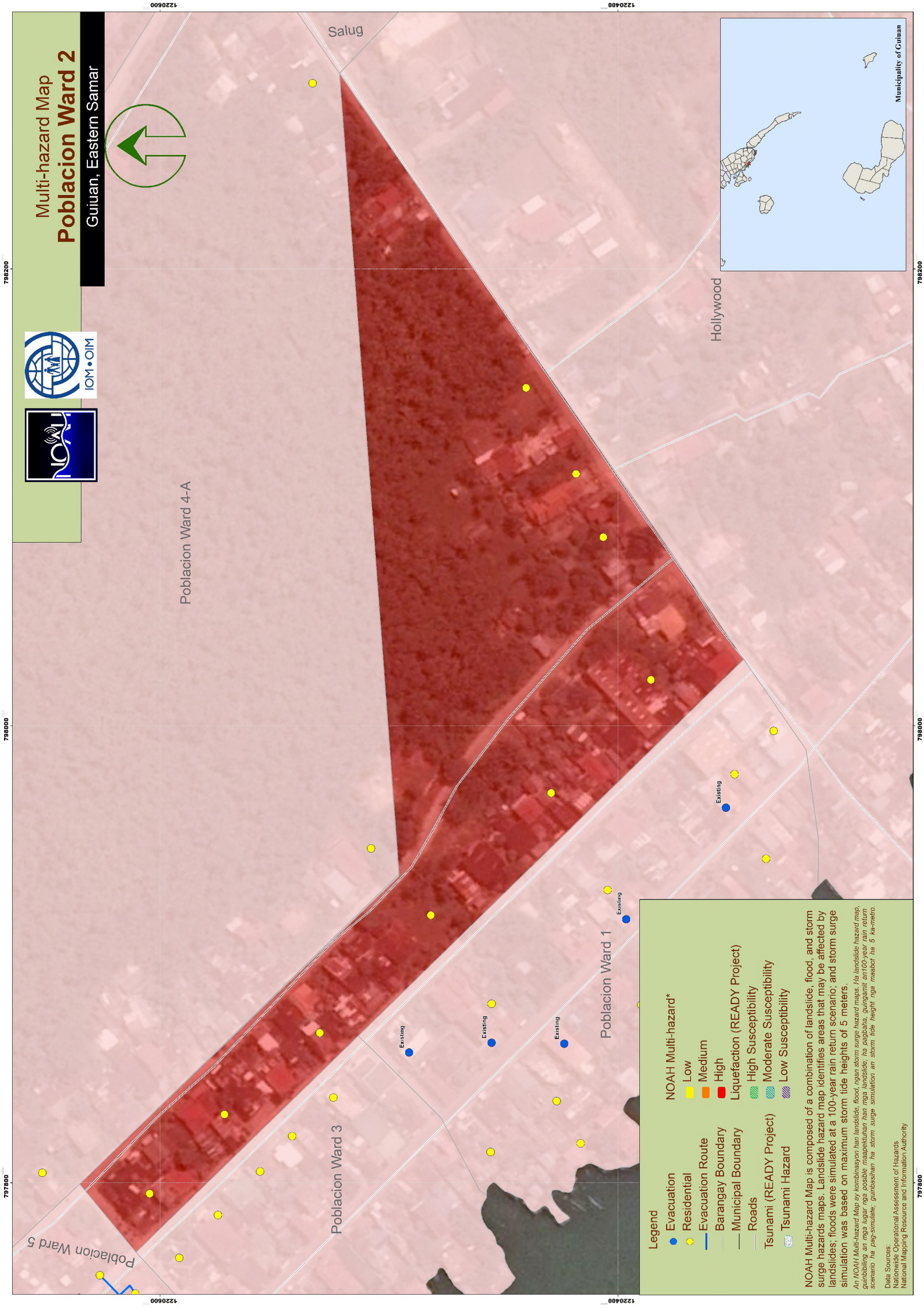
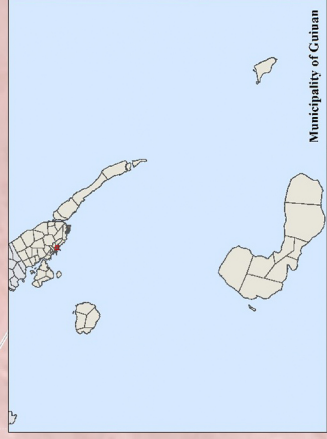
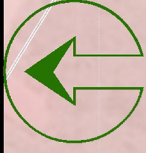


# Multi-hazard Map Poblacion Ward 2

Guiuan, Eastern Samar



Poblacion Ward 4-A

Salug

Hollywood

Poblacion Ward 3

Poblacion Ward 1

Poblacion Ward 5

**Legend**

- Evacuation
- Residential
- Evacuation Route
- Barangay Boundary
- Municipal Boundary
- Roads
- Tsunami (READY Project)
- Tsunami Hazard
- NOAH Multi-hazard\*
  - Low
  - Medium
  - High
- Liquefaction (READY Project)
  - High Susceptibility
  - Moderate Susceptibility
  - Low Susceptibility

NOAH Multi-hazard Map is composed of a combination of landslide, flood, and storm surge hazards maps. Landslide hazard map identifies areas that may be affected by landslides; floods were simulated at a 100-year rain return scenario; and storm surge simulation was based on maximum storm tide heights of 5 meters.

An NOAH Multi-hazard Map ay kombinasyon han landslide, flood, nagan storm surge hazard maps. Ha landslide hazard map, gumbiling an mga lugar nga possible maapektuhan han mga landslide, ha pagbaha, gumbiling an 100-year rain return scenario ha pag-simulate, gumbiling an storm surge simulation an storm tide height nga maabot ha 5 ka-metro.

Data Sources:  
 National Operational Assessment of Hazards  
 National Disaster Preparedness Planning Center  
 National Mapping Resource and Information Authority

782200

788000

797800

782200

788000

797800

1220600

1220400