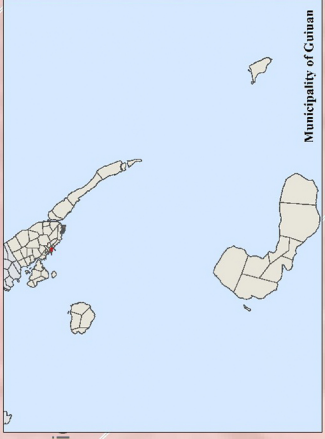
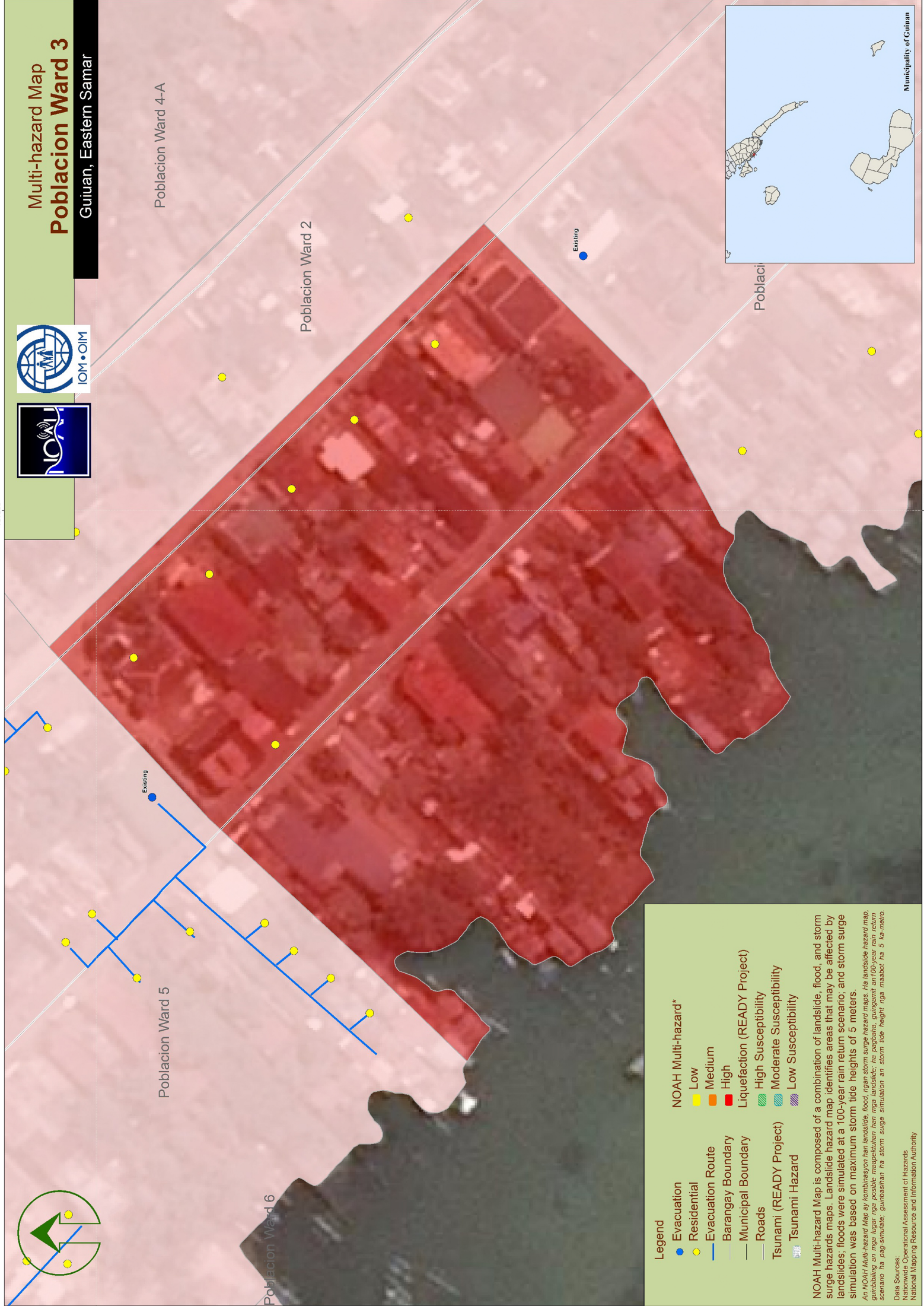
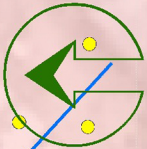


Multi-hazard Map Poblacion Ward 3

Guiuan, Eastern Samar



Legend

- Evacuation (Blue line)
- Residential (Yellow circle)
- Evacuation Route (Blue line)
- Barangay Boundary (Dashed line)
- Municipal Boundary (Dotted line)
- Roads (Grey line)
- Tsunami (READY Project) (Blue wavy line)
- Tsunami Hazard (Blue wavy line)

NOAH Multi-hazard*

- Low (Yellow circle)
- Medium (Orange circle)
- High (Red circle)

Liquefaction (READY Project)

- High Susceptibility (Red wavy line)
- Moderate Susceptibility (Orange wavy line)
- Low Susceptibility (Yellow wavy line)

NOAH Multi-hazard Map is composed of a combination of landslide, flood, and storm surge hazards maps. Landslide hazard map identifies areas that may be affected by landslides; floods were simulated at a 100-year rain return scenario; and storm surge simulation was based on maximum storm tide heights of 5 meters.

An NOAH Multi-hazard Map ay kombinasyon han landslide flood, ogan storm surge hazard maps. Ha landslide hazard map, gumbablan an mga lugar nga possible maapekahan han nga landslide; ha pagbabala, gumbablan an 100-year rain return scenario ha pag-simulate; gumbablan ha storm surge simulation an storm tide height nga maabot ha 5 ka-metro.

Data Sources:
National Operational Assessment of Hazards
National Mapping Resource and Information Authority

757800

757800

1220600

1220600