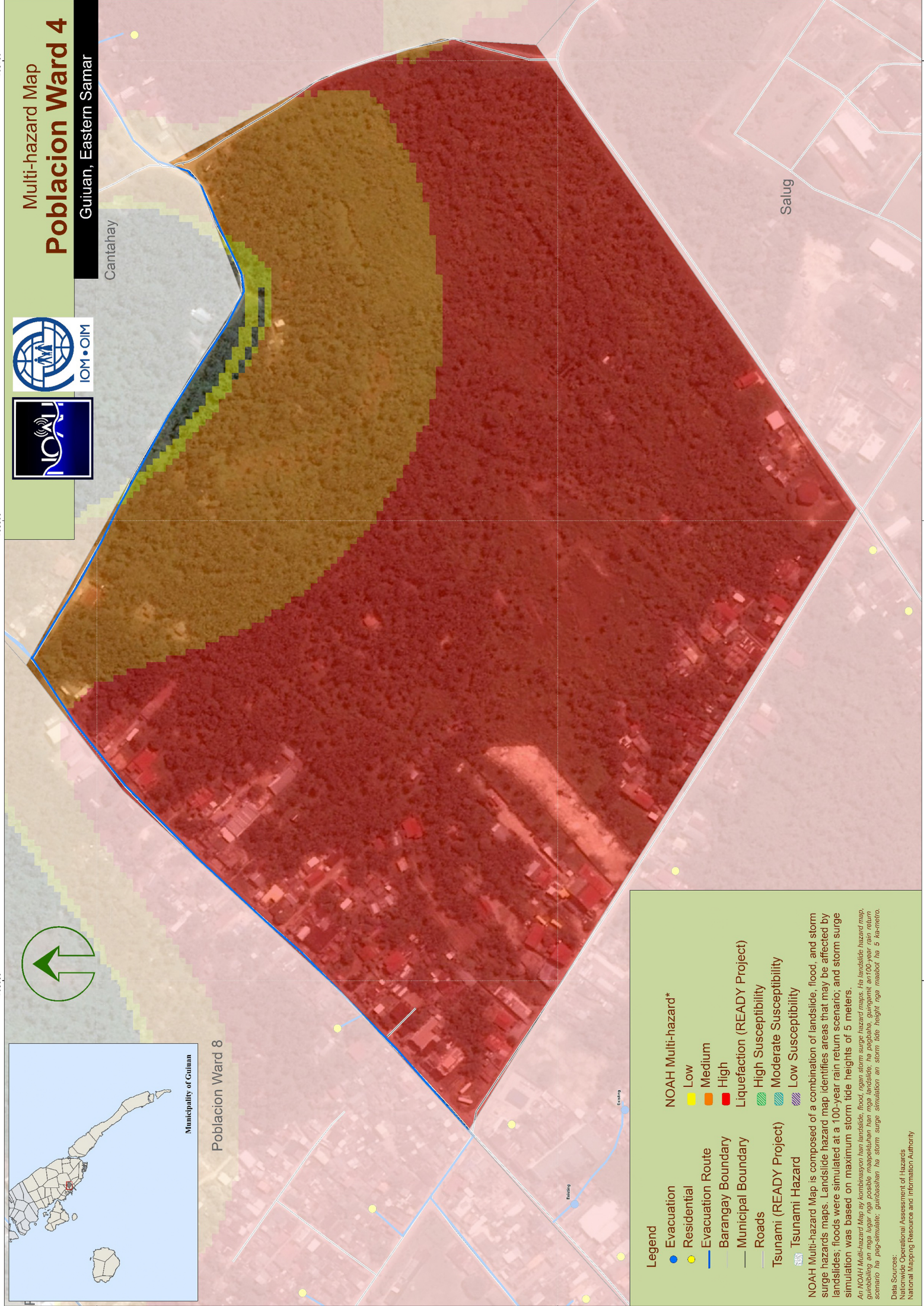


Municipality of Guiuan
Poblacion Ward 8



Multi-hazard Map
Poblacion Ward 4
Guiuan, Eastern Samar
Cantahay



Legend

- Evacuation
- Residential
- Evacuation Route
- Barangay Boundary
- Municipal Boundary
- Roads
- Tsunami (READY Project)
- Tsunami Hazard
- NOAH Multi-hazard*
 - Low
 - Medium
 - High
- Liquefaction (READY Project)
 - High Susceptibility
 - Moderate Susceptibility
 - Low Susceptibility

NOAH Multi-hazard Map is composed of a combination of landslide, flood, and storm surge hazards maps. Landslide hazard map identifies areas that may be affected by landslides; floods were simulated at a 100-year rain return scenario; and storm surge simulation was based on maximum storm tide heights of 5 meters.

An NOAH Multi-Hazard Map ay kombinasyon ng landslide, flood, ngan storm surge hazard maps. Ha landslide hazard map, gumagamit an mga lugar niga posible mapagpakitan han mga landslide; ha pagbabaha, guringamit an 100-year rain return scenario ha pag-simulate; guringamit an storm surge simulation an storm tide height niga mababot ha 5 ka metro.

Data Sources:
National Operational Assessment of Hazards
National Mapping Resource and Information Authority