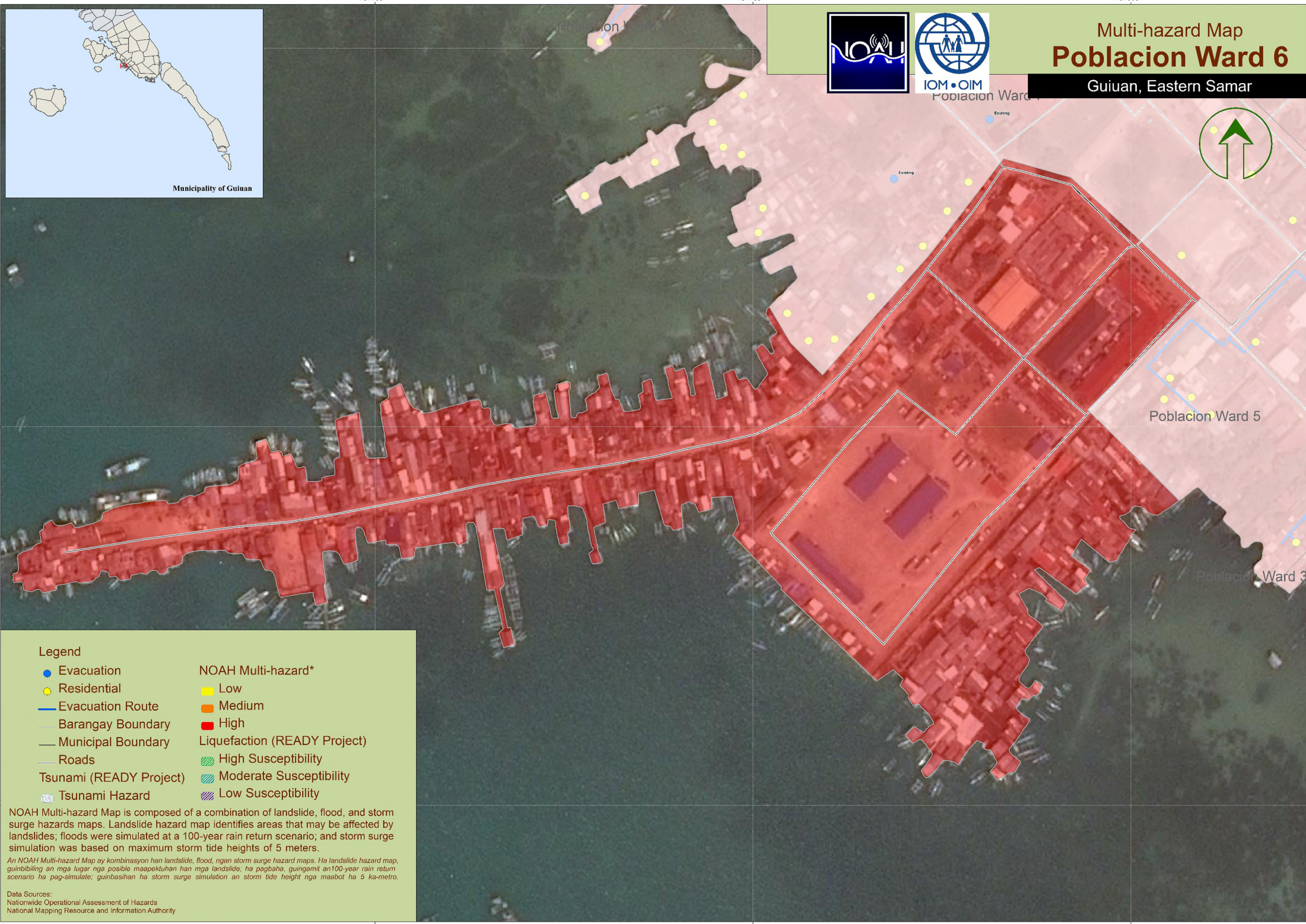


Multi-hazard Map Poblacion Ward 6

Guiuan, Eastern Samar



Legend

Evacuation	NOAH Multi-hazard* Low
Residential	NOAH Multi-hazard* Medium
Evacuation Route	NOAH Multi-hazard* High
Barangay Boundary	Liquefaction (READY Project) High Susceptibility
Municipal Boundary	Liquefaction (READY Project) Moderate Susceptibility
Roads	Liquefaction (READY Project) Low Susceptibility
Tsunami (READY Project)	
Tsunami Hazard	

NOAH Multi-hazard Map is composed of a combination of landslide, flood, and storm surge hazards maps. Landslide hazard map identifies areas that may be affected by landslides; floods were simulated at a 100-year rain return scenario; and storm surge simulation was based on maximum storm tide heights of 5 meters.

An NOAH Multi-hazard Map ay kombinasyon han landslide, flood, ngan storm surge hazard maps. Ha landslide hazard map, quinbibiling an mga lugar nga posible maapektuhan han mga landslide; ha pagbaha, guingmit an 100-year rain return scenario ha pag-simulate, quinbasihan ha storm surge simulation an storm tide height nga maabot ha 5 ka-metro.

Data Sources:
 Nationwide Operational Assessment of Hazards
 National Mapping Resource and Information Authority