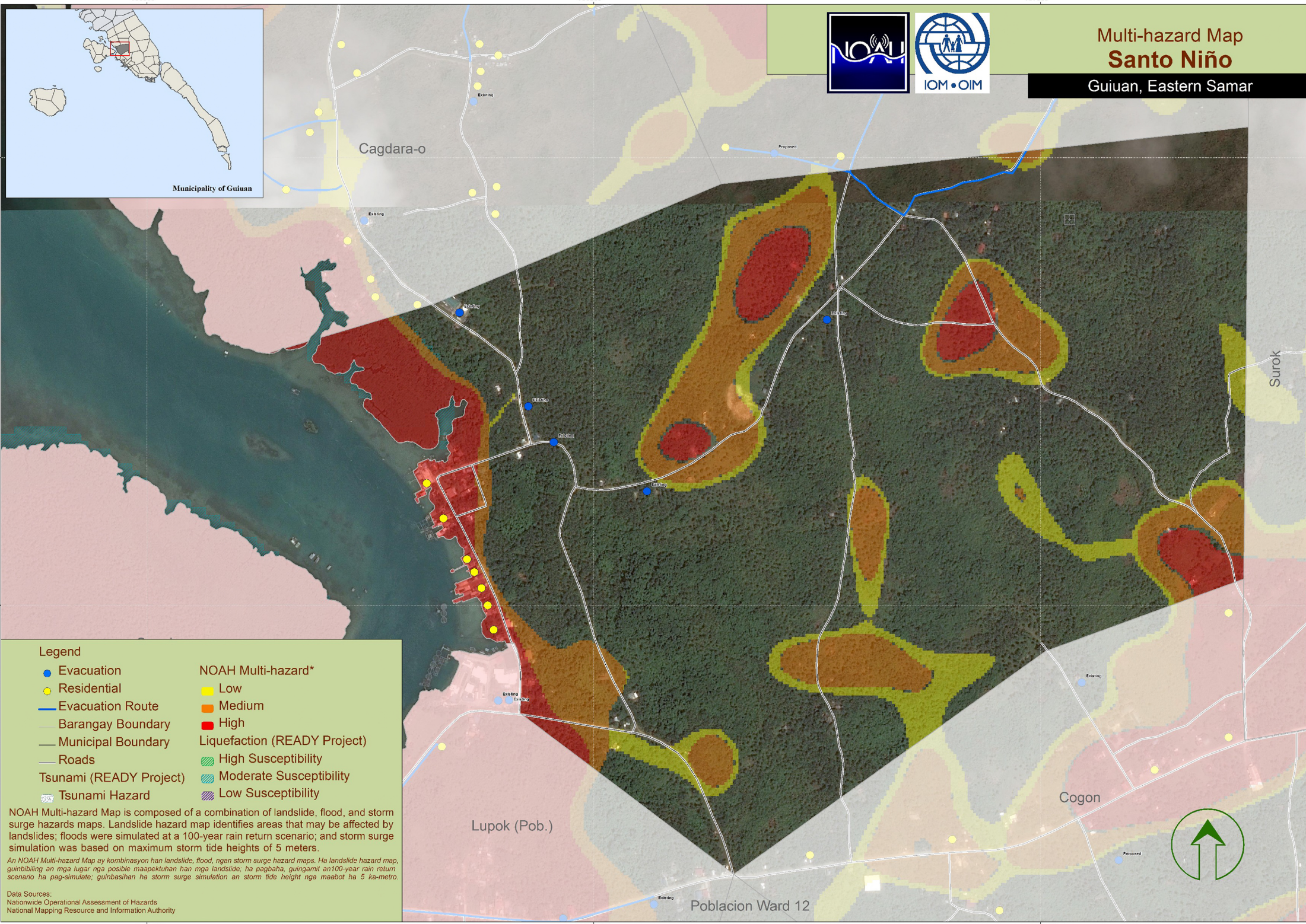


Multi-hazard Map
Santo Niño
 Guiuan, Eastern Samar



Legend

- Evacuation
- Residential
- Evacuation Route
- Barangay Boundary
- Municipal Boundary
- Roads
- Tsunami (READY Project)
- ☐ Tsunami Hazard

NOAH Multi-hazard*

- Low
- Medium
- High

Liquefaction (READY Project)

- ▨ High Susceptibility
- ▨ Moderate Susceptibility
- ▨ Low Susceptibility

NOAH Multi-hazard Map is composed of a combination of landslide, flood, and storm surge hazards maps. Landslide hazard map identifies areas that may be affected by landslides; floods were simulated at a 100-year rain return scenario; and storm surge simulation was based on maximum storm tide heights of 5 meters.

An NOAH Multi-hazard Map ay kombinasyon han landslide, flood, ngen storm surge hazard maps. Ha landslide hazard map, quimbibiling an mga lugar nga posible maapektuhan han mga landslide; ha pagbaha, guingamit an 100-year rain return scenario ha pag-simulate, guinbasihan ha storm surge simulation an storm tide height nga maabot ha 5 ka-metro.

Data Sources:
 Nationwide Operational Assessment of Hazards
 National Mapping Resource and Information Authority



1222400

1222400

1222400

1222400

796000

796800

797600