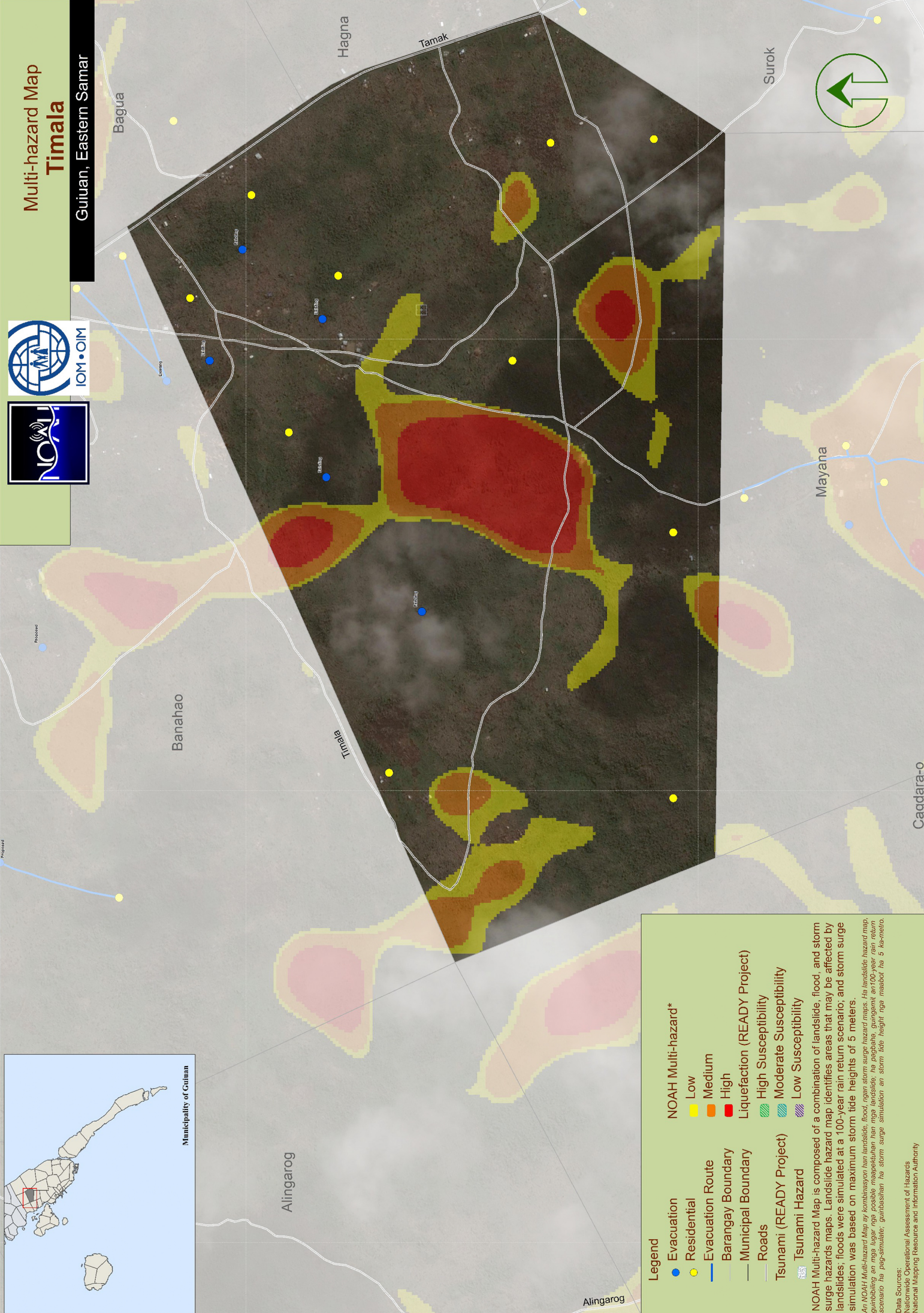


# Multi-hazard Map Timala

Guiuan, Eastern Samar



**Legend**

- Evacuation (Blue line)
- Residential (Yellow dots)
- Evacuation Route (Blue line)
- Barangay Boundary (White line)
- Municipal Boundary (Grey line)
- Roads (Grey line)
- Tsunami (READY Project) (Blue wavy line)
- Tsunami Hazard (Blue wavy line)

**NOAH Multi-hazard\***

- Low (Yellow)
- Medium (Orange)
- High (Red)

**Liquefaction (READY Project)**

- High Susceptibility (Green wavy line)
- Moderate Susceptibility (Blue wavy line)
- Low Susceptibility (Purple wavy line)

**NOAH Multi-hazard Map is composed of a combination of landslide, flood, and storm surge hazards maps. Landslide hazard map identifies areas that may be affected by landslides; floods were simulated at a 100-year rain return scenario; and storm surge simulation was based on maximum storm tide heights of 5 meters.**

**An NOAH Multi-Hazard Map by kombinasyon ng landslide, flood, ngan storm surge hazard maps. Ito landslide hazard map, gumabbing an mga lugar niga posible mangyayarihan han mga landslide, ha pagbabaha, guingamit an 100-year rain return scenario ha pag-simulate, guinabaitan ha storm surge simulation an storm tide height nagaabot ha 5 ka metro.**

**Data Sources:**  
 Nationwide Operational Assessment of Hazards  
 National Mapping Resource and Information Authority

796000

796000

797500

1224000

796000

796000

797500

1224000