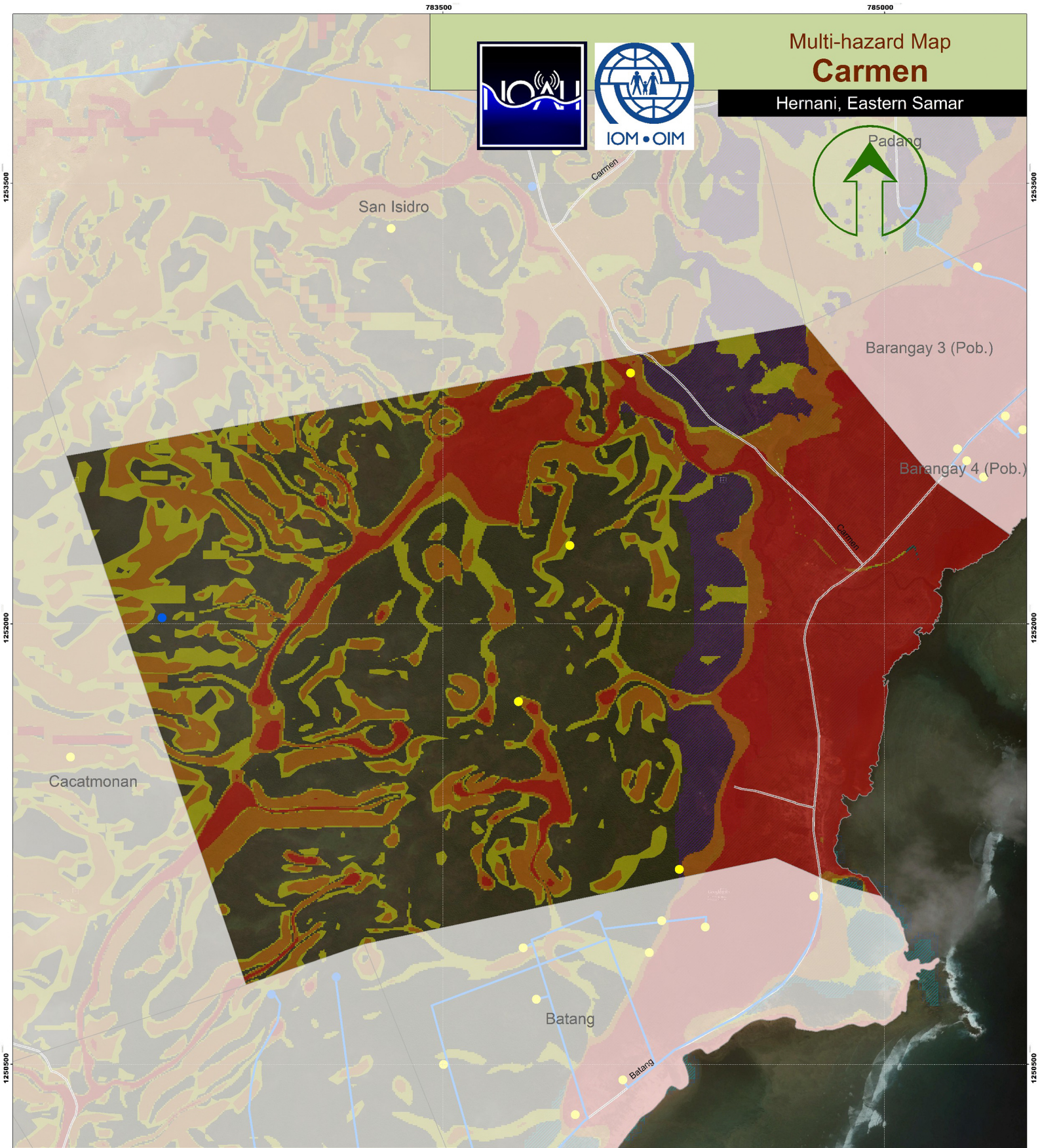
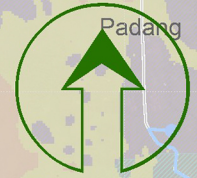


# Multi-hazard Map Carmen

Hernani, Eastern Samar



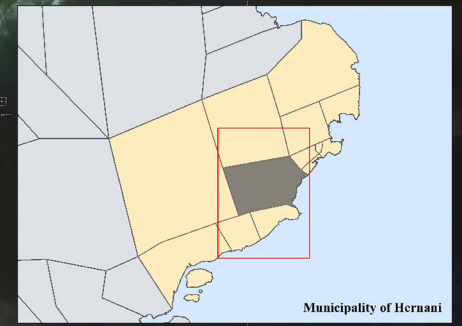
### Legend

- Evacuation
  - Residential
  - Evacuation Route
  - Barangay Boundary
  - Municipal Boundary
  - Roads
  - Tsunami (READY Project)
  - Tsunami Hazard
- NOAH Multi-hazard\***
  - Low
  - Medium
  - High
- Liquefaction (READY Project)**
  - High Susceptibility
  - Moderate Susceptibility
  - Low Susceptibility

NOAH Multi-hazard Map is composed of a combination of landslide, flood, and storm surge hazards maps. Landslide hazard map identifies areas that may be affected by landslides; floods were simulated at a 100-year rain return scenario; and storm surge simulation was based on maximum storm tide heights of 5 meters.

An NOAH Multi-hazard Map ay kombinasyon han landslide, flood, ngan storm surge hazard maps. Ha landslide hazard map, guinbibiling an mga lugar nga possible maapektuhan han mga landslide; ha pagbaha, quinggamit an 100-year rain return scenario ha pag-simulate; guinbasahan ha storm surge simulation an storm tide height nga maabot ha 5 ka-metro.

Data Sources:  
 Nationwide Operational Assessment of Hazards  
 National Mapping Resource and Information Authority



Municipality of Hernani

783500 785000 1253500 1253000 1252000 1250500 1250000