

Multi-hazard Map Banuyo

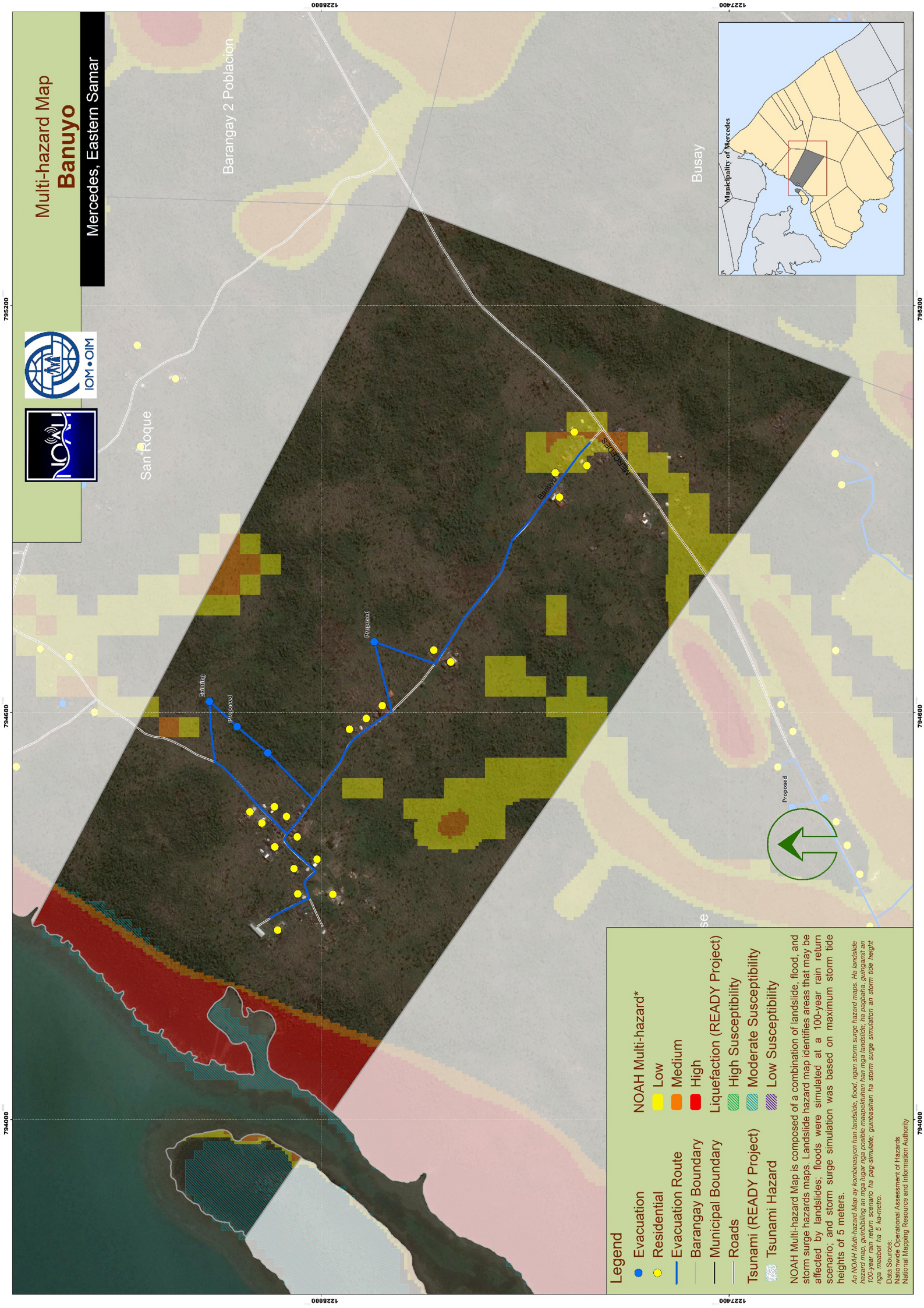
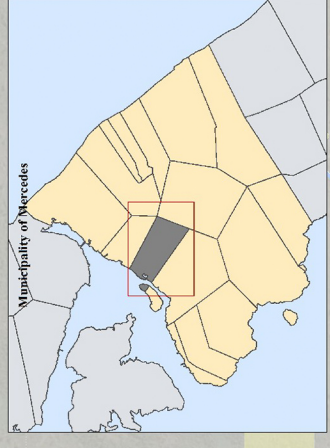
Mercedes, Eastern Samar



San Roque

Barangay 2 Poblacion

Busay



Legend

- Evacuation
- Residential
- Evacuation Route
- Barangay Boundary
- Municipal Boundary
- Roads
- Tsunami (READY Project)
- Tsunami Hazard

NOAH Multi-hazard*

- Low
- Medium
- High

Liquefaction (READY Project)

- High Susceptibility
- Moderate Susceptibility
- Low Susceptibility

NOAH Multi-hazard Map is composed of a combination of landslide, flood, and storm surge hazards maps. Landslide hazard map identifies areas that may be affected by landslides; floods were simulated at a 100-year rain return scenario; and storm surge simulation was based on maximum storm tide heights of 5 meters.

An NOAH Multi-hazard Map ay kombinasyon han landslide, flood, ngan storm surge hazard maps. Ha landslide hazard map, gumibbling an mga lugar nga possible maapektuhan han mga landslide, ha pagbabala, guingamit an 100-year rain return scenario ha pag-simulate; gumibashan ha storm surge simulation an storm tide height nga maabot ha 5 han-metro.

Data Sources:
 Nationwide Operational Assessment of Hazards
 National Mapping Resources and Information Authority



795200

794600

794000

795200

794600

794000

