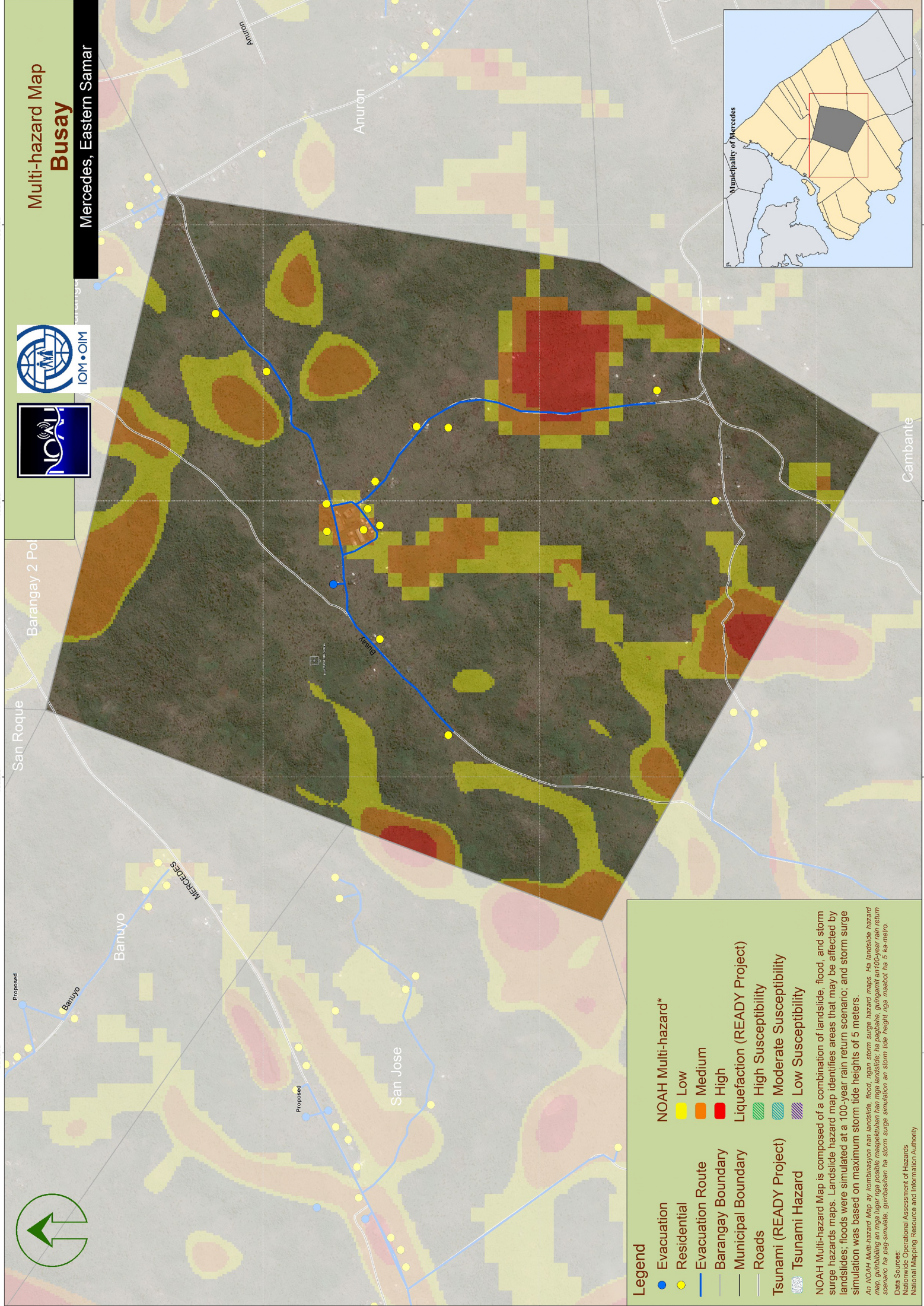
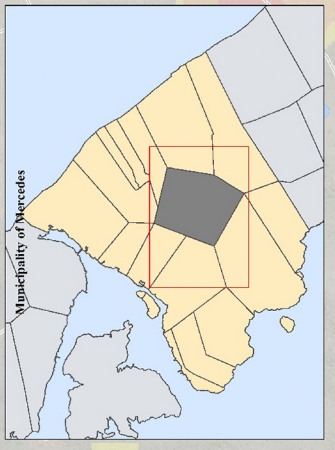




Multi-hazard Map Busay

Mercedes, Eastern Samar



Legend

- Evacuation (Blue line)
- Residential (Yellow dots)
- Evacuation Route (Blue line)
- Barangay Boundary (Grey line)
- Municipal Boundary (Black line)
- Roads (Grey line)
- Tsunami (READY Project) (Blue wavy line)
- Tsunami Hazard (Blue wavy line)

NOAH Multi-hazard*

- Low (Yellow)
- Medium (Orange)
- High (Red)

Liquefaction (READY Project)

- High Susceptibility (Green wavy line)
- Moderate Susceptibility (Blue wavy line)
- Low Susceptibility (Purple wavy line)

NOAH Multi-hazard Map is composed of a combination of landslide, flood, and storm surge hazards maps. Landslide hazard map identifies areas that may be affected by landslides; floods were simulated at a 100-year rain return scenario; and storm surge simulation was based on maximum storm tide heights of 5 meters.

An NOAH Multi-hazard map ay kombinasyon han landslide, flood, ngan storm surge hazard maps. Ha landslide hazard map, gumabang an mga lugar nga posible magapangan han mga landslide; ha pagpapali, gumabant an mga year rain return scenario ha pag simula, ginabangan ha storm surge simulation an storm tide height nga madabot ha 5 metros.

Data Sources:
National Operational Assessment of Hazards
National Mapping, Resource and Information Authority

1226200 1227400 1228600 754600 755200 755800 756400

1226200 1227400 1228600 754600 755200 755800 756400