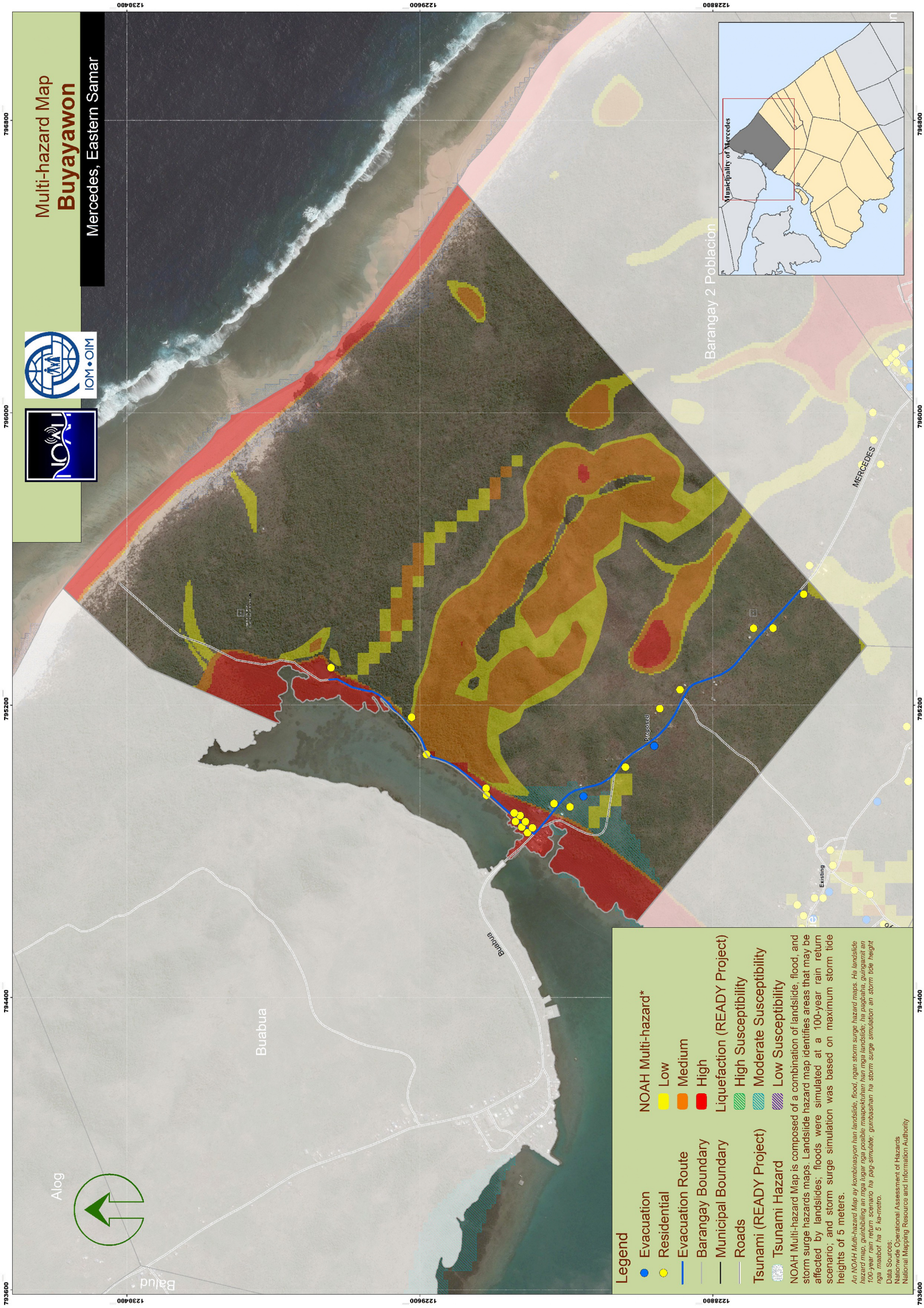


# Multi-hazard Map Buyayawon

Mercedes, Eastern Samar



**Legend**

- Evacuation
- Residential
- Evacuation Route
- Barangay Boundary
- Municipal Boundary
- Roads

**NOAH Multi-hazard\***

- Low
- Medium
- High

**Liquefaction (READY Project)**

- High Susceptibility
- Moderate Susceptibility
- Low Susceptibility

**Tsunami (READY Project)**

- Tsunami Hazard

**NOAH Multi-hazard Map** is composed of a combination of landslide, flood, and storm surge hazards maps. Landslide hazard map identifies areas that may be affected by landslides; floods were simulated at a 100-year rain return scenario; and storm surge simulation was based on maximum storm tide heights of 5 meters.

*An NOAH Multi-hazard Map ay kombinasyon han landslide, flood, ngan storm surge hazard maps. Ha landslide hazard map, gumibbling an mga lugar nga possible maapektuhan han mga landslide, ha pagbabala, guingarin an 100-year rain return scenario ha pag-simulate; gumibashan ha storm surge simulation an storm tide height nga mababot ha 5 han-metro.*

**Data Sources:**  
 Nationwide Operational Assessment of Hazards  
 National Mapping Resources and Information Authority

795200

795200

795200

795200

795200

1239600

1239600

1239600

794400

794400

794400

794400

794400