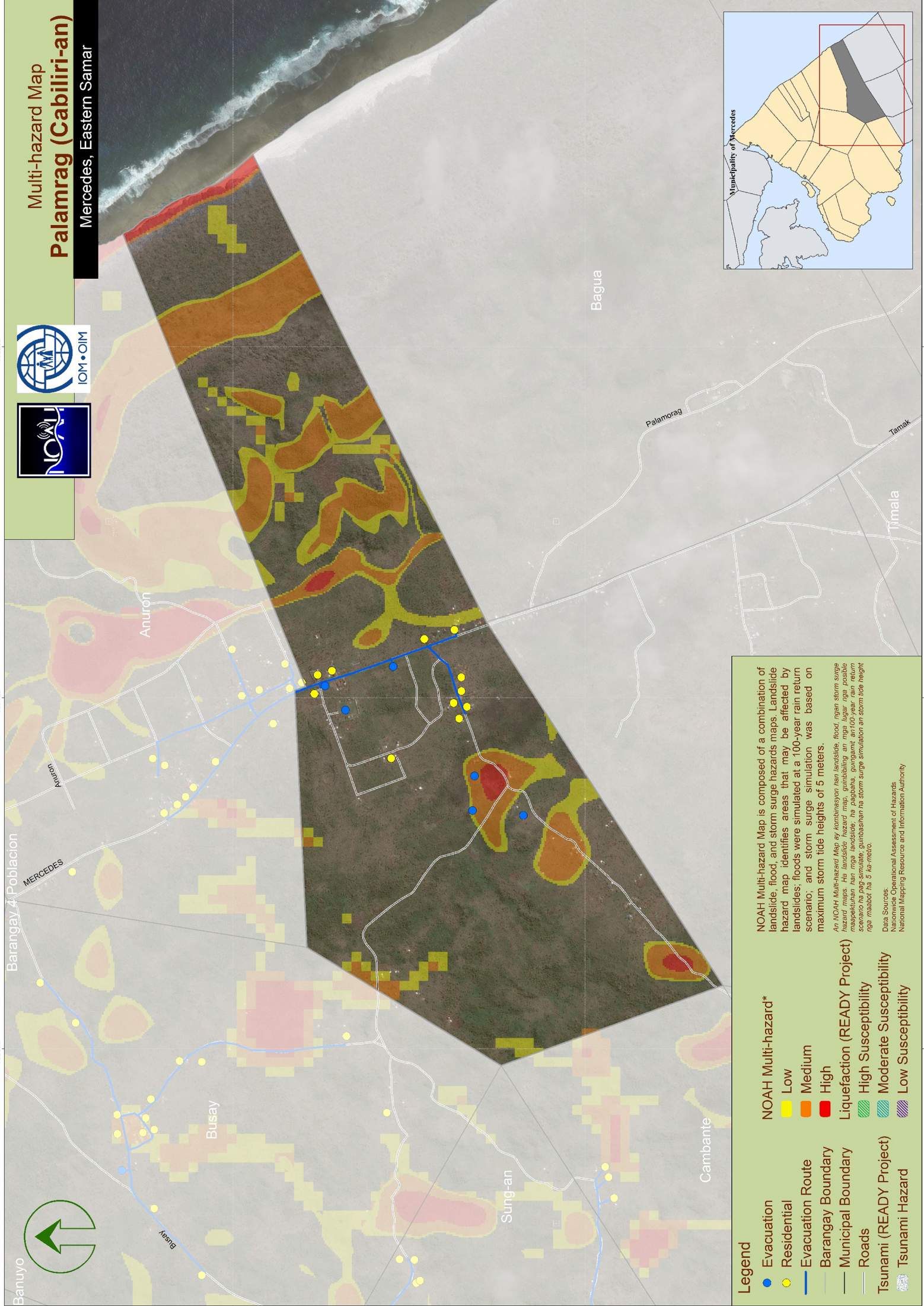


Multi-hazard Map
Palamrag (Cabiliri-an)
 Mercedes, Eastern Samar



Legend

- Evacuation
- Residential
- Evacuation Route
- Barangay Boundary
- Municipal Boundary
- Roads
- Tsunami (READY Project)
- Tsunami Hazard

NOAH Multi-hazard*

- Low
- Medium
- High

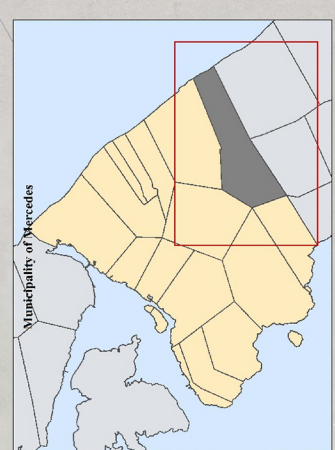
Liquefaction (READY Project)

- High Susceptibility
- Moderate Susceptibility
- Low Susceptibility

NOAH Multi-hazard Map is composed of a combination of landslide, flood, and storm surge hazards maps. Landslide hazard map identifies areas that may be affected by landslides; floods were simulated at a 100-year rain return scenario; and storm surge simulation was based on maximum storm tide heights of 5 meters.

An NOAH Multi-hazard Map ay kombinasyon ng landslide, flood, ngan storm surge hazard maps. Ng landslide hazard map, ginibabing an mga lugar nge posible maapektuhan ng mga landslide; ha pagbaha, gungamt an 100-year rain return scenario ha pag-simulate; ginibabing an storm surge simulation an storm tide height nge maabot ha 5 ka metro.

Data Sources:
 National Operational Assessment of Hazards
 National Mapping Resource and Information Authority



795000 797100 798200 1225900 1225900 1225900