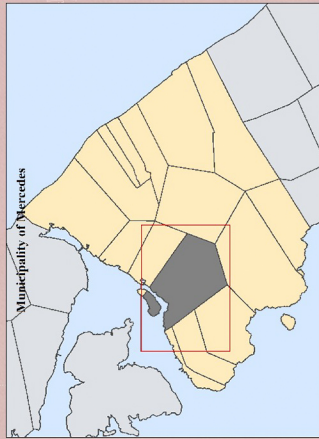
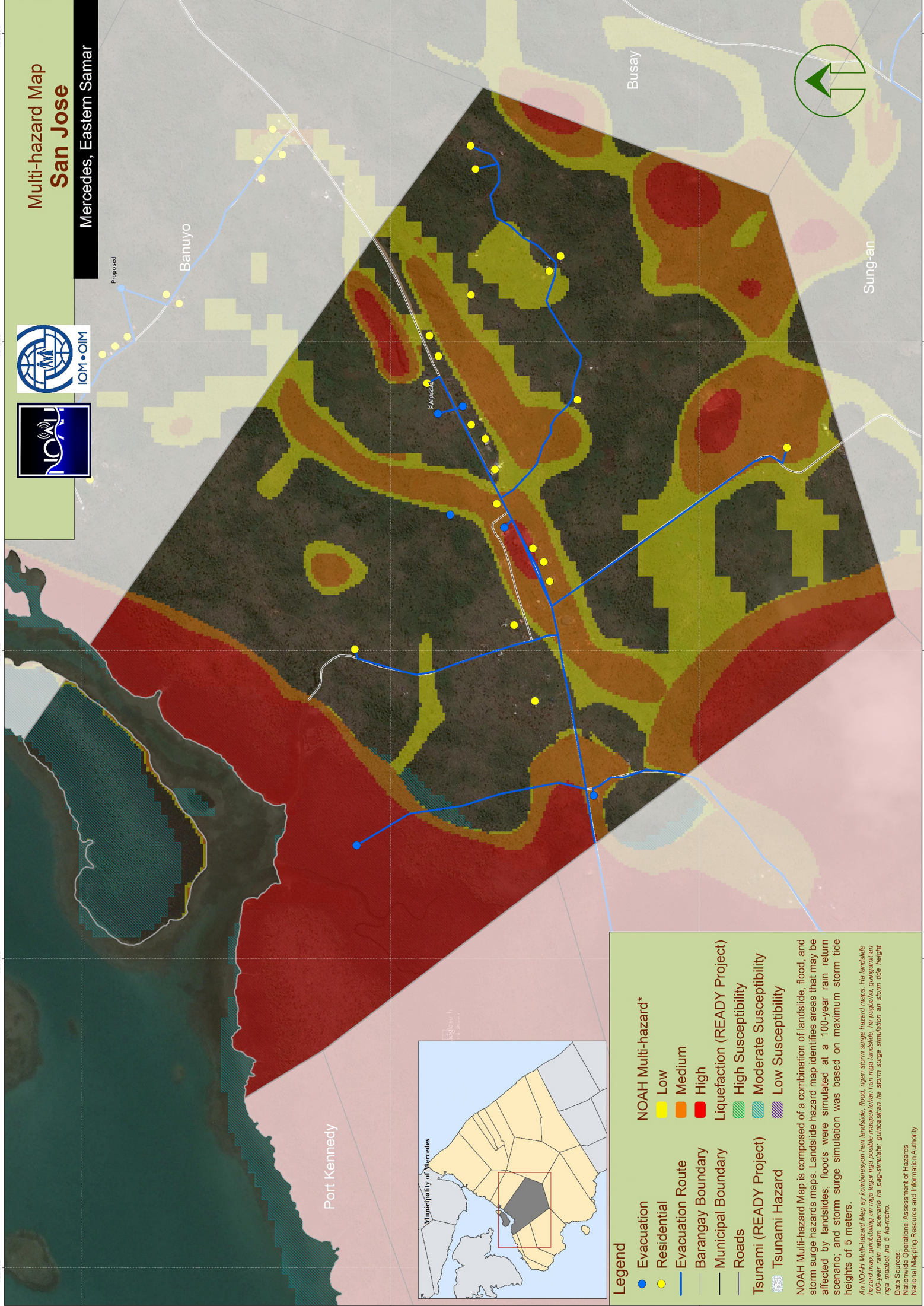


# Multi-hazard Map San Jose

Mercedes, Eastern Samar



**Legend**

- Evacuation (Blue line)
- Residential (Yellow)
- Evacuation Route (Blue line)
- Barangay Boundary (Grey line)
- Municipal Boundary (Black line)
- Roads (Grey line)

**NOAH Multi-hazard\***

- Low (Yellow)
- Medium (Orange)
- High (Red)

**Liquefaction (READY Project)**

- High Susceptibility (Green hatched)
- Moderate Susceptibility (Blue hatched)
- Low Susceptibility (Purple hatched)

**Tsunami (READY Project)**

- Tsunami Hazard (Blue hatched)

NOAH Multi-hazard Map is composed of a combination of landslide, flood, and storm surge hazards maps. Landslide hazard map identifies areas that may be affected by landslides; floods were simulated at a 100-year rain return scenario; and storm surge simulation was based on maximum storm tide heights of 5 meters.

*An NOAH Multi-hazard Map ay kombinasyon han landslide, flood, ngan storm surge hazard maps. Ha landslide hazard map, gumibbling an mga lugar nga possible maapektuhan han mga landslide, ha pagbabala, guingarin an 100-year rain return scenario ha pag-simulate; gumibsshahan ha storm surge simulation an storm tide height nga maabot ha 5 han-metro.*

Data Sources:  
National Operational Assessment of Hazards  
National Mapping Resources and Information Authority

