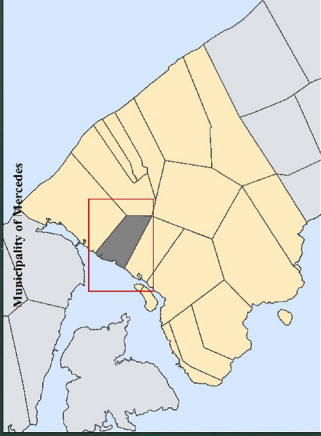


Multi-hazard Map San Roque

Mercedes, Eastern Samar



Legend

- Evacuation Route (Blue line)
- Residential (Yellow dots)
- Evacuation Route (Blue line)
- Barangay Boundary (White dashed line)
- Municipal Boundary (White solid line)
- Roads (Grey lines)
- Tsunami (READY Project) (Blue wavy lines)
- Tsunami Hazard (Blue wavy lines)

NOAH Multi-hazard*

- Low (Yellow)
- Medium (Orange)
- High (Red)

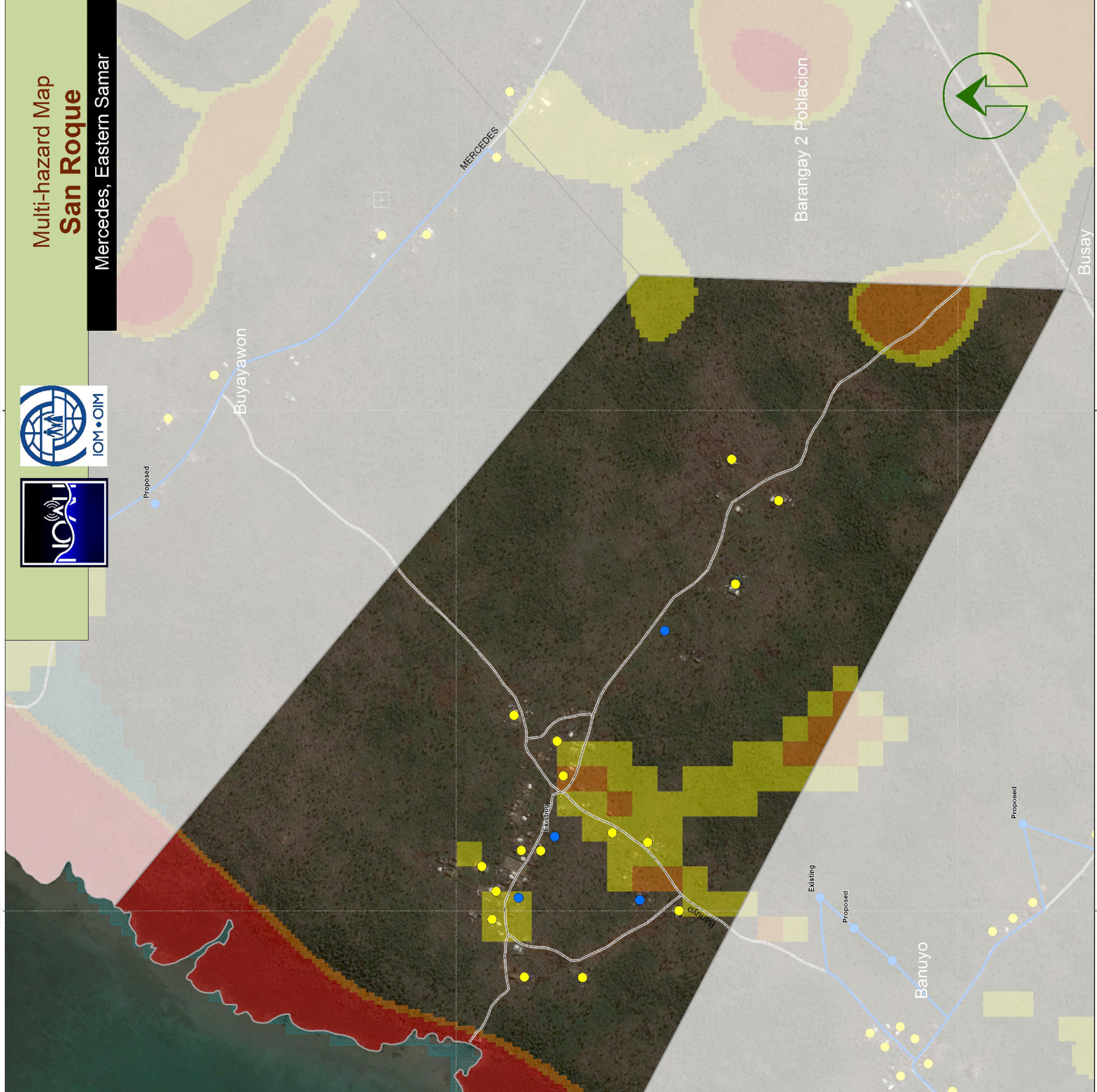
Liquefaction (READY Project)

- High Susceptibility (Green wavy lines)
- Moderate Susceptibility (Blue wavy lines)
- Low Susceptibility (Purple wavy lines)

NOAH Multi-hazard Map is composed of a combination of landslide, flood, and storm surge hazards maps. Landslide hazard map identifies areas that may be affected by landslides; floods were simulated at a 100-year rain return scenario; and storm surge simulation was based on maximum storm tide heights of 5 meters.

An NOAH Multi-hazard Map ay kombinasyon han landslide, flood, ngan storm surge hazard maps. Ha landslide hazard map, gumibbling an mga lugar nga posible maapektuhan han mga landslide, ha pagbabala, guingarin an 100-year rain return scenario ha pag-simulate; gumibashan ha storm surge simulation an storm tide height nga maabot ha 5 han-metro.

Data Sources:
 Nationwide Operational Assessment of Hazards
 National Mapping Resources and Information Authority



754600 754600 754600 754600 754600

1228600 1228600 1228600 1228600 1228600