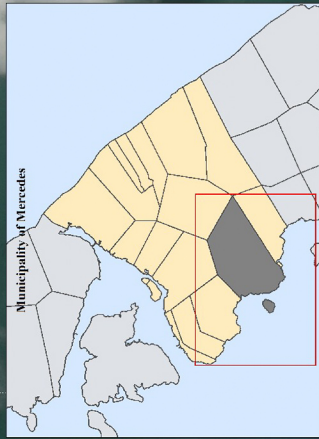
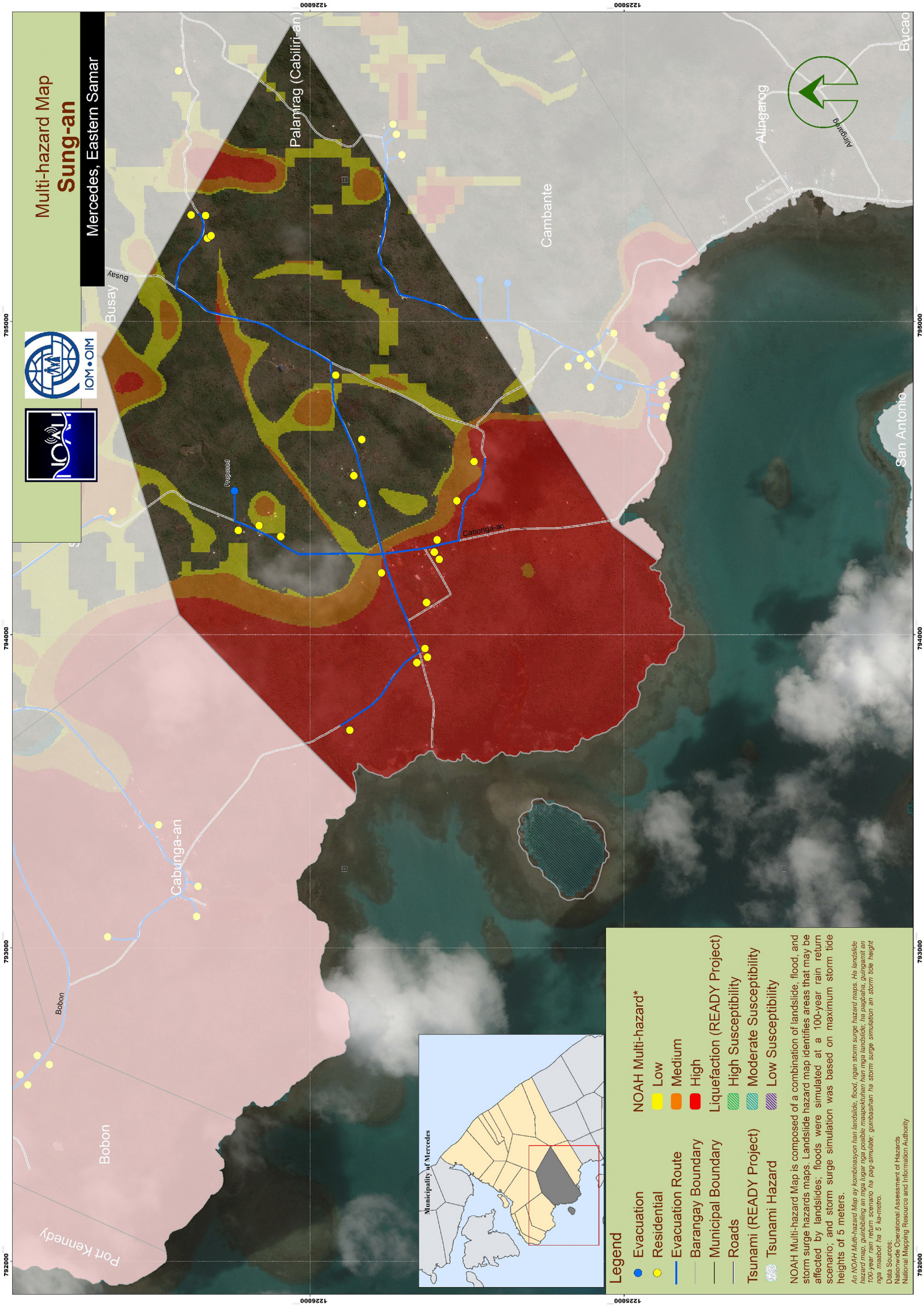


# Multi-hazard Map Sung-an

Mercedes, Eastern Samar



**Legend**

- Evacuation
- Residential
- Evacuation Route
- Barangay Boundary
- Municipal Boundary
- Roads

**NOAH Multi-hazard\***

- Low
- Medium
- High

**Liquefaction (READY Project)**

- High Susceptibility
- Moderate Susceptibility
- Low Susceptibility

**Tsunami (READY Project)**

- Tsunami Hazard

NOAH Multi-hazard Map is composed of a combination of landslide, flood, and storm surge hazards maps. Landslide hazard map identifies areas that may be affected by landslides; floods were simulated at a 100-year rain return scenario; and storm surge simulation was based on maximum storm tide heights of 5 meters.

*An NOAH Multi-hazard Map ay kombinasyon han landslide, flood, ngan storm surge hazard maps. Han landslide hazard map, gumibiling han mga lugar nga posible maapektuhan han mga landslide, ha pagbabala, guingant an 100-year rain return scenario ha pag-simulate; gumibashan ha storm surge simulation an storm tide height nga maabot ha 5 han metro.*

Data Sources:  
National Operational Assessment of Hazards  
National Mapping Resources and Information Authority

795000

794000

793000

792000

1225000

1225000

795000

794000

793000

792000

