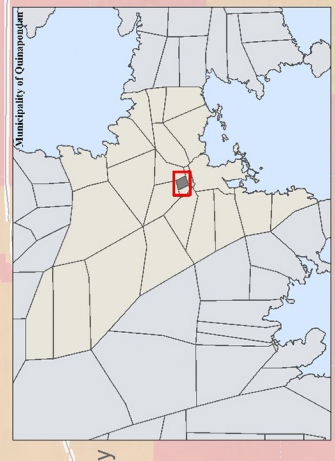
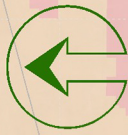
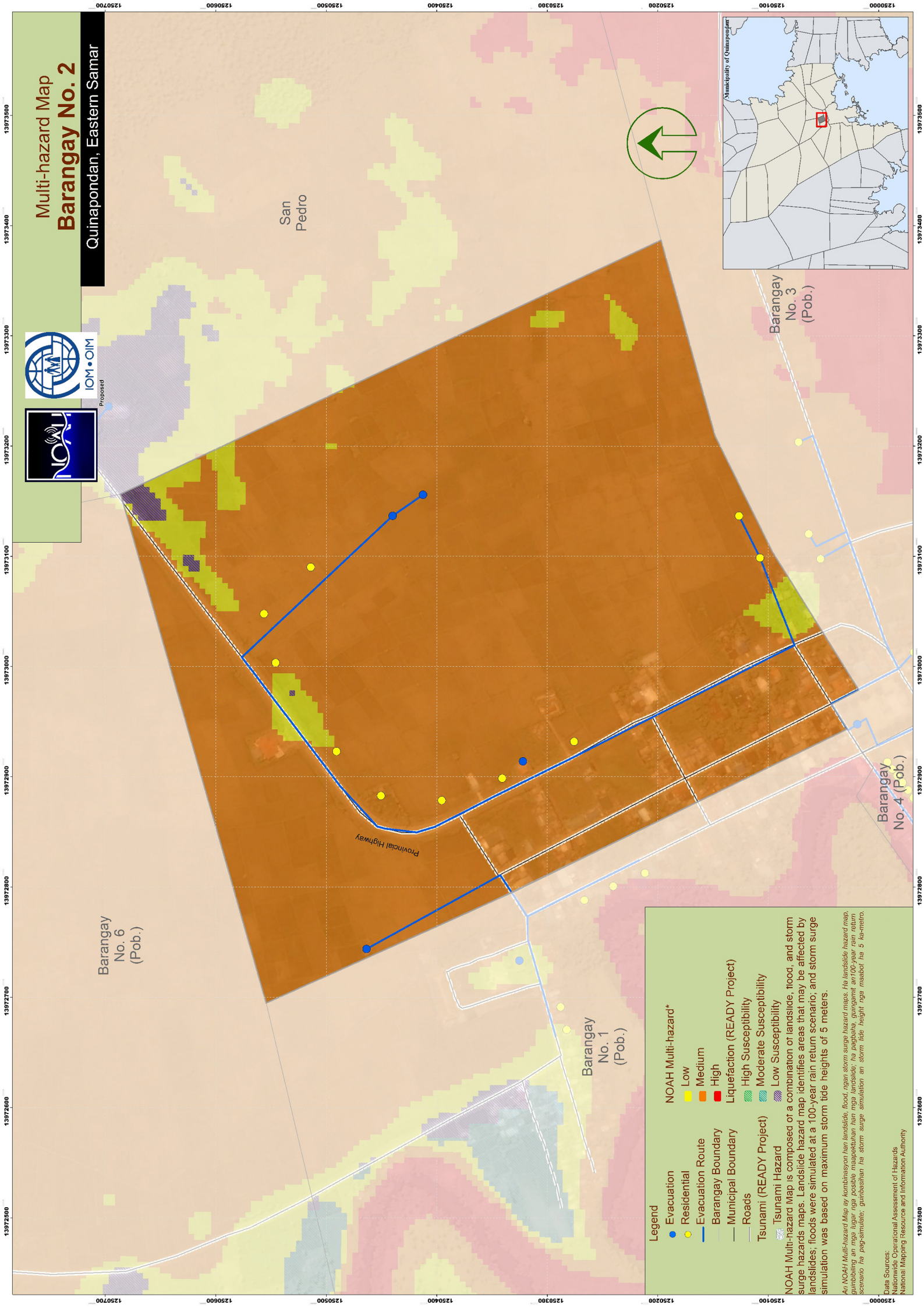


Multi-hazard Map Barangay No. 2

Quinapondan, Eastern Samar



Proposed



Legend

- Evacuation
 - Residential
 - Evacuation Route
- Barangay Boundary
- Municipal Boundary
- Roads
- Tsunami (READY Project)
- Tsunami Hazard
 - High Susceptibility
 - Moderate Susceptibility
 - Low Susceptibility
- NOAH Multi-hazard*
 - Low
 - Medium
 - High
- Liquefaction (READY Project)
 - High Susceptibility
 - Moderate Susceptibility
 - Low Susceptibility

NOAH Multi-hazard map is composed of a combination of landslide, flood, and storm surge hazards maps. Landslide hazard map identifies areas that may be affected by landslides; floods were simulated at a 100-year rain return scenario; and storm surge simulation was based on maximum storm tide heights of 5 meters.

An NOAH Multi-hazard Map ay kombinasyon han landslide, flood, ngan storm surge hazard maps. Ha landslide hazard map, gumibling an mga lugar nga posible magapokohan han mga landslide; ha pagbaha, gungamit an 100-year rain return scenario ha pag-simulate; gumbasthan ha storm surge simulation an storm tide height nga maabot ha 5 ka-metro.

Data Sources:
National Operational Assessment of Hazards
National Mapping Resource and Information Authority