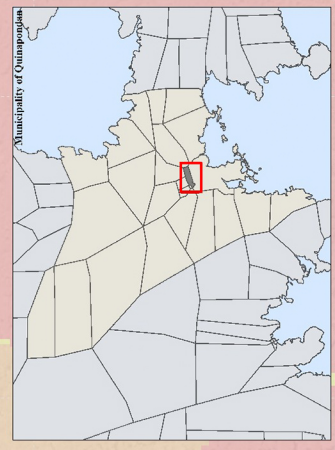
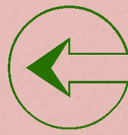
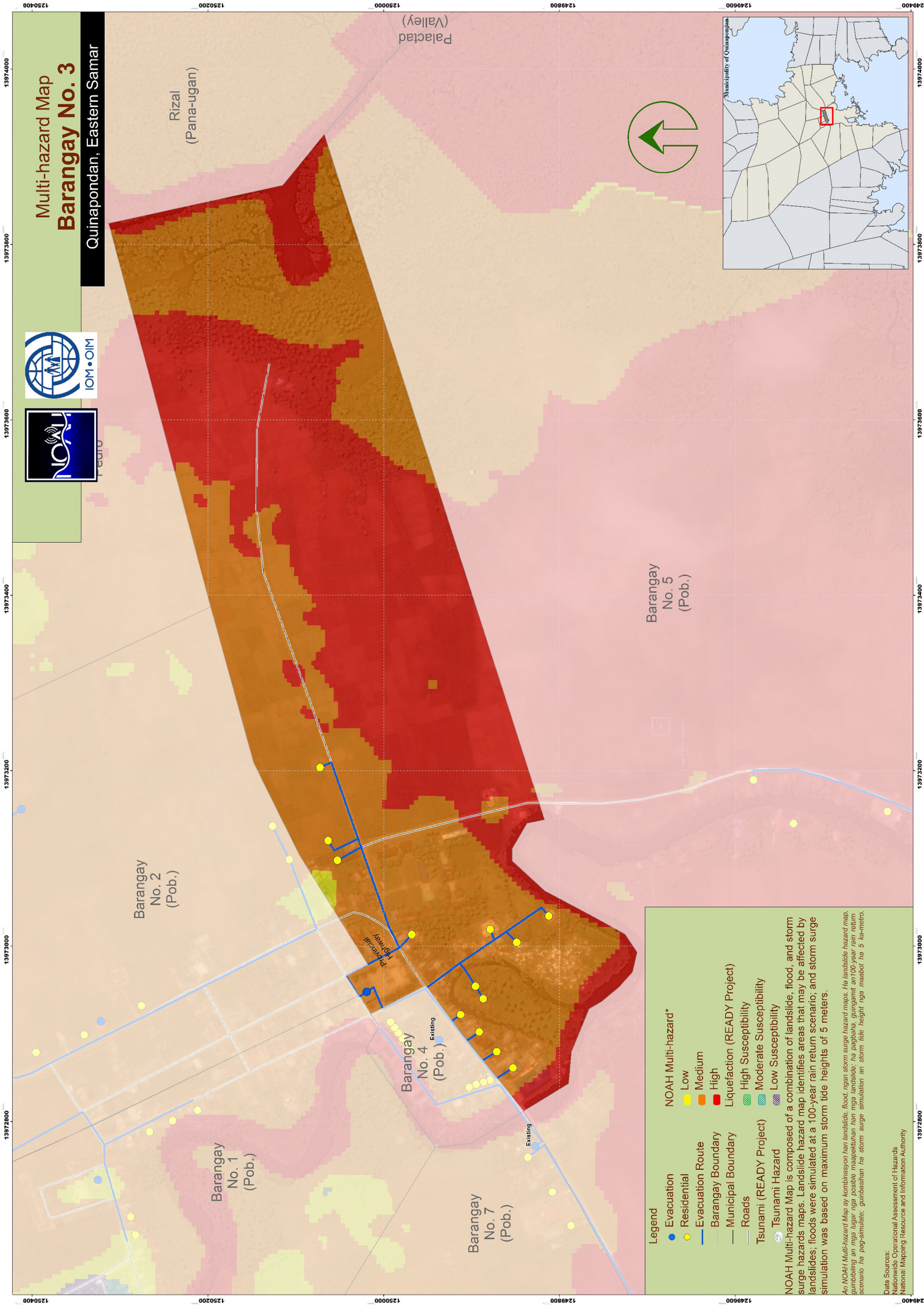


Multi-hazard Map Barangay No. 3

Quinapondan, Eastern Samar



Legend

- Evacuation (Blue line)
- Residential (Yellow dots)
- Evacuation Route (Blue line with yellow dots)
- Barangay Boundary (Blue outline)
- Municipal Boundary (Black outline)
- Roads (Grey line)
- Tsunami (READY Project) (Blue wavy line)
- Tsunami Hazard (Blue wavy line)

NOAH Multi-hazard*

- Low (Yellow)
- Medium (Orange)
- High (Red)

Liquefaction (READY Project)

- High Susceptibility (Green wavy line)
- Moderate Susceptibility (Blue wavy line)
- Low Susceptibility (Purple wavy line)

NOAH Multi-hazard Map is composed of a combination of landslide, flood, and storm surge hazards maps. Landslide hazard map identifies areas that may be affected by landslides; floods were simulated at a 100-year rain return scenario; and storm surge simulation was based on maximum storm tide heights of 5 meters.

An NOAH Multi-hazard Map by kombinasyon han landslide, flood, ngan storm surge hazard maps. Ha landslide hazard map, gumibling an mga lugar nga possible maapokahan han mga landslide; ha pagbaha, gungamit an 100-year rain return scenario ha pag-simulate; gumbastan ha storm surge simulation an storm tide height nga maabot ha 5 ka-metro.

Data Sources:
National Operational Assessment of Hazards
National Mapping Resource and Information Authority