

Multi-hazard Map Santa Margarita

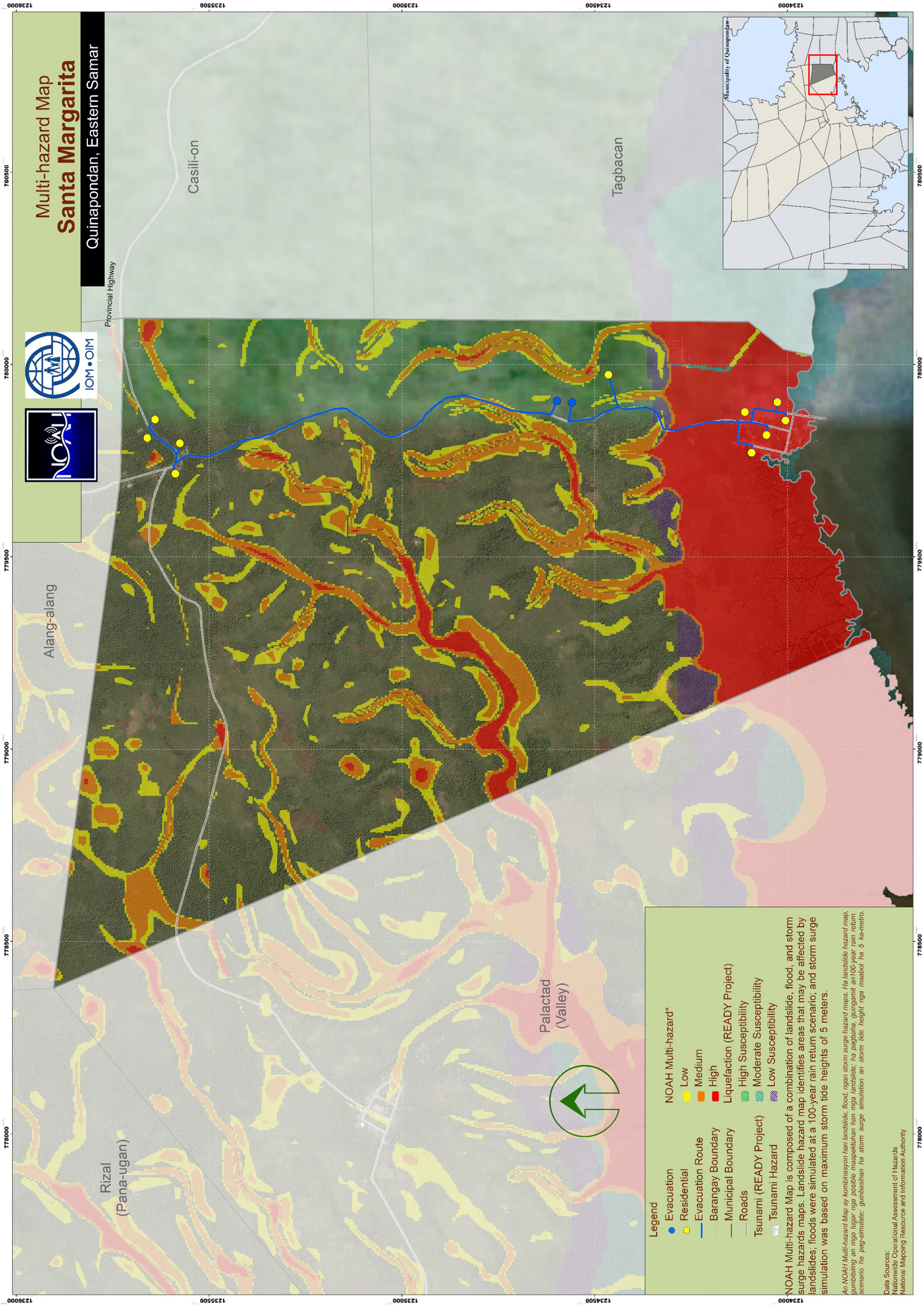
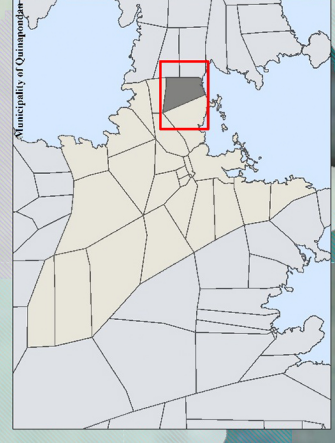
Quinapondan, Eastern Samar



Provincial Highway

Casili-on

Tagbacan



Alang-alang

Rizal
(Pana-ugan)

Palactad
(Valley)



Legend

- Evacuation
- Residential
- Evacuation Route
- Barangay Boundary
- Municipal Boundary
- Roads
- Tsunami (READY Project)
- Tsunami Hazard
- NOAH Multi-hazard*
 - Low
 - Medium
 - High
- Liquefaction (READY Project)
 - High Susceptibility
 - Moderate Susceptibility
 - Low Susceptibility

NOAH Multi-hazard Map is composed of a combination of landslide, flood, and storm surge hazards maps. Landslide hazard map identifies areas that may be affected by landslides; floods were simulated at a 100-year rain return scenario; and storm surge simulation was based on maximum storm tide heights of 5 meters.

An NOAH Multi-hazard Map ay kombinasyon han landslide, flood, ngan storm surge hazard maps. He landslide hazard map, gumibling an mga lugar nga posible magapokohan han mga landslides; ha pagbaha, gungamit an 100-year rain return scenario ha pag-simulate; gumbastan ha storm surge simulation an storm tide height nga maabot ha 5 ka-metro.

Data Sources:
 National Operational Assessment of Hazards
 National Mapping Resource and Information Authority