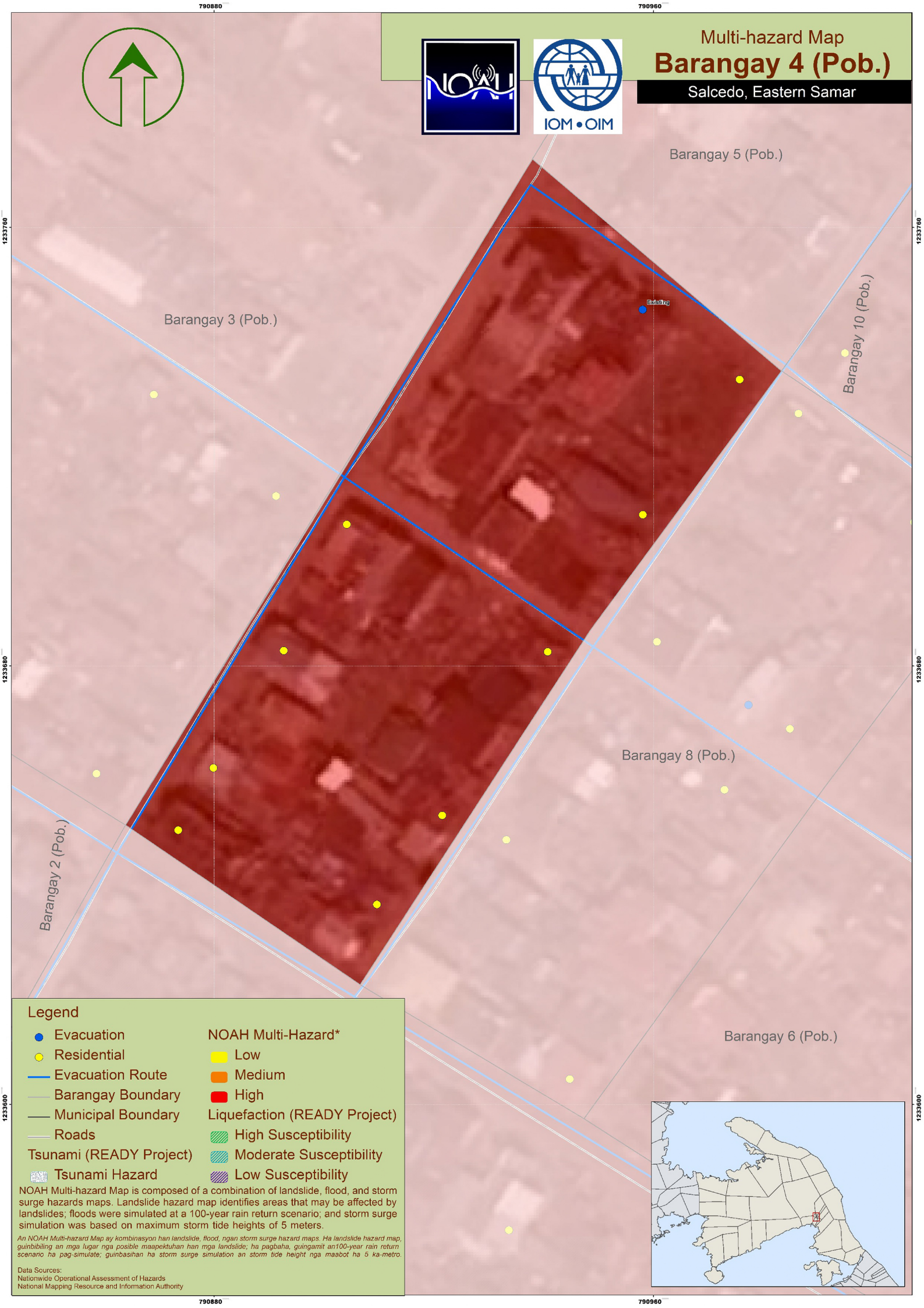




Multi-hazard Map  
**Barangay 4 (Pob.)**  
 Salcedo, Eastern Samar



**Legend**

- Evacuation
- Residential
- Evacuation Route
- Barangay Boundary
- Municipal Boundary
- Roads
- Tsunami (READY Project)
- Tsunami Hazard

**NOAH Multi-Hazard\***

- Low
- Medium
- High

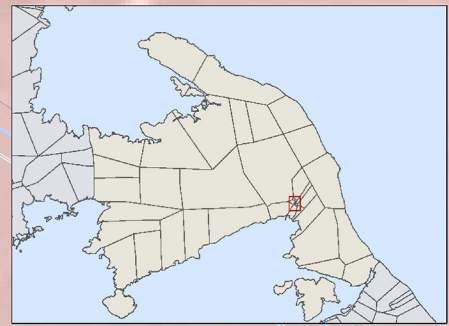
**Liquefaction (READY Project)**

- High Susceptibility
- Moderate Susceptibility
- Low Susceptibility

NOAH Multi-hazard Map is composed of a combination of landslide, flood, and storm surge hazards maps. Landslide hazard map identifies areas that may be affected by landslides; floods were simulated at a 100-year rain return scenario; and storm surge simulation was based on maximum storm tide heights of 5 meters.

*An NOAH Multi-hazard Map ay kombinasyon han landslide, flood, ngan storm surge hazard maps. Ha landslide hazard map, guinbibiling an mga lugar nga posible maapektuhan han mga landslide; ha pagbaha, guingamit an 100-year rain return scenario ha pag-simulate; guinbanshan ha storm surge simulation an storm tide height nga maabot ha 5 ka-metro.*

**Data Sources:**  
 Nationwide Operational Assessment of Hazards  
 National Mapping Resource and Information Authority



1233700  
1233680  
1233660  
1233640  
1233620  
1233600

1233700  
1233680  
1233660  
1233640  
1233620  
1233600

790880

790960

790880

790960