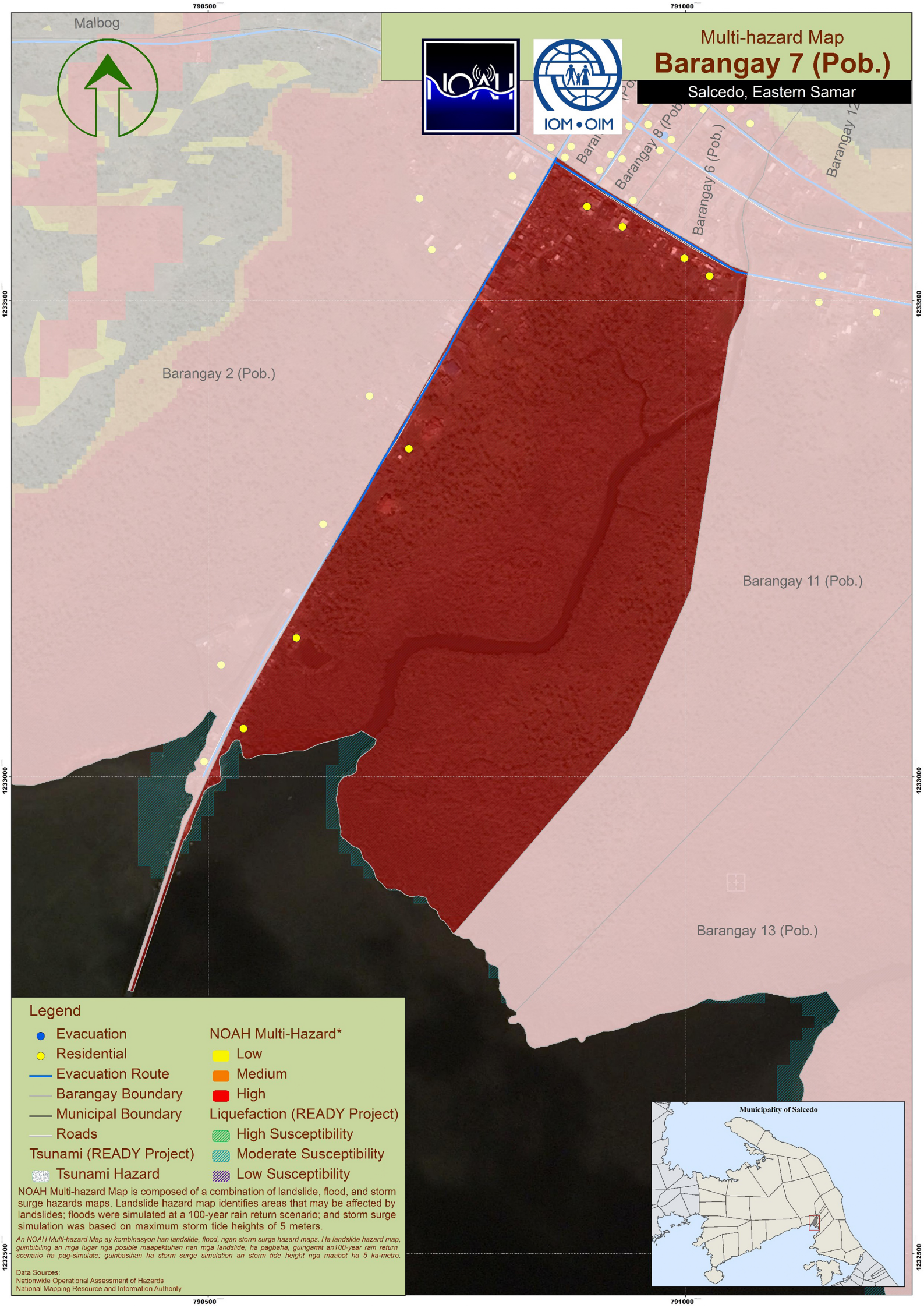
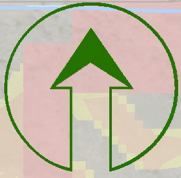


Multi-hazard Map Barangay 7 (Pob.)

Salcedo, Eastern Samar



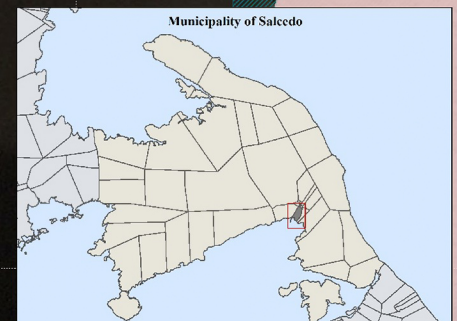
Legend

- Evacuation
- Residential
- Evacuation Route
- Barangay Boundary
- Municipal Boundary
- Roads
- Tsunami (READY Project)
- Tsunami Hazard
- NOAH Multi-Hazard* Low
- Medium
- High
- Liquefaction (READY Project) High Susceptibility
- Moderate Susceptibility
- Low Susceptibility

NOAH Multi-hazard Map is composed of a combination of landslide, flood, and storm surge hazards maps. Landslide hazard map identifies areas that may be affected by landslides; floods were simulated at a 100-year rain return scenario; and storm surge simulation was based on maximum storm tide heights of 5 meters.

An NOAH Multi-hazard Map ay kombinasyon han landslide, flood, ngan storm surge hazard maps. Ha landslide hazard map, gumbibiling an mga lugar nga posible maapektuhan han mga landslide, ha pagbaha, guingamit an 100-year rain return scenario ha pag-simulate; guinbasihan ha storm surge simulation an storm tide height nga maabot ha 5 ka-metro.

Data Sources:
Nationwide Operational Assessment of Hazards
National Mapping Resource and Information Authority



1233500

1233500

1233500

1233500

1233500

1233500