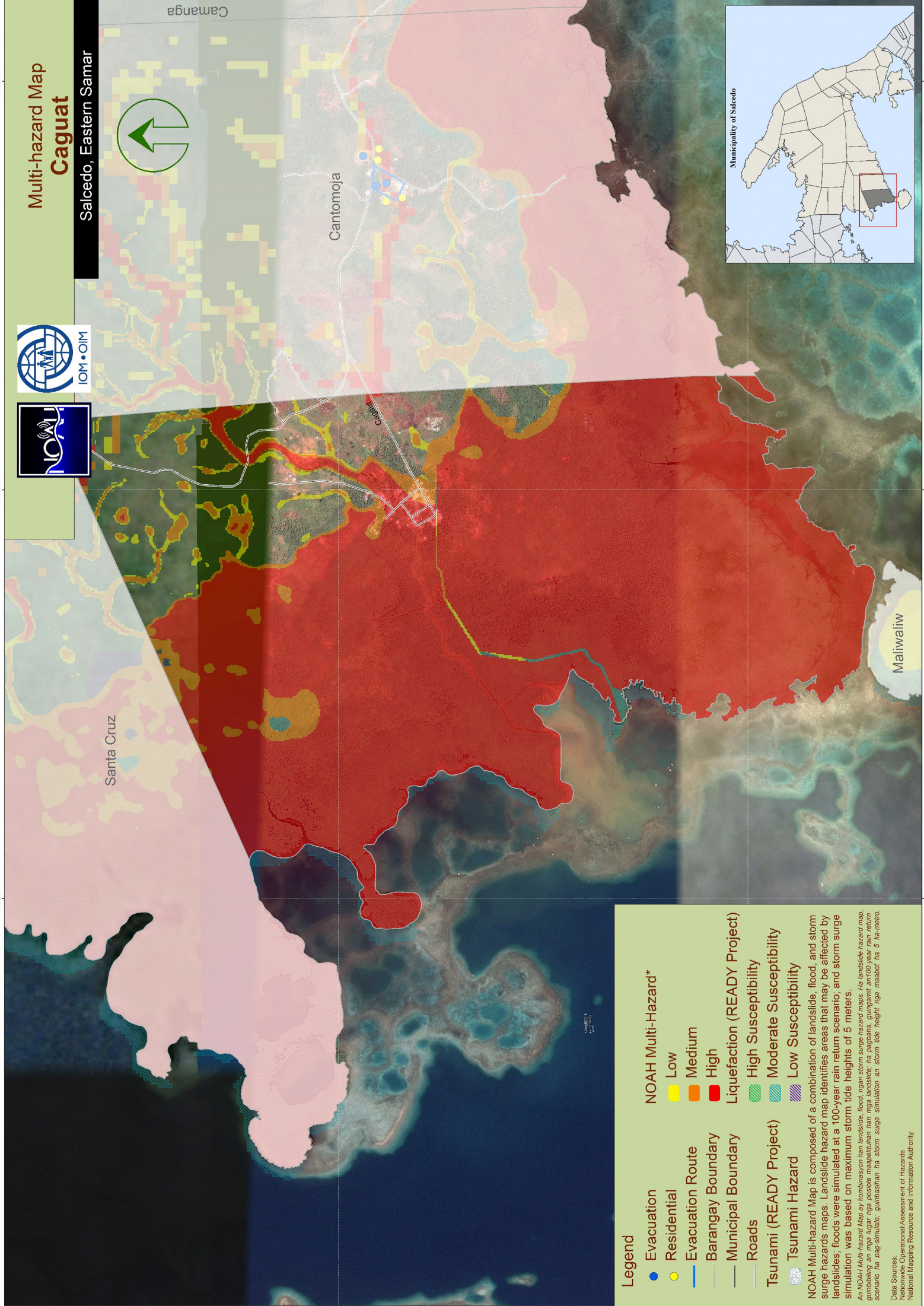
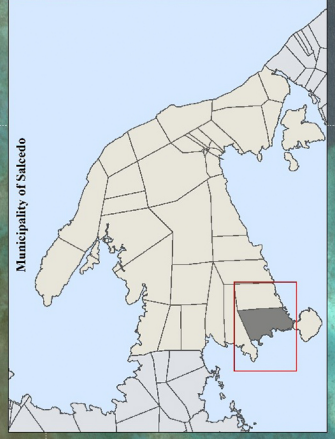


Multi-hazard Map Cagaut

Salcedo, Eastern Samar



Legend

- Evacuation (Blue dot)
- Residential (Yellow dot)
- Evacuation Route (Blue line)
- Barangay Boundary (Red line)
- Municipal Boundary (Black line)
- Roads (Grey line)
- Tsunami (READY Project) (Blue wavy line)
- Tsunami Hazard (Blue wavy line)

NOAH Multi-Hazard*

- Low (Yellow)
- Medium (Orange)
- High (Red)

Liquefaction (READY Project)

- High Susceptibility (Green wavy line)
- Moderate Susceptibility (Blue wavy line)
- Low Susceptibility (Purple wavy line)

NOAH Multi-hazard Map is composed of a combination of landslide, flood, and storm surge hazards maps. Landslide hazard map identifies areas that may be affected by landslides; floods were simulated at a 100-year rain return scenario; and storm surge simulation was based on maximum storm tide heights of 5 meters.

An NOAH Multi-hazard Map ay kombinasyon hin landslide, flood, ngan storm surge hazard maps. Hin landslide hazard map, gumabbing an mga lugar nga posible mapapalitan hin mga landslide; hin pagpapak, gumagamit an 100-year rain return scenario hin pag-simulate, gumabbing hin storm surge simulation an storm tide height nga tinabot hin 5 ha-metro.

Data Sources:
National Operational Assessment of Hazards
National Mapping Resource and Information Authority

780500

782000

783500

1231000

Camanga

Cantomjo

Cagaut

Santa Cruz

Maiwaliw

1239500

780500

782000

783500