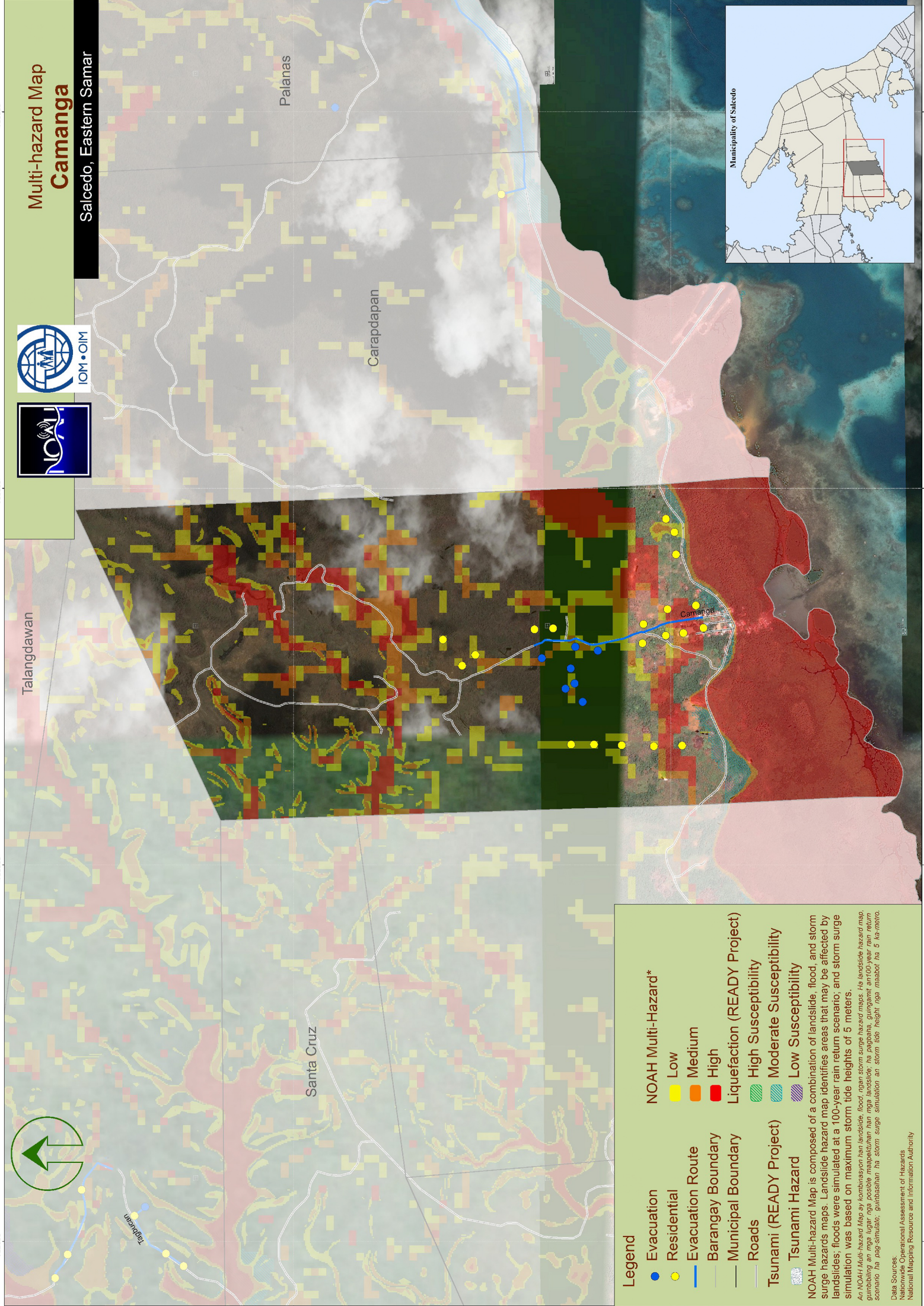
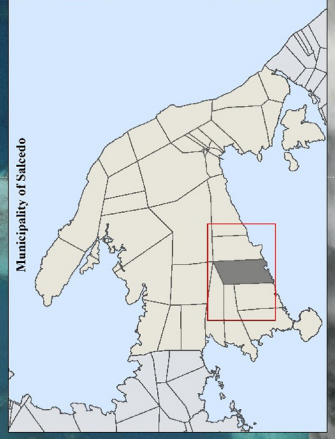


# Multi-hazard Map Camanga

Salcedo, Eastern Samar



**Legend**

- Evacuation
- Residential
- Evacuation Route
- Barangay Boundary
- Municipal Boundary
- Roads
- Tsunami (READY Project)
- Tsunami Hazard

**NOAH Multi-Hazard\***

- Low
- Medium
- High

**Liquefaction (READY Project)**

- High Susceptibility
- Moderate Susceptibility
- Low Susceptibility

**NOAH Multi-Hazard Map** is composed of a combination of landslide, flood, and storm surge hazards maps. Landslide hazard map identifies areas that may be affected by landslides; floods were simulated at a 100-year rain return scenario; and storm surge simulation was based on maximum storm tide heights of 5 meters.

*An NOAH Multi-hazard Map ay kombinasyon hin landslide, flood, ngan storm surge hazard maps. He landslide hazard map, gumabang an mga lugar nga possible mapabuhanan hin mga landslide; na pagpangana, gungamt an 100-year rain return scenario na pag-simulate, gumabang hin storm surge simulation an storm tide height nga maabot na 5 na metro.*

**Data Sources:**  
 National Operational Assessment of Hazards  
 National Mapping Resource and Information Authority

782000 783500 785000 786500

1231000 1232500 1234000 1235500