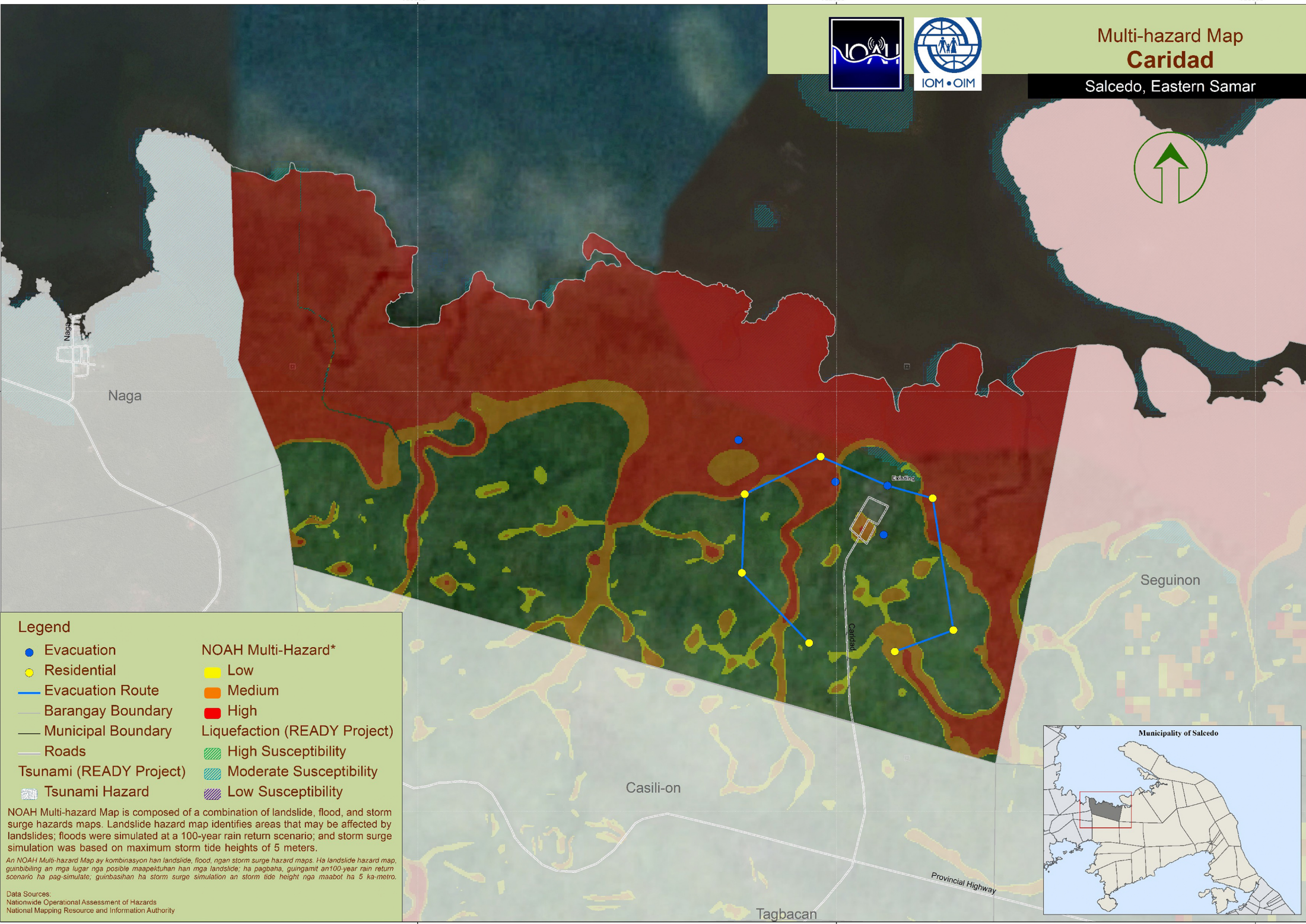




Multi-hazard Map
Caridad
 Salcedo, Eastern Samar

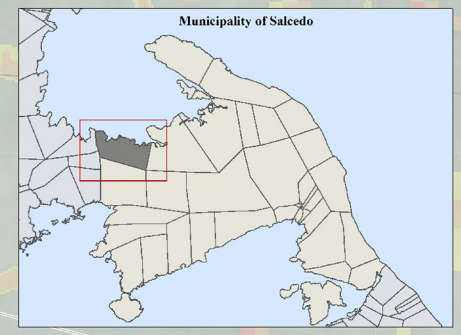


- Legend**
- Evacuation
 - Residential
 - Evacuation Route
 - Barangay Boundary
 - Municipal Boundary
 - Roads
 - Tsunami (READY Project)
 - Tsunami Hazard
- NOAH Multi-Hazard***
- Low
 - Medium
 - High
- Liquefaction (READY Project)**
- ▨ High Susceptibility
 - ▨ Moderate Susceptibility
 - ▨ Low Susceptibility

NOAH Multi-hazard Map is composed of a combination of landslide, flood, and storm surge hazards maps. Landslide hazard map identifies areas that may be affected by landslides; floods were simulated at a 100-year rain return scenario; and storm surge simulation was based on maximum storm tide heights of 5 meters.

An NOAH Multi-hazard Map ay kombinasyon han landslide, flood, ngan storm surge hazard maps. Ha landslide hazard map, gumbibiling an mga lugar nga posible maapektuhan han mga landslide; ha pagbaha, guingamit an 100-year rain return scenario ha pag-simulate, guinbasihan ha storm surge simulation an storm tide height nga maabot ha 5 ka-metro.

Data Sources:
 Nationwide Operational Assessment of Hazards
 National Mapping Resource and Information Authority



1237000
1235500

1237000
1235500

780500

782000

783500

780500

782000

783500