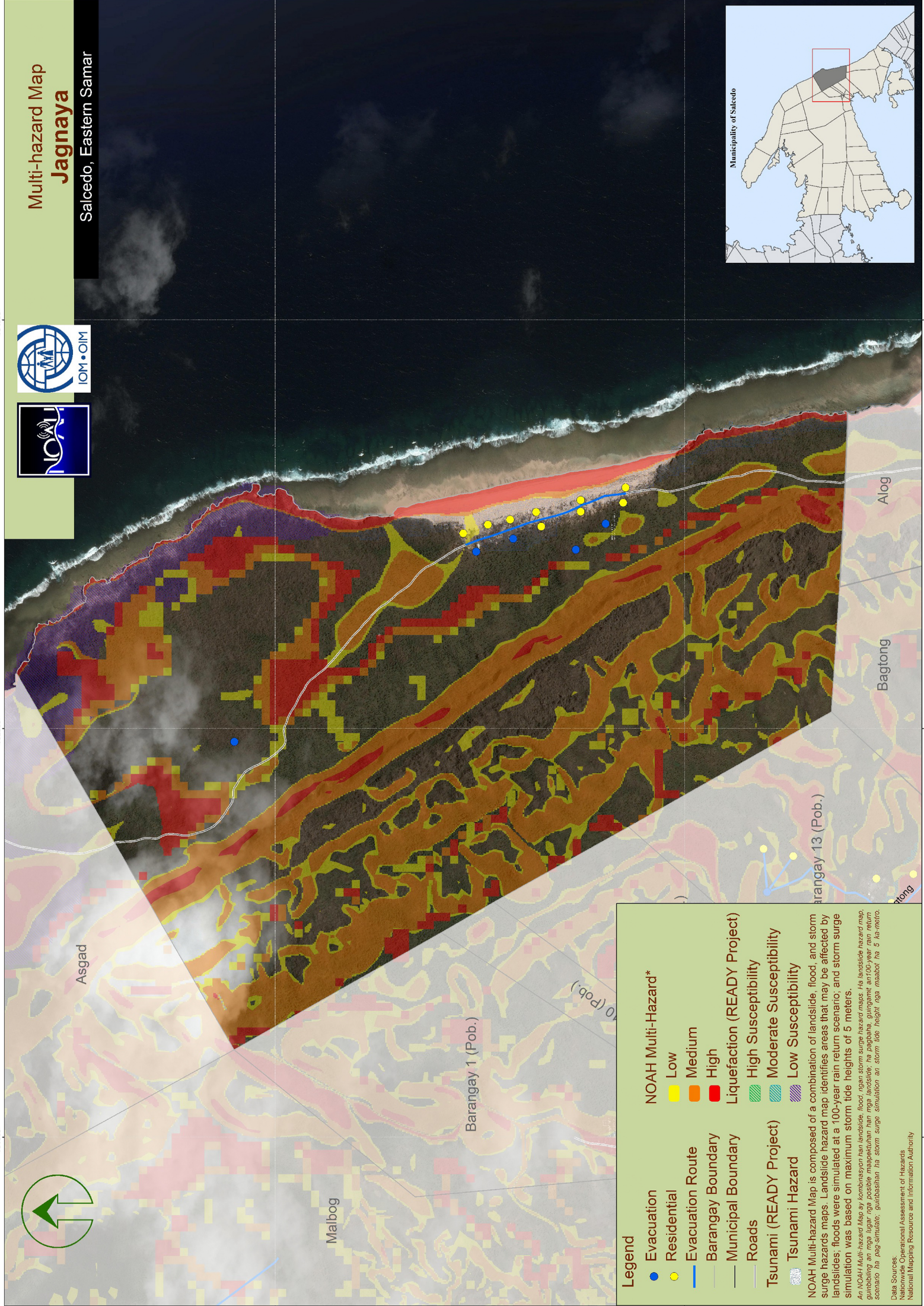
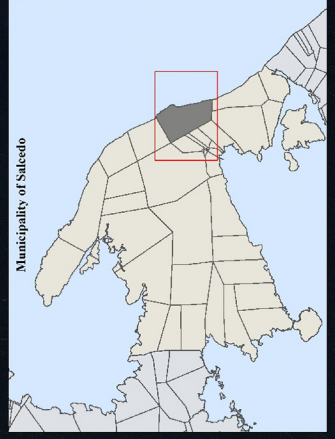


Multi-hazard Map Jagnaya

Salcedo, Eastern Samar



Legend

- Evacuation (Blue line)
- Residential (Yellow)
- Evacuation Route (Blue line)
- Barangay Boundary (Grey line)
- Municipal Boundary (Black line)
- Roads (Grey line)
- Tsunami (READY Project) (Blue wavy line)
- Tsunami Hazard (Blue wavy line)

NOAH Multi-Hazard*

- Low (Yellow)
- Medium (Orange)
- High (Red)

Liquefaction (READY Project)

- High Susceptibility (Green wavy line)
- Moderate Susceptibility (Blue wavy line)
- Low Susceptibility (Purple wavy line)

NOAH Multi-hazard Map is composed of a combination of landslide, flood, and storm surge hazards maps. Landslide hazard map identifies areas that may be affected by landslides; floods were simulated at a 100-year rain return scenario; and storm surge simulation was based on maximum storm tide heights of 5 meters.

An NOAH Multi-hazard Mapa ay kombinasyon ng landslide, flood, ngan storm surge hazard maps. Ha landslide hazard map, gumamit ng mga lugar nga posible magapetukan han mga landslide, ha pagbaha, gumagamit an 100-year rain return scenario ha pag-simulate, gumagamit ha storm surge simulation an storm tide height nga maabot ha 5 ha metro.

Data Sources:
 National Operational Assessment of Hazards
 National Mapping Resource and Information Authority