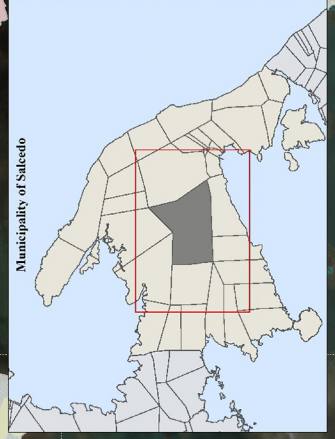
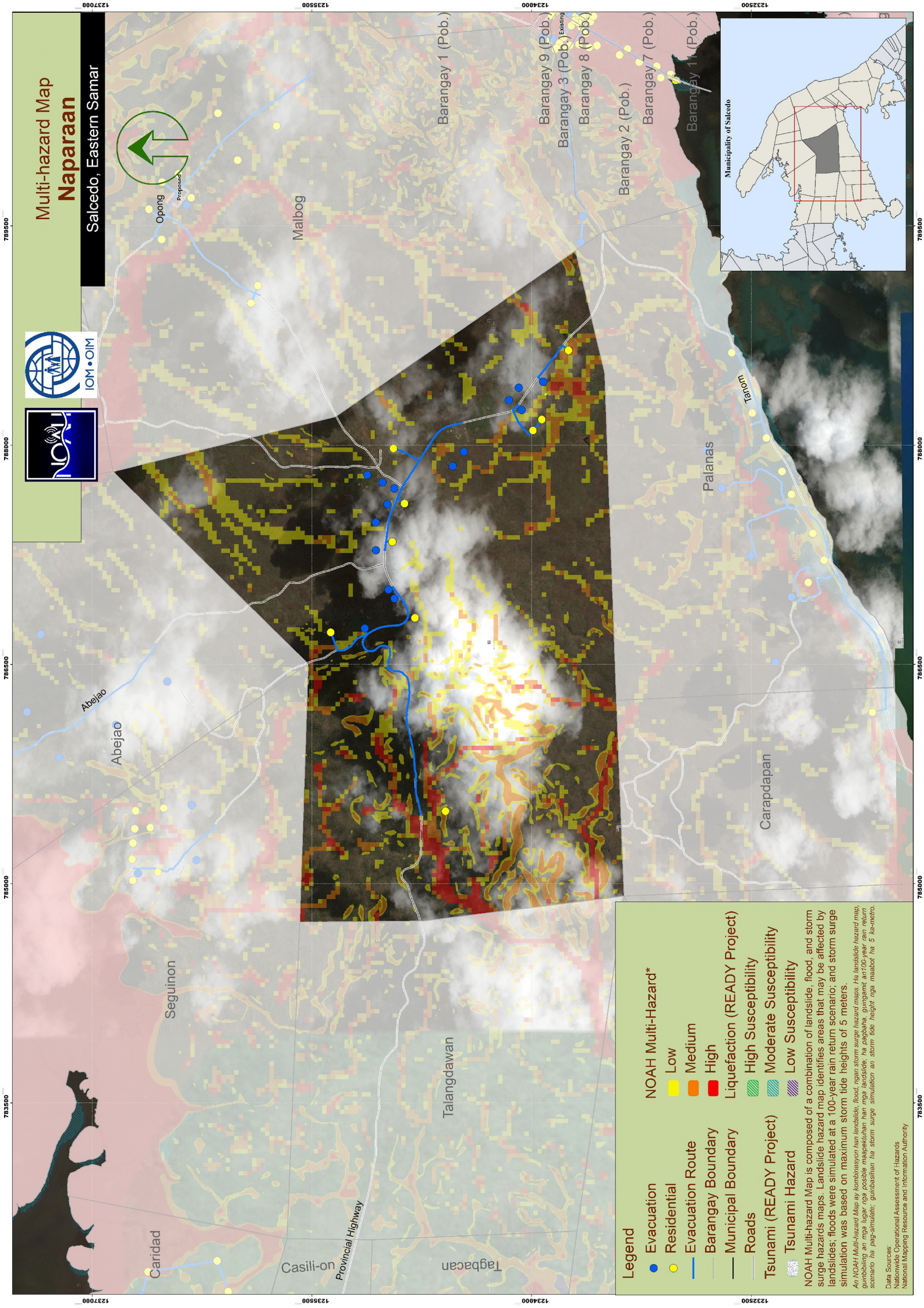


Multi-hazard Map Naparaan

Salcedo, Eastern Samar



Legend

- Evacuation
- Residential
- Evacuation Route
- Barangay Boundary
- Municipal Boundary
- Roads
- Tsunami (READY Project)
- Tsunami Hazard

NOAH Multi-Hazard*

- Low
- Medium
- High

Liquefaction (READY Project)

- High Susceptibility
- Moderate Susceptibility
- Low Susceptibility

NOAH Multi-Hazard Map is composed of a combination of landslide, flood, and storm surge hazards maps. Landslide hazard map identifies areas that may be affected by landslides; floods were simulated at a 100-year rain return scenario; and storm surge simulation was based on maximum storm tide heights of 5 meters.

An NOAH Multi-hazard Map ay kombinasyon han landslide, flood, ngan storm surge hazard maps. Ha landslide hazard map, gumibbing an mga lugar nga possible maapekutan han mga landslide, ha pagbeha, gungamit an 100-year rain return scenario ha pag-simulate; ginhahiran ha storm surge simulation an storm tide height nga maabot ha 5 kamento.

Data Sources:
National Operational Assessment of Hazards
National Mapping, Resource and Information Authority

789500 788000 786500 785000 783500

1237000 1235000 1234000 1232500