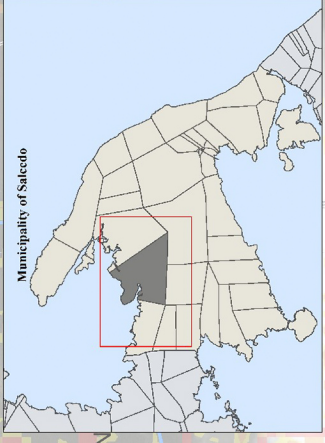
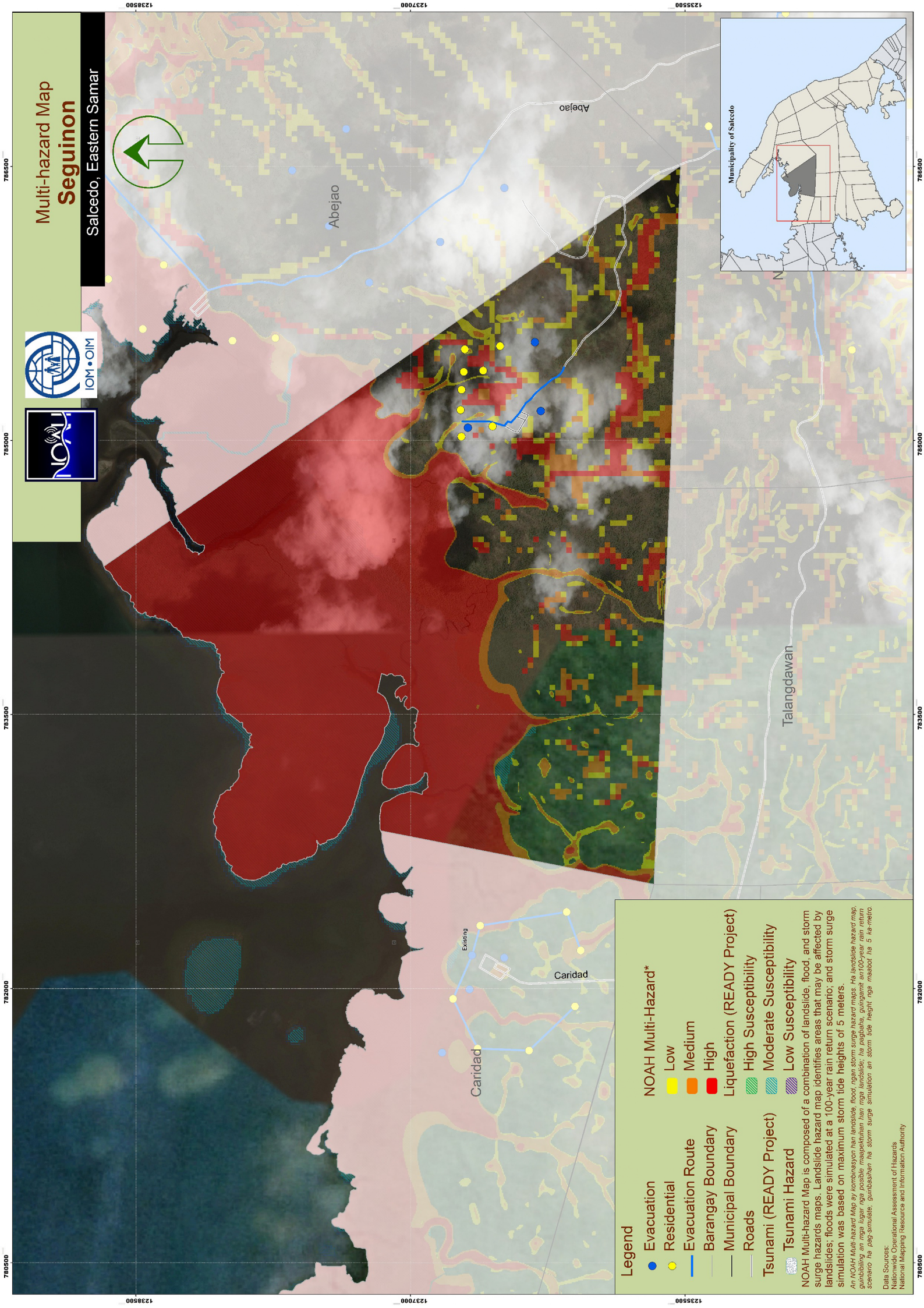


# Multi-hazard Map Seguinon

Salcedo, Eastern Samar



### Legend

- Evacuation
- Residential
- Evacuation Route
- Barangay Boundary
- Municipal Boundary
- Roads
- Tsunami (READY Project)
- Tsunami Hazard
- NOAH Multi-Hazard\*
  - Low
  - Medium
  - High
- Liquefaction (READY Project)
  - High Susceptibility
  - Moderate Susceptibility
  - Low Susceptibility

NOAH Multi-hazard Map is composed of a combination of landslide, flood, and storm surge hazards maps. Landslide hazard map identifies areas that may be affected by landslides; floods were simulated at a 100-year rain return scenario; and storm surge simulation was based on maximum storm tide heights of 5 meters.

An NOAA Multi-hazard Map ay kombinasyon han landslide, flood, ngen storm surge hazard maps. Ha landslide hazard map, gungbiling an mga lugar nga posible maapektuhan han mga landslide; ha pagbabina, gungbiling an 100-year rain return scenario ha pag-simulate, gungbiling an storm surge simulation an storm tide height, nga mababot ha 5 ha-metro.

Data Sources:  
 National Operational Assessment of Hazards  
 National Mapping Resource and Information Authority

760500 761000 761500 762000 762500 763000 763500 764000 764500 765000 765500 766000 766500 767000 767500 768000 768500 769000 769500 770000 770500 771000 771500 772000 772500 773000 773500 774000 774500 775000 775500 776000 776500 777000 777500 778000 778500 779000 779500 780000 780500 781000 781500 782000 782500 783000 783500 784000 784500 785000 785500 786000 786500 787000 787500 788000 788500 789000 789500 790000 790500 791000 791500 792000 792500 793000 793500 794000 794500 795000 795500 796000 796500 797000 797500 798000 798500 799000 799500 800000