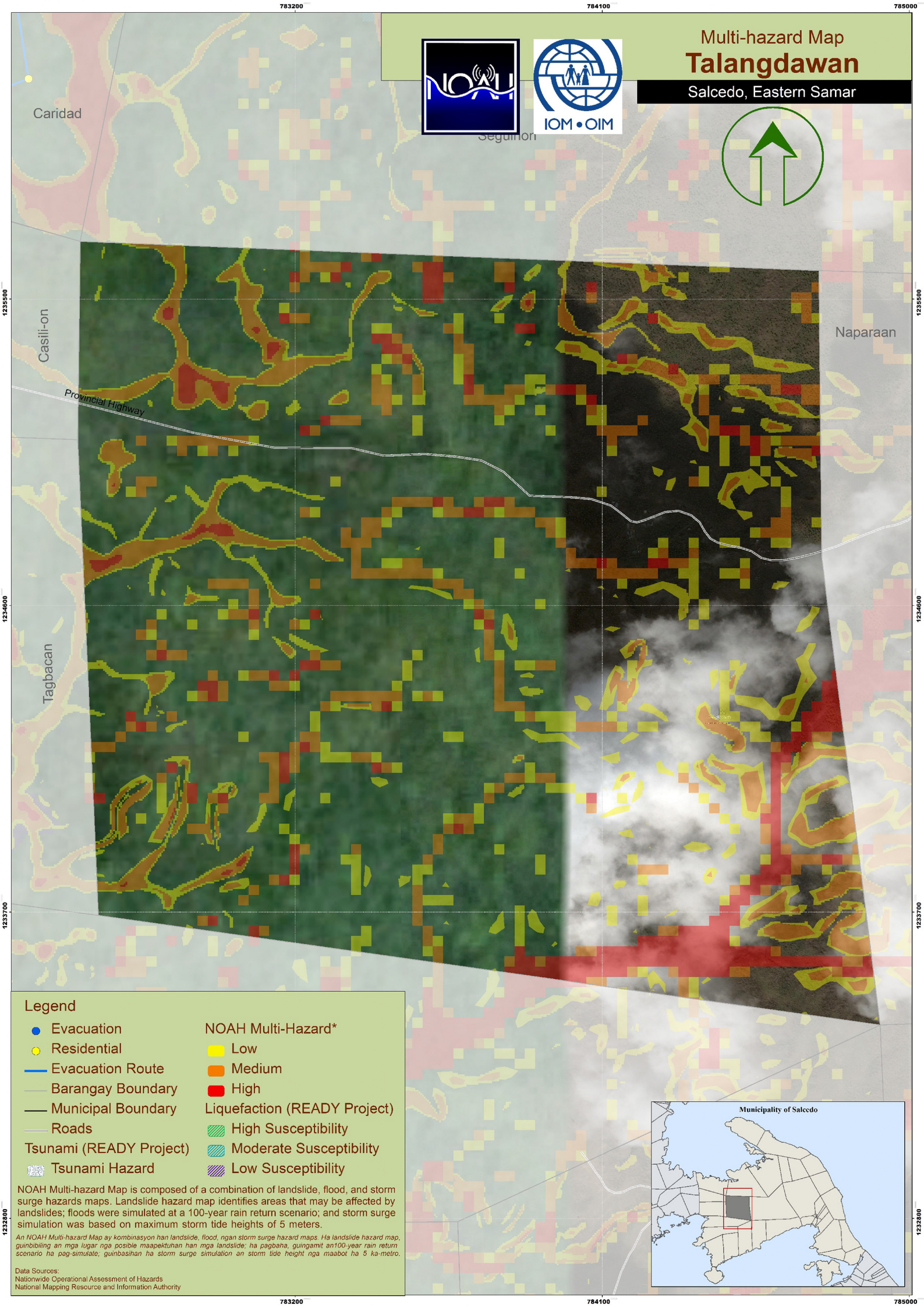


Multi-hazard Map Talangdawan

Salcedo, Eastern Samar



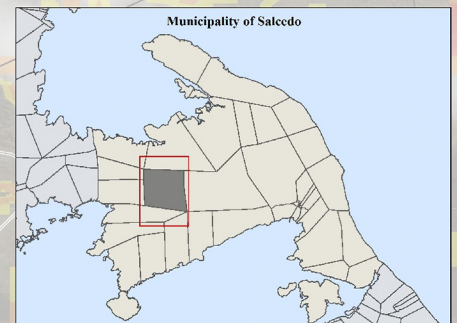
Legend

- | | |
|-------------------------|-------------------------------------|
| Evacuation | NOAH Multi-Hazard* |
| Residential | Low |
| Evacuation Route | Medium |
| Barangay Boundary | High |
| Municipal Boundary | Liquefaction (READY Project) |
| Roads | High Susceptibility |
| Tsunami (READY Project) | Moderate Susceptibility |
| Tsunami Hazard | Low Susceptibility |

NOAH Multi-hazard Map is composed of a combination of landslide, flood, and storm surge hazards maps. Landslide hazard map identifies areas that may be affected by landslides; floods were simulated at a 100-year rain return scenario; and storm surge simulation was based on maximum storm tide heights of 5 meters.

An NOAH Multi-hazard Map ay kombinasyon han landslide, flood, ngan storm surge hazard maps. Ha landslide hazard map, guinbibiling an mga lugar nga posible maapektuhan han mga landslide; ha pagbaha, guingamit an 100-year rain return scenario ha pag-simulate; guinbasthan ha storm surge simulation an storm tide height nga maabot ha 5 ka-metro.

Data Sources:
 Nationwide Operational Assessment of Hazards
 National Mapping Resource and Information Authority



1233700

1232800

1232800

1233700

1232800

1232800